

21700000

3-Point Pole Mounting and Downtilt Mounting Bracket Kit

General Specifications

Mount Type	3-point standard pole or downtilt mounting for log periodic and panel antennas	
Included in Kit	One (1) top mount assembly; one (1) middle mount assembly one (1) bottom mount assembly; two (2) lock-down braces	
Package Quantity	One (1) set	

Mechanical Specifications

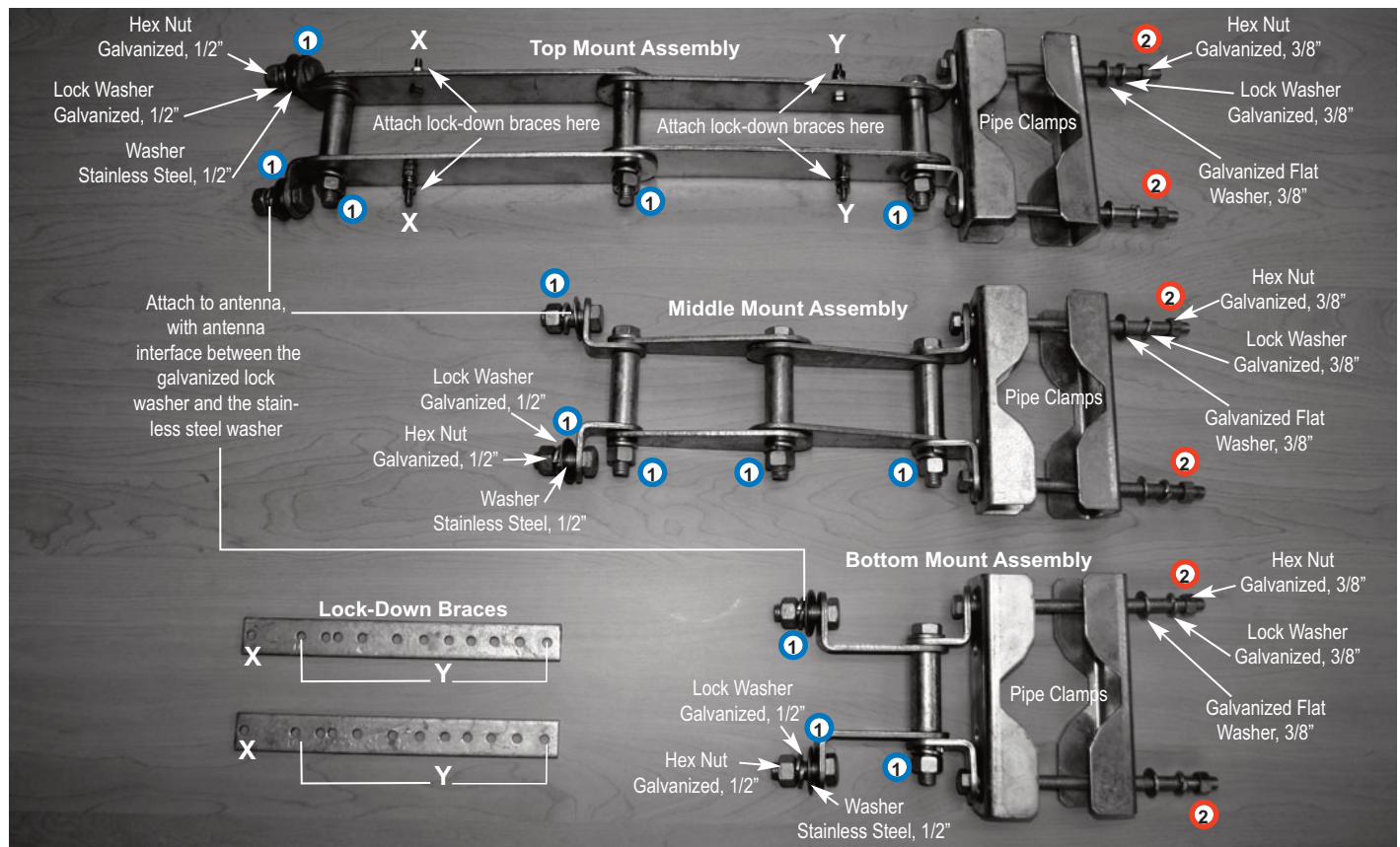
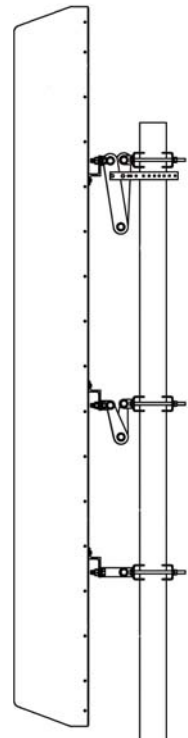
Fits Pipe Diameter	If the lock-down brace is not used: 50-102 mm (2.0-4.0 in) If the lock-down brace is used: 50-88.9 mm (2.0-3.5 in)
Weight	8.2 kg (18 lbs)
Color / Material	Silver / Galvanized steel
Torque	All 1/2" fasteners marked with this symbol 1 must be torqued to a minimum of 55 ft lbs and a maximum of 60 ft lbs. All 3/8" fasteners marked with this symbol 2 must be torqued to 11 ft lbs.

Instructions

Attach the top mount assembly, the middle mount assembly and the bottom mount assembly to the antenna, positioning the antenna interface between the galvanized lock washers and the stainless steel washers (6 connection points).

Using the hardware provided, secure each lock-down brace to the top mount assembly at point **X** (indicated below). Open the downtilt bracket to the desired mechanical tilt and secure each of the lock-down braces at point **Y** (0° is marked on the lock-down brace).

Attach antenna and bracket system to pole using pipe clamps. Secure all fasteners. Torque all 1/2" fasteners (marked with the symbol **1**) to a minimum of 55 ft lbs and a maximum of 60 ft lbs. Torque all 3/8" fasteners (marked with the symbol **2**) to 11 ft lbs.



Improvements to product may be made without notice.