

## About Antenna Line Device Control Software

The Antenna Line Device Control (ALDC) system contains a portable primary controller (PCU-4), and software used for configuration and control of AISG version 1.1 and/or version 2.0 devices at a cell site. The antenna drivers and ALDC software are installed on the user's computer.

This system is an upgrade to Amphenol Antenna Solutions PCU-2 system that controlled only AISG version 1.1 devices.

## ALDC Software Installation Setup

Setting up the ALDC software involves three steps: downloading, extracting, and then installing.

### Setup Preparation

Make sure prior to setup that the ALDC system you received includes the following:

- Portable Control Unit (PCU-4)
- USB Data Cable
- AISG Control Cable
- 24V Power Supply
- ALDC software v2.0 for Microsoft Windows. The best way to obtain the latest software is to download it from the Amphenol Antennas Web site.

**NOTE** Before installing RET antennas, Amphenol Antenna Solutions strongly suggests connecting each actuator to the controller (PCU-4, Node B, or other antenna vendor controller) and testing the connection on the ground. Doing so will ensure that each antenna is in working order *prior* to climbing the tower, which might prevent reascending the tower.

### IMPORTANT!

The PCU-4 USB Cable **MUST** be disconnected from the computer's USB port during the software installation process. If the USB cable is connected to the computer, the USB-RS485 drivers will **NOT** load properly and programming the RET will not be possible.



# Downloading ALDC Software

## Download from the Internet

1. On the control computer, open a Web browser (Internet Explorer recommended) and go to the Amphenol Antenna Web site (<http://www.amphenol-antennas.com>). The Web browser screen displays the Amphenol Antennas home page.
2. Select **Products**—>**RET Control Systems**—>**RET System Software Downloads** from the Products pull-down selection list. The Web browser opens the RET System Software Downloads page.
3. The RET System Software Downloads page displays links to software files that can be downloaded. Click on the link **SmartTilt Antenna Line Device Control (ALDC) Software for PCU-KIT-4-xx**.
4. This opens a file download prompt. Click the **Save** button.

**NOTE** Windows 7 (4a) and Windows XP (4b) download prompts are slightly different in appearance.

5. Select your PC desktop as the target download location. The screen will display the download status, and when completed the file **ALDCv2-0d-.zip** is on your computer.
6. When the download is complete, click on the **Open** button.

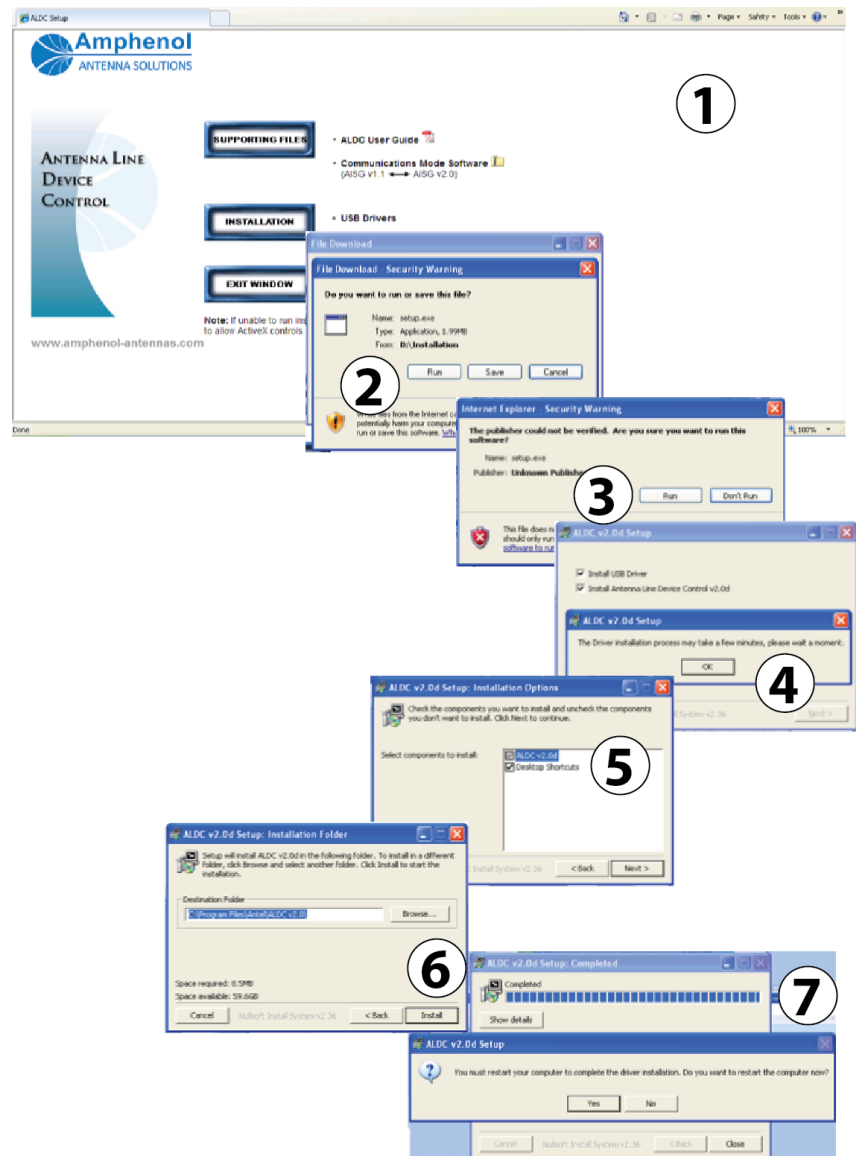


## Download from CD

Not all users have the CD; if you are missing the CD skip this section. Instead refer to “Downloading ALDC Software from the Internet (Windows XP)” or “Downloading ALDC Software from the Internet (Windows 7)”, determining which operating system you are using.

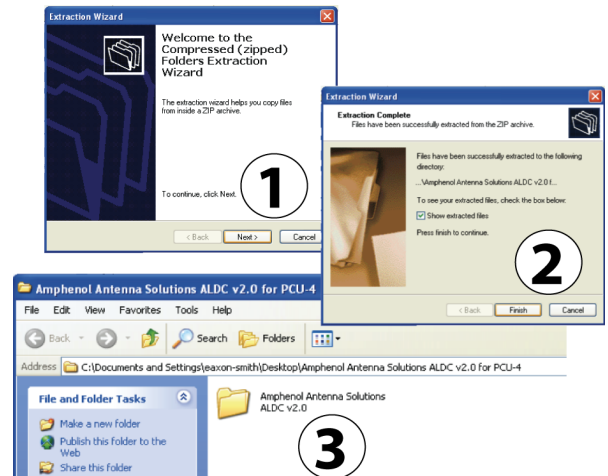
1. Insert the ALDC software CD in the computer and double-click on the ALDC Setup icon. Your Web browser displays the ALDC Setup home screen.  
  
Click on the [Installation] button.
2. Click the [Run] button to start the download. Click [Run] to confirm the download when the security warning dialog is displayed.
3. Click the [Run] button to verify the download publisher.
4. The ALDC v2.0d Setup window is displayed. Make sure that the checkboxes for “Install USB Driver” and “Install Antenna Line Device Control v2.0d” are checked and then click the [Next] button.
5. Make sure “ALDC v2.0d” is highlighted in blue and then click [Next] button to begin downloading the file.
6. Select the installation folder and then click the [Install] button.
7. The screen displays the download progress window. **DO NOT** click the [Close] button on this window because that will stop the program download.

When the download is complete the message window displays “Completed” above the blue bar line. Click the [Yes] button to restart your computer and finish the installation.



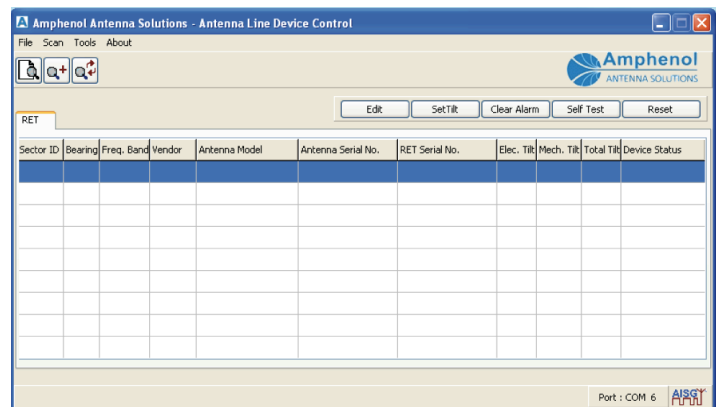
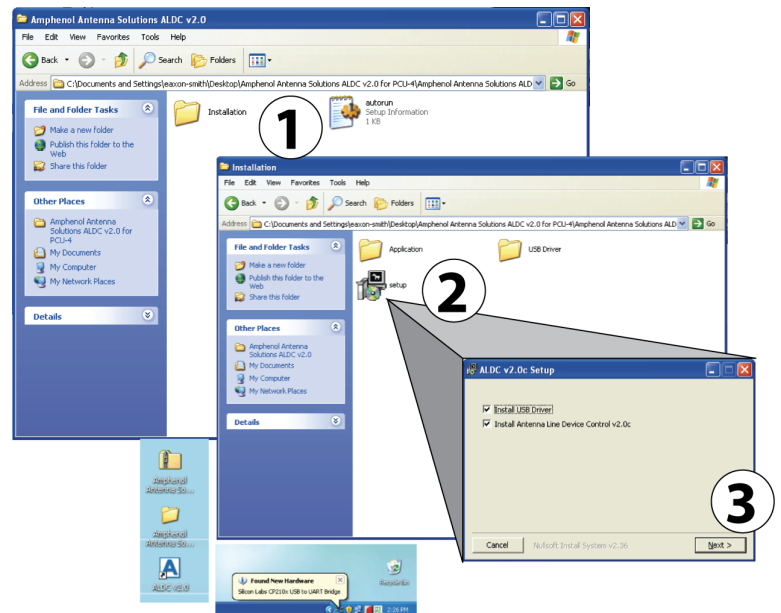
# Extracting ALDC Software

1. Click on the file **Amphenol Antenna Solutions ALDC 2.0 for PCU-4.zip**. The screen displays the Extraction Wizard tool. Click the **Next** button to extract the files.
2. Click the **Finish** button. All of the files you need to install the ALDC software have been extracted into the target directory on your PC.
3. The target directory displays the folder **Antenna Line Device Control Software (ALDC) v2.0 for PCU-4**.



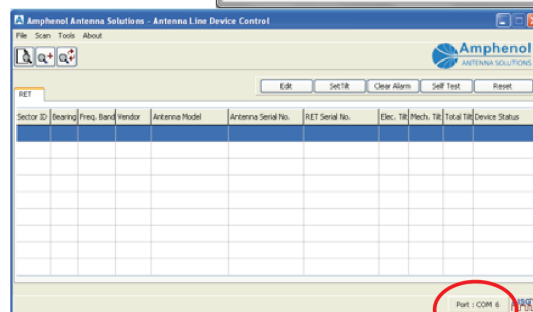
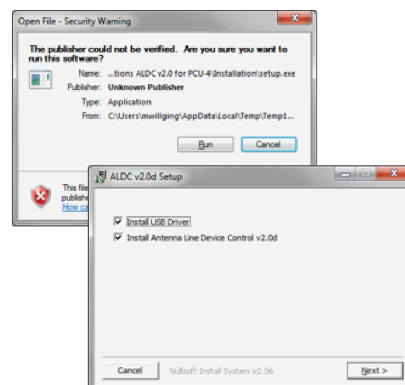
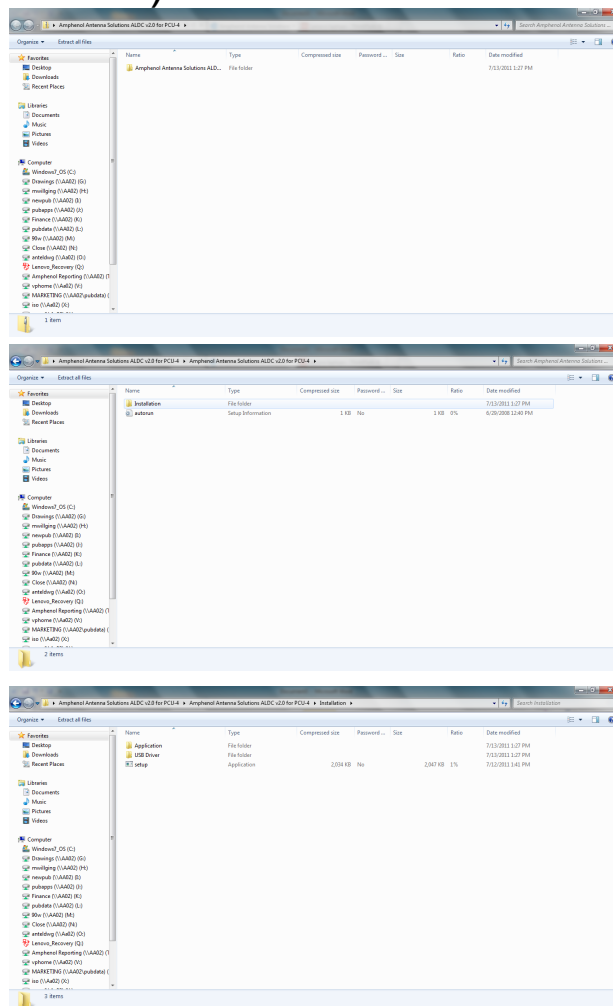
## Installing ALDC Software (Windows XP)

1. Double-click on the folder **Antenna Line Device Control Software (ALDC) v2.0 for PCU-4**. The folder contains an autorun utility and the **Installation** folder.
2. Double-click the **Installation** folder to open it, and then double-click on the **Setup** icon to start the **ALDC v2.0 Setup** tool.
3. Leave both installation options checked and click the **Next** button. **DO NOT** click the [Close] button on this window while the installation is in progress, because that will interrupt the installation. When the installation is complete your PC desktop displays the software icons and alerts you that the USB driver has been installed.
4. **Now**, plug the USB connector from the PCU-4 into one of your computers USB ports. If your speaker(s) are enabled, you should hear an audible tone after the PCU-4 connects.
5. Click on the **ALDC** icon on the desktop to start the application. The screen displays the ALDC home screen.
6. Check the **Port: COM** number at the bottom of the home screen. Any number other than zero (0) means the USB cable is connected and detected by the system.



# Installing the ALDC Software (Windows 7)

1. Double-click on the folder **Antenna Line Device Control Software (ALDC) v2.0 for PCU-4**. The folder contains an autorun utility and the **Installation** folder.
2. Double-click the **Installation** folder to open it, and then double-click on the **Setup** icon to start the **ALDC v2.0 Setup** tool. A confirmation window will appear. Click [Run], which will cause a new window to appear.
3. Leave both installation options checked and click the **Next** button. **DO NOT** click the [Close] button on this window while the installation is in progress, because that will interrupt the installation. When the installation is complete your PC desktop displays the software icons and alerts you that the USB driver has been installed.
4. **Now**, plug the USB connector from the PCU-4 into one of your computers USB ports. If your speaker(s) are enabled, you should hear an audible tone after the PCU-4 connects.
5. Click on the **ALDC** icon on the desktop to start the application. The screen displays the ALDC home screen.
6. Check the **Port: COM** number at the bottom of the home screen. Any number other than zero (0) means the USB cable is connected and detected by the system.



## Find More Information in the ALDC v2.0 Software User Guide

Now that you have successfully installed Amphenol Antenna Systems ALDC v2.0 software, refer to the ALDC Software User Guide (v2.0, Issue 3) for detailed information about the features, functions, and procedures recommended to maintain optimum RET antenna tilt.



### **Amphenol Antenna Solutions**

1300 Capital Drive

Rockford, Illinois 61109 USA

+1 815.399.0001

[www.amphenol-antennas.com](http://www.amphenol-antennas.com)