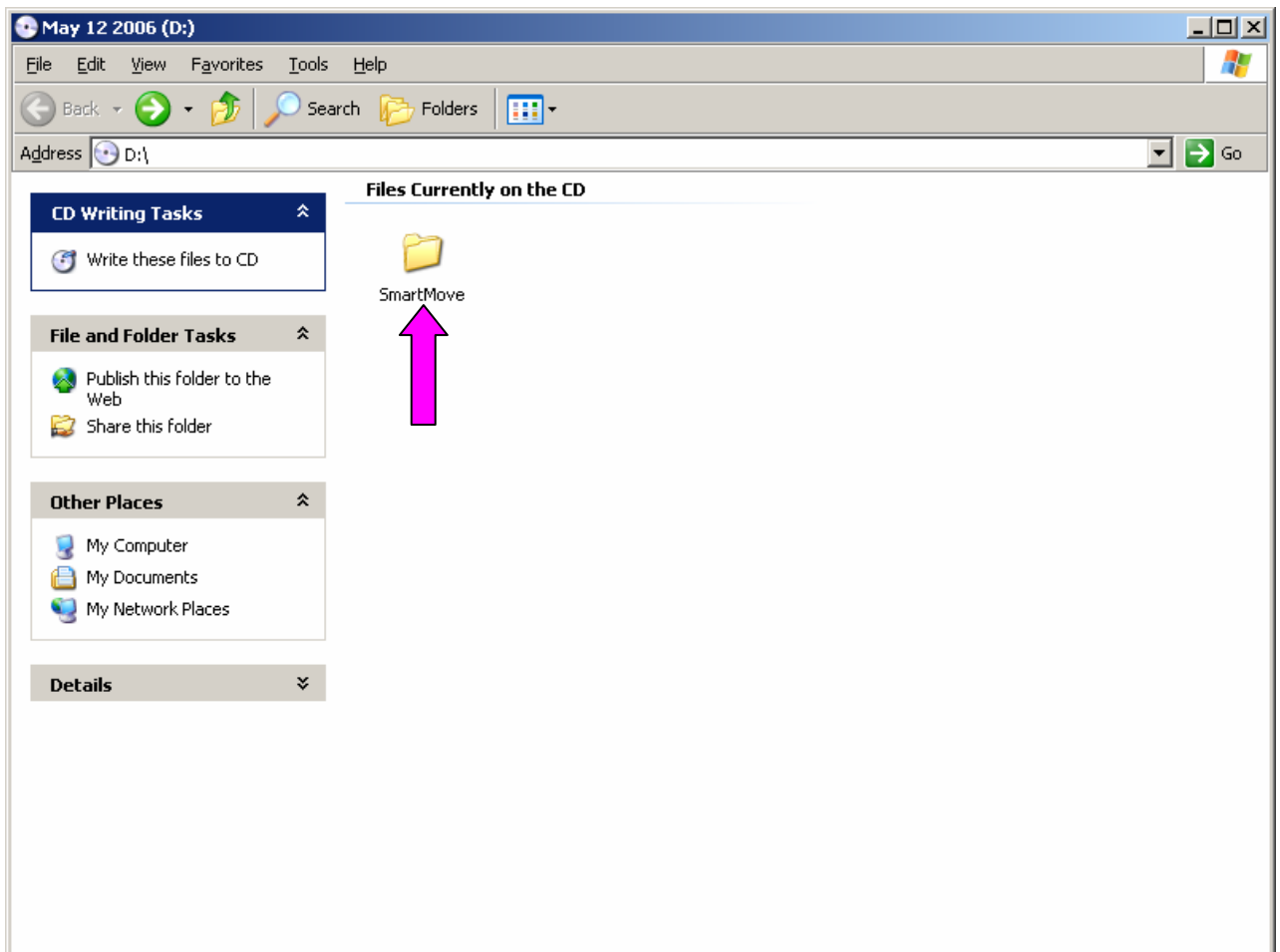
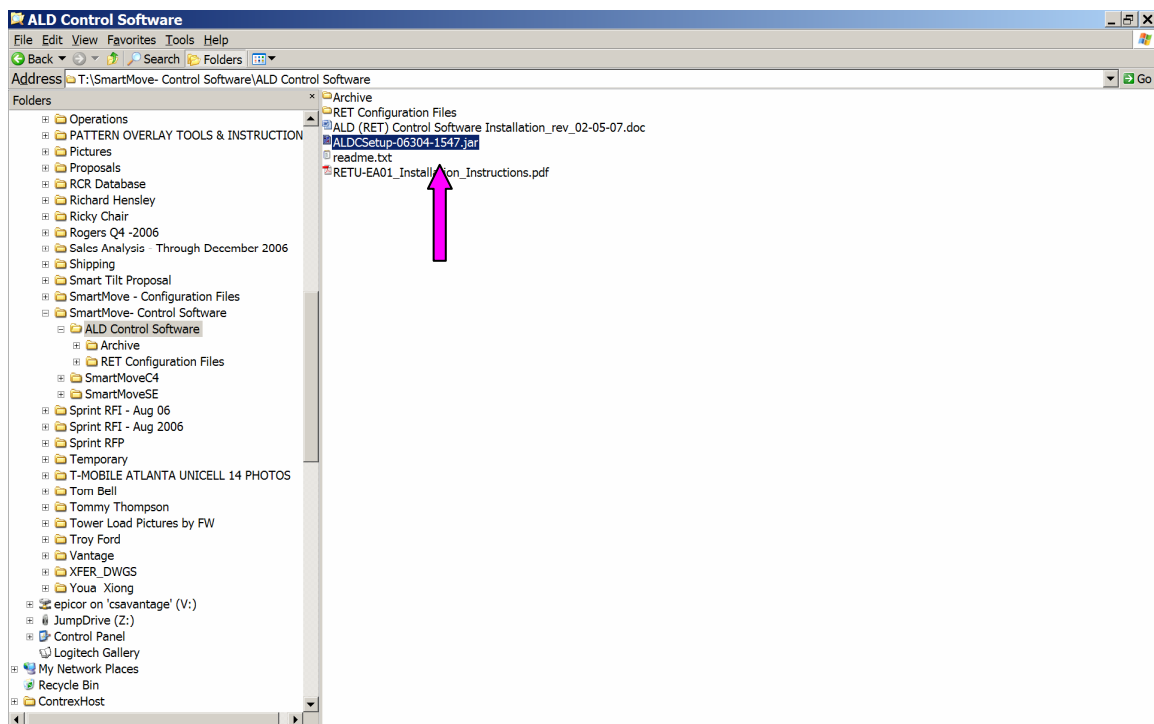


REVISION	AUTHOR	MODIFICATION	DATE
1.1	RG AND DJ	New Process	06/19/06
1.2	JET	Rev to ALDCSetup-06304-1547.jar	02/05/07
1.2a	JSM	<ul style="list-style-type: none"> <li>• New search algorithm used in device scan.</li> <li>• Managed device list sorted by <b>sector, antenna serial number</b> in ascending order, groups devices together for each antenna.</li> </ul>	09/05/07
1.2b	JSM	<ul style="list-style-type: none"> <li>• Modified to handle RAS and RAB Antenna Line Devices.</li> <li>• Bug fix for writing to Network File.</li> <li>• Bug fix for connecting to device after changing ports.</li> </ul>	10/04/07

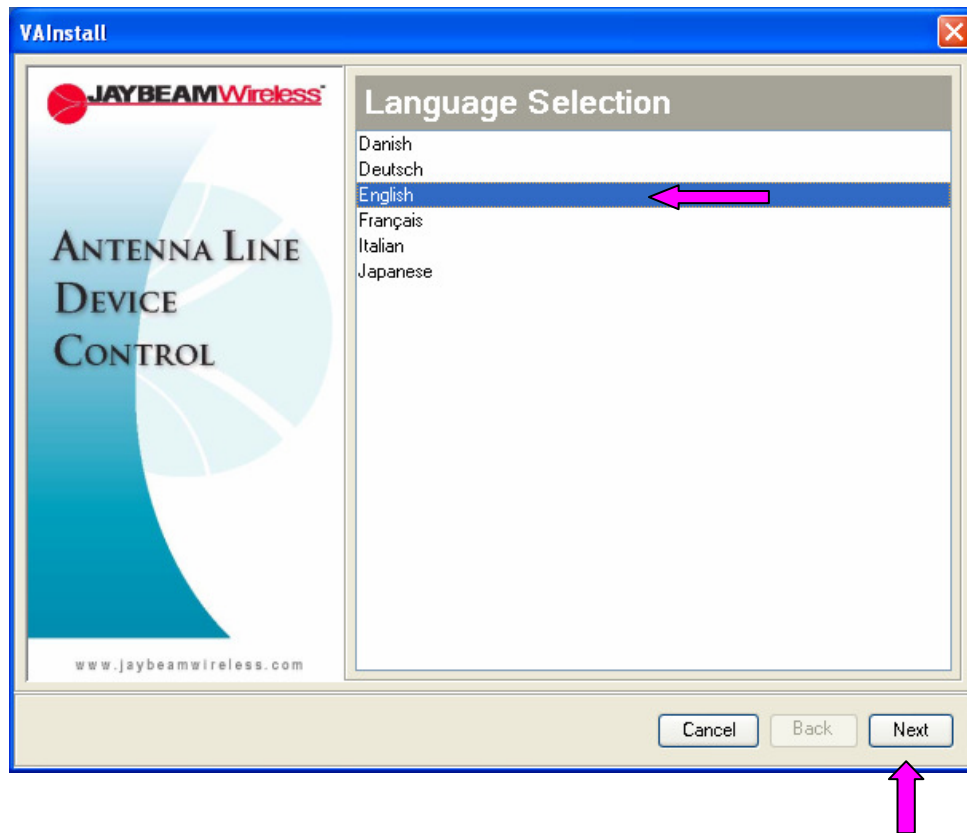
**Step 1: Remove EMS RET SOFTWARE**  
**Step 2: Open Smart Move File**



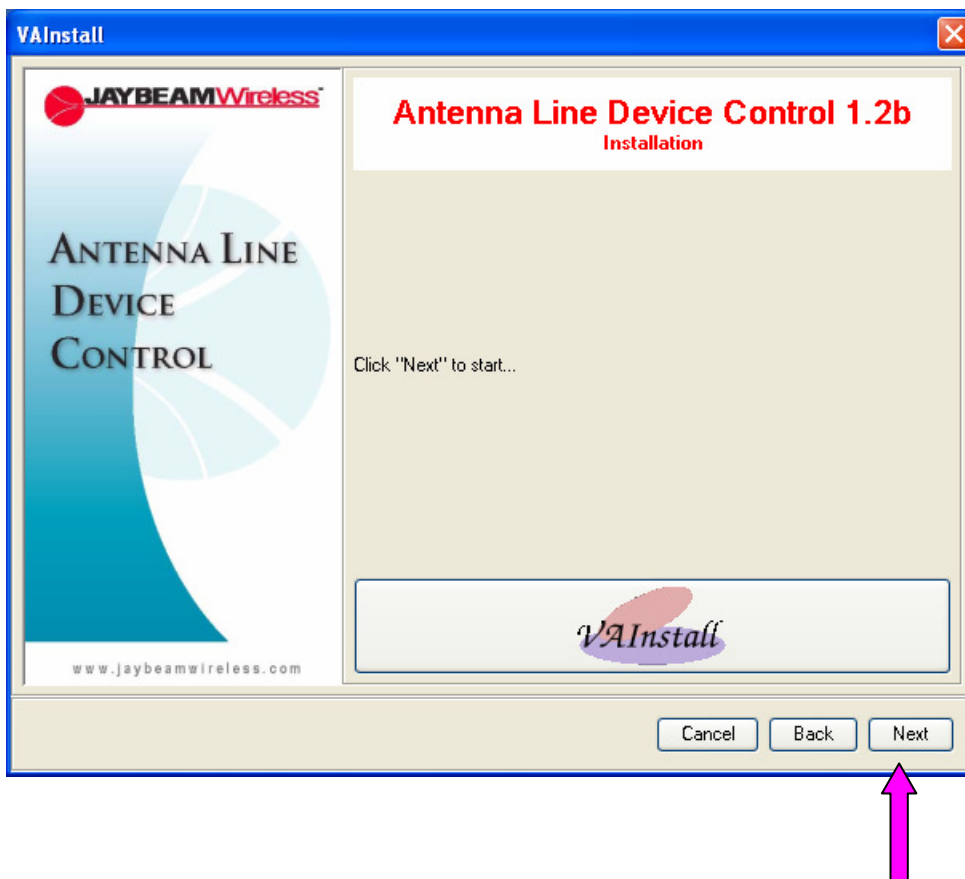
***Step 4: Open ALDCSetup-06304-1547.jar (Java executable)***



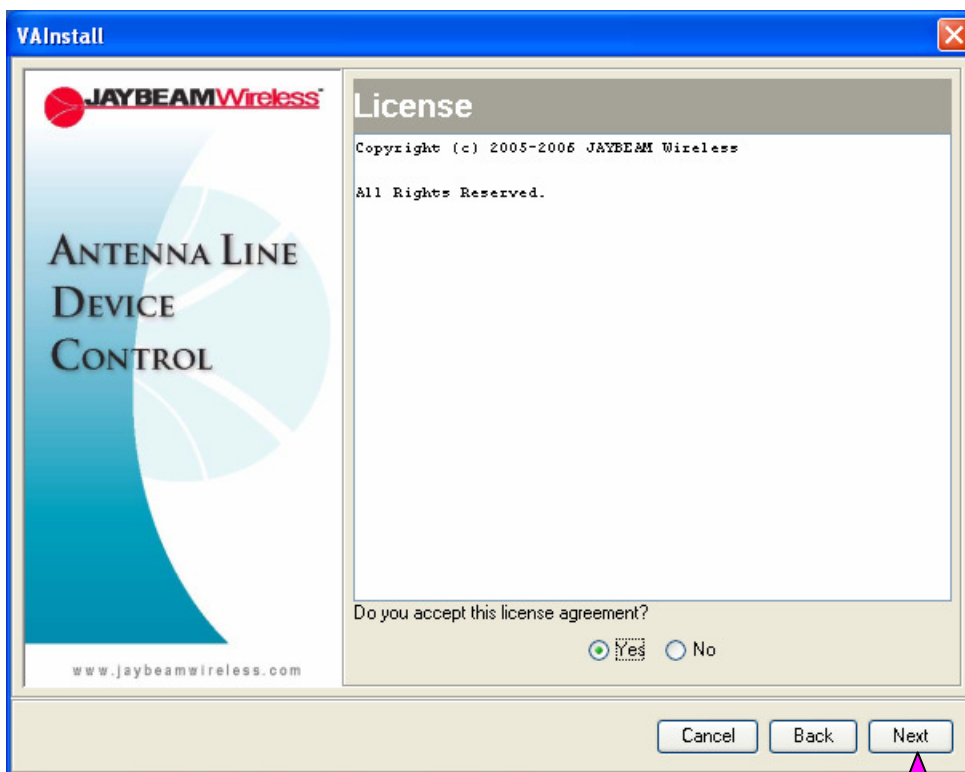
***Step 5: Select Language and click Next***



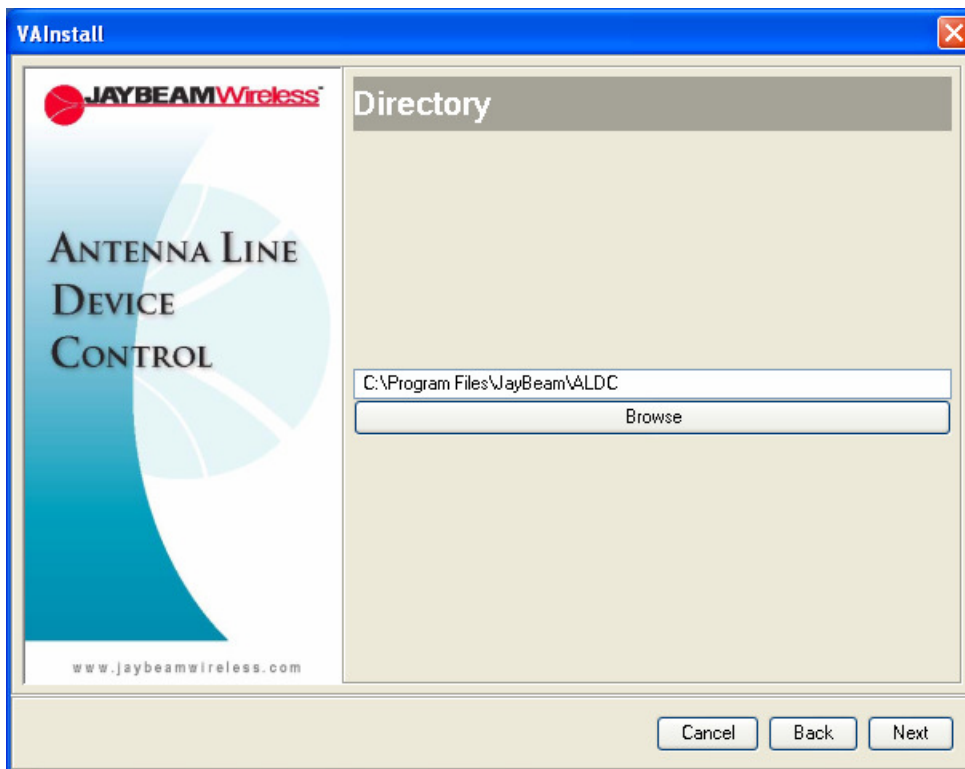
*Step 6: Select Next*

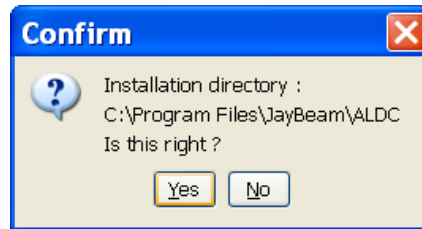


*Step 7: Select “YES” then press Next*

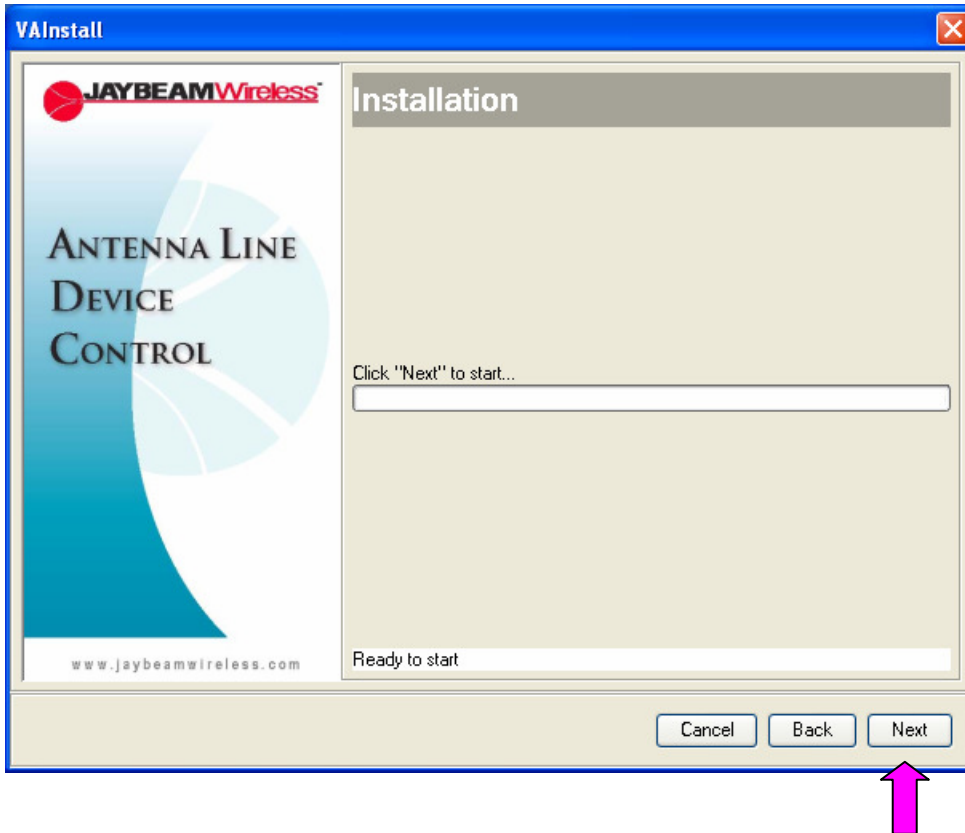


*Step 8: Select Next*





***Step 9: Select Install***



*Step 10: Select Finish*

*Step 11: Close all programs*

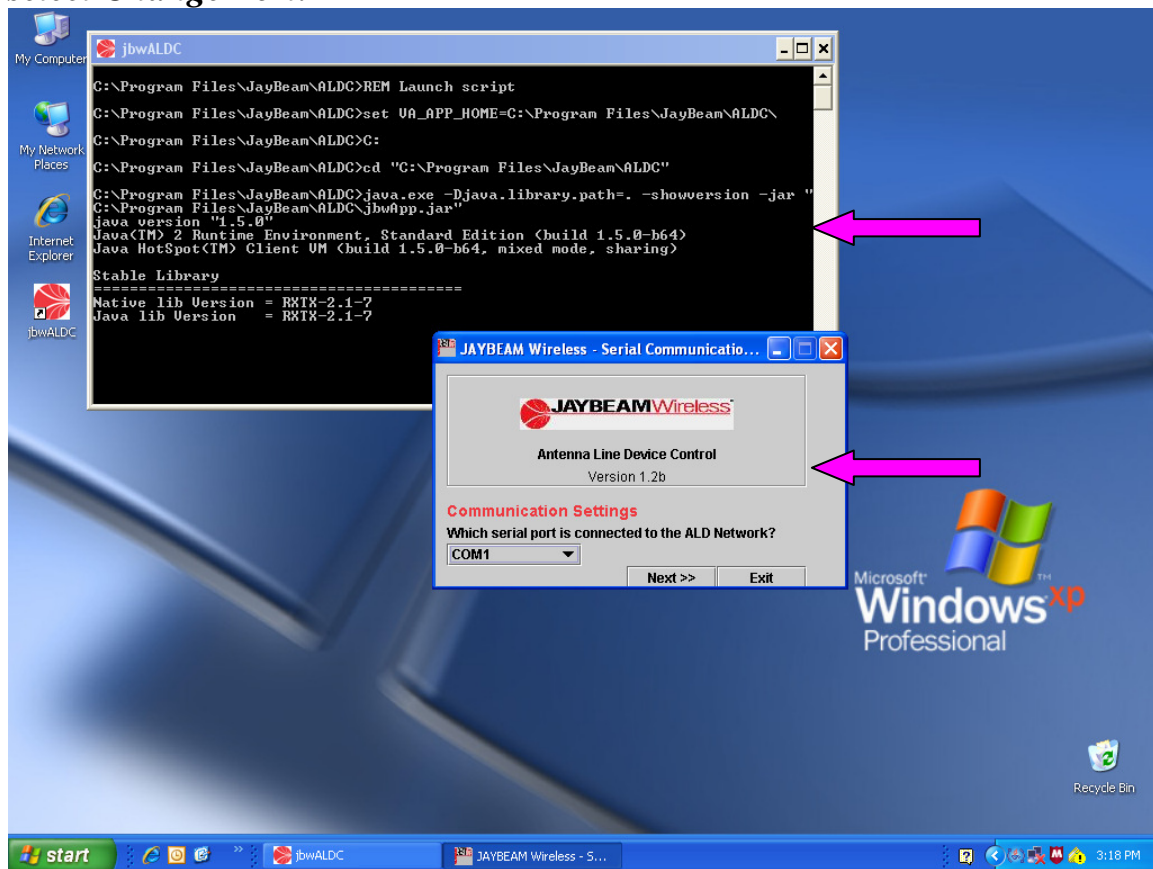
*Step 12: Go to **C:\Jaybeam wireless\Antenna Line Device Control** then*

*Minimize screen*

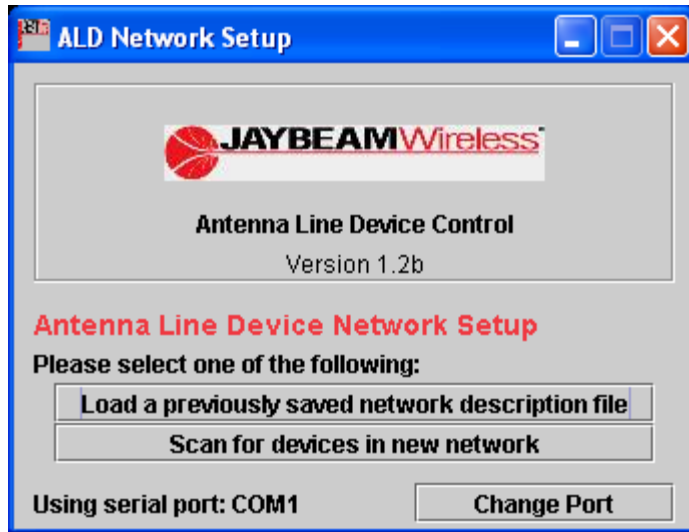
***Step 13: Open CD ROM drive Smart Move ALD Control Software***

***Step 14: Drag RET Configuration files and drop to the minimized Antenna Line device control. Close all open files.***

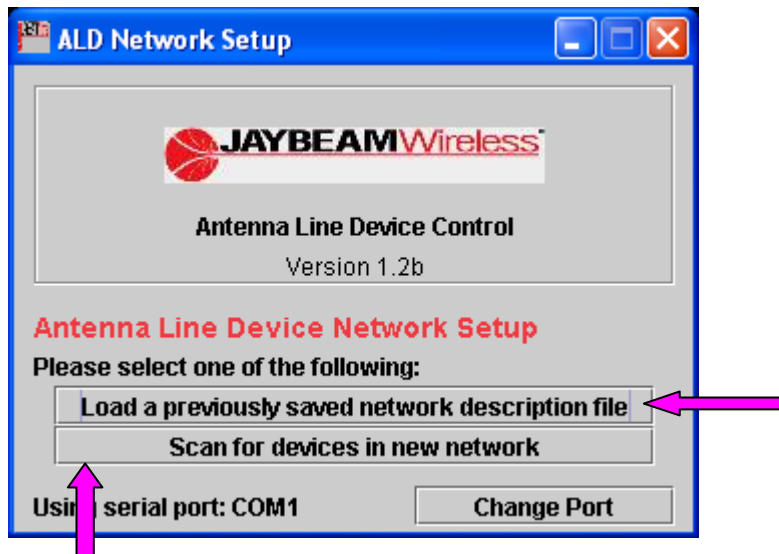
***Step 15: Open ALD Control Software connect RET, turn on PCU and select Change Port.***



***Select COM1 and click on Next.***

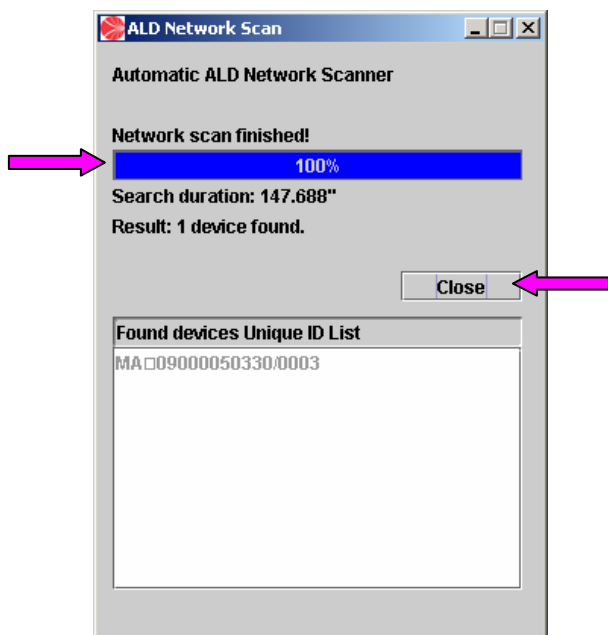
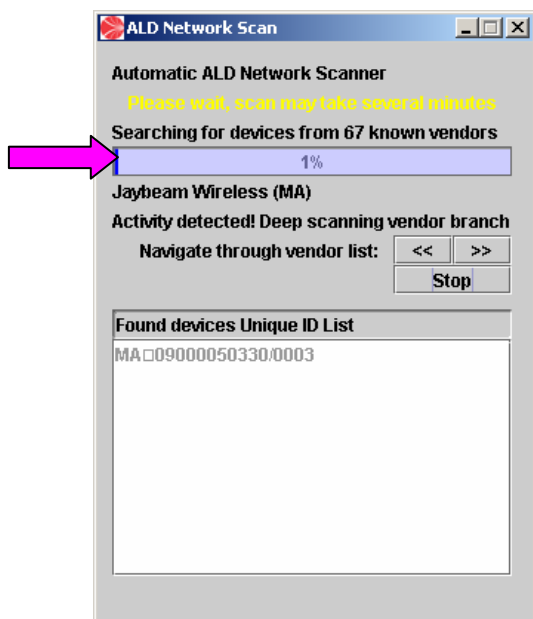


*If you are connecting to a site for the first time select Scan for devices in new network. If you have saved a previous network select Load previously saved network description file.*



**First time connecting to site select**

*When scanning for devices in a new network the following screen will appear. The first scan of a network may take up to **15 minutes** if you have multiple devices connected. Be sure to save your network information later on. Opening a saved network only takes a few seconds instead of minutes. Then select close*



*Click on Connect*

**JAYBEAM Wireless - Antenna Line Device Control**

**Managed Antenna Line Devices**

Address	Device Type	Vendor	Antenna Model...	Base ID	Sector ID	Connected?	Status
001	RET	Jaybeam Wire...				NO	No Errors

**Device Identification Information**

Unique ID: JB/RETEH/160606/030      Device Type: RET      **Connect**      Show Errors

Vendor: Jaybeam Wireless (JB)

**Antenna Information**

Model No.      Max. Tilt: 0.0 °  
Serial No.      Min. Tilt: 0.0 °      More Data...

**Operator Installation Information**

Installation Date:      Installer:      Base ID:  
Sector ID:      Antenna Bearing: 0      Installed Mechanical Tilt: 0.0 °  
Installation Comments:      Change Data...

**JAYBEAM Wireless**      Antenna Line Device Control      User Management  
Version 1.2      Baud rate: 9.6 Kbps

**ALD Network Management**

Network Scan  
Define New Device  
Delete Selected Device  
Save Network  
Load Network

**Device Control**

Read Tilt:      °      Read  
Change Tilt Angle  
New Tilt:      °      Set

RET Configuration >>  
Advanced Commands >>  
Jaybeam Commands >>

About...      Exit

*Select Change Data.....*

**Managed Antenna Line Devices**

Address	Device Type	Vendor	Antenna Model...	Base ID	Sector ID	Connected?	Status
001	RET	Jaybeam Wire...	W3X72-14-A010			YES	No Errors

**Device Identification Information**

Unique ID: JB/RETEH/160606/030      Device Type: RET      Disconnect  
Vendor: Jaybeam Wireless (JB)      Show Errors

**Antenna Information**

Model No. W3X72-14-A010      Max. Tilt: 10.0 °  
Serial No. 2006245001/C      Min. Tilt: 0.0 °      More Data... (indicated by a pink arrow)

**Operator Installation Information**

Installation Date:      Installer:      Base ID:      Change Data...  
Sector ID:      Antenna Bearing: 0      Installed Mechanical Tilt: 0.0 °  
Installation Comments:

**ALD Network Management**

Network Scan  
Define New Device  
Delete Selected Device  
Save Network  
Load Network

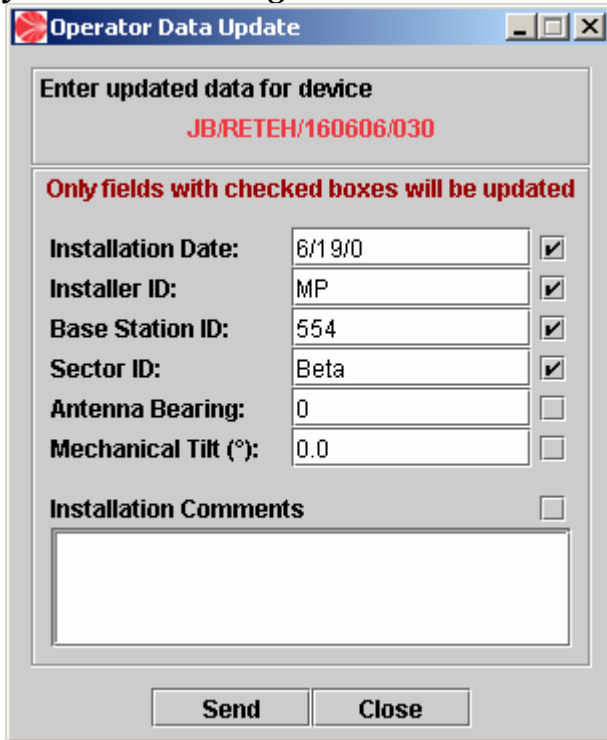
**Device Control**

Read Tilt: 0.0 °      Read  
Change Tilt Angle  
New Tilt:      Set  
RET Configuration >>  
Advanced Commands >>  
Jaybeam Commands >>

**JAYBEAM Wireless**      Antenna Line Device Control      User Management  
Version 1.2      Baud rate: 9.6 Kbps

About...      Exit

*Fill out information for each section and check boxes beside any field that you want to change as shown:*



**Operator Data Update**

Enter updated data for device  
**JB/RETEH/160606/030**

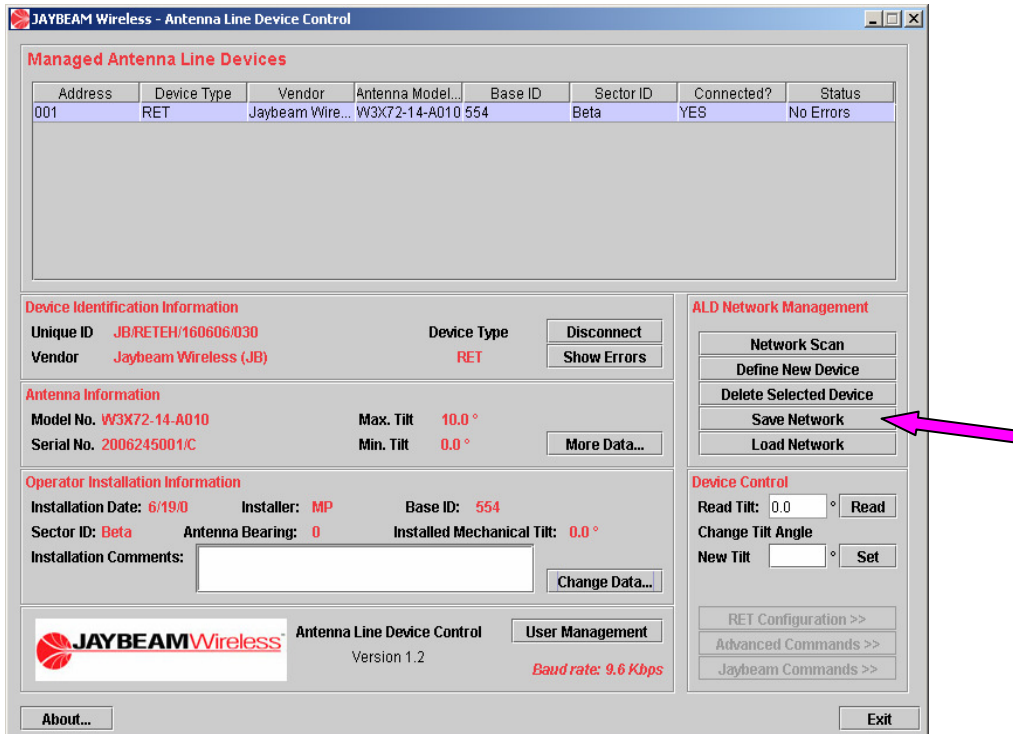
Only fields with checked boxes will be updated

Installation Date:	6/19/0	<input checked="" type="checkbox"/>
Installer ID:	MP	<input checked="" type="checkbox"/>
Base Station ID:	554	<input checked="" type="checkbox"/>
Sector ID:	Beta	<input checked="" type="checkbox"/>
Antenna Bearing:	0	<input type="checkbox"/>
Mechanical Tilt (°):	0.0	<input type="checkbox"/>

Installation Comments ☐

**Send** **Close**

### Select Save Network



**JAYBEAM Wireless - Antenna Line Device Control**

**Managed Antenna Line Devices**

Address	Device Type	Vendor	Antenna Model...	Base ID	Sector ID	Connected?	Status
001	RET	Jaybeam Wire...	W3X72-14-A010	554	Beta	YES	No Errors

**Device Identification Information**

Unique ID: JB/RETEH/160606/030      Device Type: RET      Disconnect  
Vendor: Jaybeam Wireless (JB)      Show Errors

**Antenna Information**

Model No. W3X72-14-A010      Max. Tilt: 10.0 °  
Serial No. 2006245001/C      Min. Tilt: 0.0 °      More Data...

**Operator Installation Information**

Installation Date: 6/19/0      Installer: MP      Base ID: 554  
Sector ID: Beta      Antenna Bearing: 0      Installed Mechanical Tilt: 0.0 °  
Installation Comments:       Change Data...

**ALD Network Management**

Network Scan  
Define New Device  
Delete Selected Device  
**Save Network** (highlighted with a pink arrow)  
Load Network

**Device Control**

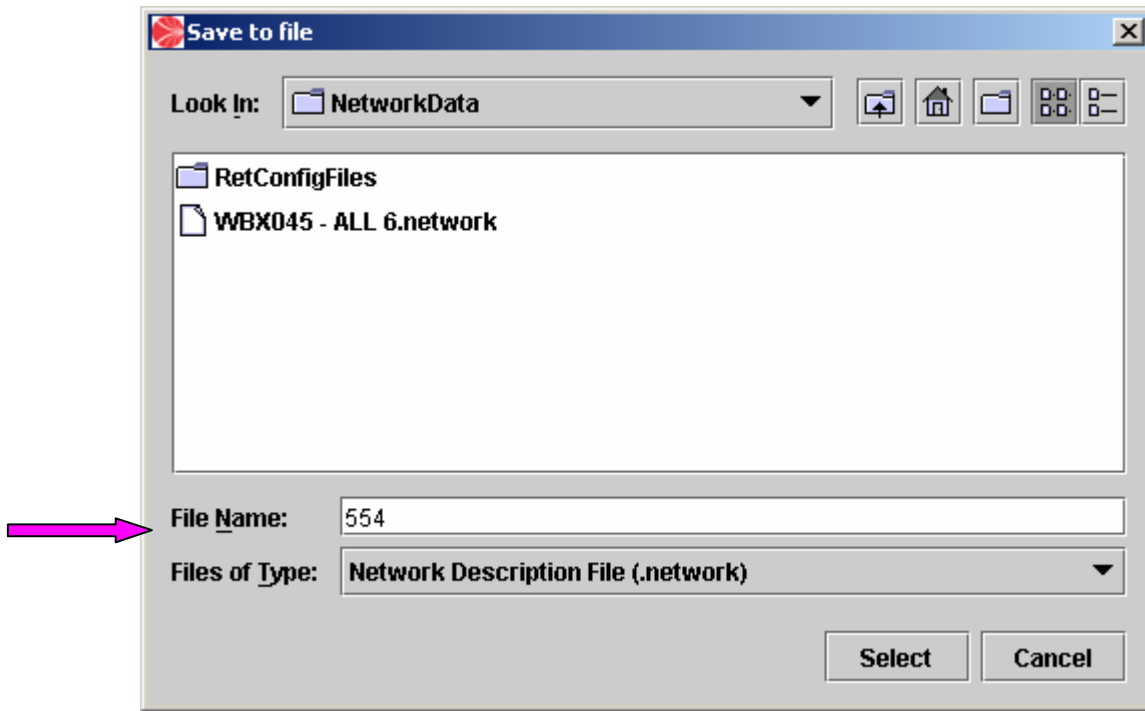
Read Tilt: 0.0 °      Read  
Change Tilt Angle  
New Tilt:  °      Set

RET Configuration >>  
Advanced Commands >>  
Jaybeam Commands >>

**JAYBEAM Wireless** Antenna Line Device Control      User Management  
Version 1.2      Baud rate: 9.6 Kbps

About...      Exit

*Enter file name and click on select:*



*Your network is now saved.*

***To open a saved Network, click on Load Network:***

**JAYBEAM Wireless - Antenna Line Device Control**

**Managed Antenna Line Devices**

Address	Device Type	Vendor	Antenna Model...	Base ID	Sector ID	Connected?	Status
001	RET	Jaybeam Wire...	W3X72-14-A010			YES	No Errors

**Device Identification Information**

Unique ID: JB/RETEH/160606/030  
 Vendor: Jaybeam Wireless (JB)  
 Device Type: RET  
 Buttons: Disconnect, Show Errors

**Antenna Information**

Model No. W3X72-14-A010  
 Serial No. 2006245001/C  
 Max. Tilt: 10.0 °  
 Min. Tilt: 0.0 °  
 Button: More Data...

**Operator Installation Information**

Installation Date:      Installer:      Base ID:  
 Sector ID:      Antenna Bearing: 0      Installed Mechanical Tilt: 0.0 °  
 Installation Comments:   
 Button: Change Data...

**ALD Network Management**

Buttons: Network Scan, Define New Device, Delete Selected Device, Save Network, Load Network

**Device Control**

Read Tilt: 0.0 °    Read  
 Change Tilt Angle  
 New Tilt:  °    Set

**RET Configuration >>**  
**Advanced Commands >>**  
**Jaybeam Commands >>**

**JAYBEAM Wireless** Antenna Line Device Control Version 1.2    User Management    Baud rate: 9.6 Kbps

Buttons: About..., Exit

***You can now change tilt by entering the desired tilt into the New Tilt box and clicking on Set. When finished making changes click on disconnect.***