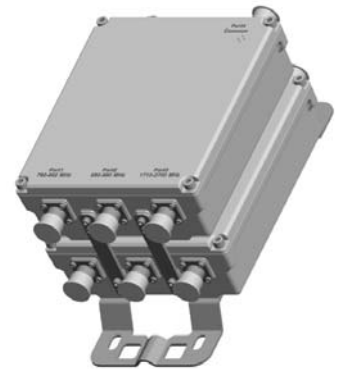


TPX-18x-JJ

Triplexer | 690-862 / 880-960 / 1695-2700 MHz | Single and Twin Units | Indoor / Outdoor

- Combines the three bands 690-862, 880-960 and 1695-2700 MHz into a single output
- Usable at BTS or antenna end
- Built in lightning protection on all ports
- Available as single or twin unit, with various DC bypass configurations
- Suitable for indoor or outdoor applications
- Pole or wall mounting



Ordering Options	Single Unit		Twin Unit	
	7/16-DIN Female Connectors	4.3-10 Female Connectors	7/16-DIN Female Connectors	4.3-10 Female Connectors

When ordering replace "x" with correct option for bypass configuration and single or twin unit.

DC bypass 700/800 port	TPX-184-JJ	TPX-184-JJ-43F	TPX-185-JJ	TPX-185-JJ-43F
DC bypass 900 port	TPX-188-JJ	TPX-188-JJ-43F	TPX-189-JJ	TPX-189-JJ-43F
DC bypass AWS port	TPX-186-JJ	TPX-186-JJ-43F	TPX-187-JJ	TPX-187-JJ-43F
Full DC bypass	TPX-182-JJ	TPX-182-JJ-43F	TPX-183-JJ	TPX-183-JJ-43F

Electrical Characteristics	
700/800 Channel (Port 1)	
Frequency Band	690-862 MHz
Insertion Loss	< 0.4 dB; 0.3 dB typical
Isolation	> 45 dB
VSWR	< 1.25
Continuous Average Power	< 300 W
IM3, 2x43 dBm	< -117 dBm
900 Channel (Port 2)	
Frequency Band	880-960 MHz
Insertion Loss	< 0.45 dB; 0.3 dB typical
Isolation	> 45 dB
VSWR	< 1.25
Continuous Average Power	< 300 W
IM3, 2x43 dBm	< -117 dBm
AWS Channel (Port 3)	
Frequency Band	1695-2700 MHz
Insertion Loss	< 0.15 dB; 0.1 dB typical
Isolation	> 45 dB
VSWR	< 1.25
Continuous Average Power	< 300 W
IM3, 2x43 dBm	< -117 dBm
DC/AISG Transparency	
Bypass Rating	2500 mA (max)
Environmental Characteristics	
Temperature Range	-40° to +65° C -40° to +149° F
Ingress Protection	IP67
Lightning Protection	10 kA 8/20 μs
Application	Indoor / Outdoor

Quoted performance parameters are provided to offer typical or range values only and may vary as a result of normal manufacturing and operational conditions. Extreme operational conditions and/or stress on structural supports is beyond our control. Such conditions may result in damage to this product. Improvements to product may be made without notice.

TPX-18x-JJ

Triplexer | 690-862 / 880-960 / 1695-2700 MHz | Single and Twin Units | Indoor / Outdoor

Mechanical Characteristics			
Connectors		7/16-DIN Female or 4.3-10 Female	
Dimensions (H x W x D) Without Connectors and without Mounting Brackets	Single Unit	181 x 212 x 66 mm	7.1 x 8.3 x 2.6 in
	Twin Unit	181 x 212 x 137 mm	7.1 x 8.3 x 5.4 in
Weight	Single Unit	3.5 kg	7.7 lbs
	Twin Unit	6.7 kg	14.8 lbs
Packing Dimensions	Single Unit	250 x 385 x 195 mm	9.8 x 15.2 x 7.7 in
	Twin Unit	270 x 405 x 270 mm	10.6 x 15.9 x 10.6 in
Mounting Options		Description	
Pole / Wall Bracket		Attach to pole diameter Ø40-Ø135 mm (Ø1.57-Ø5.3 in)	

Quoted performance parameters are provided to offer typical or range values only and may vary as a result of normal manufacturing and operational conditions. Extreme operational conditions and/or stress on structural supports is beyond our control. Such conditions may result in damage to this product. Improvements to product may be made without notice.