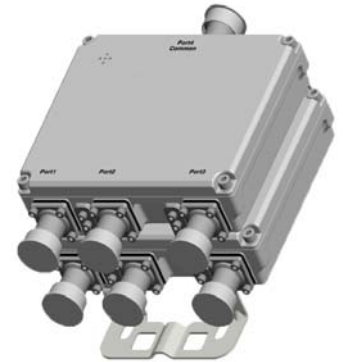


## TPX-10x-JJ

TPX-10x-JJ-43F

Triplexer | 380-960/1710-1880/1920-2200 MHz | Single and Twin Units | Indoor / Outdoor

- Combines the cellular bands 380-960, 1710-1880 and 1920-2200 MHz into a single output
- Usable at BTS or antenna end
- Built in lightning protection on all ports
- Available as single or twin unit, with various DC/AISG bypass configurations
- Suitable for indoor or outdoor applications
- Pole or wall mounting



Ordering Options	Single Unit		Twin Unit	
	7/16-DIN Female Connectors	4.3-10 Female Connectors	7/16-DIN Female Connectors	4.3-10 Female Connectors

When ordering replace "x" with correct option for bypass configuration and single or twin unit.

DC/AISG bypass 380-960 port	TPX-102-JJ	TPX-102-JJ-43F	TPX-103-JJ	TPX-103-JJ-43F
DC/AISG bypass 1800 port	TPX-106-JJ	TPX-106-JJ-43F	TPX-107-JJ	TPX-107-JJ-43F
DC/AISG bypass 2100 port	TPX-100-JJ	TPX-100-JJ-43F	TPX-101-JJ	TPX-101-JJ-43F
Full DC/AISG bypass	TPX-104-JJ	TPX-104-JJ-43F	TPX-105-JJ	TPX-105-JJ-43F
No DC/AISG bypass	TPX-108-JJ	TPX-108-JJ-43F	TPX-107-JJ	TPX-107-JJ-43F

Electrical Characteristics	
380-960 Channel (Port 1)	
Frequency Band	380-960 MHz
Insertion Loss	< 0.2 dB
Isolation	> 50 dB
VSWR	< 1.20
Continuous Average Power	< 300 W
IM3, 2x43 dBm	< -117 dBm
1800 Channel (Port 2)	
Frequency Band	1710-1880 MHz
Insertion Loss	< 0.3 dB
Isolation	> 50 dB
VSWR	< 1.20
Continuous Average Power	< 300 W
IM3, 2x43 dBm	< -117 dBm
2100 Channel (Port 3)	
Frequency Band	1920-2200 MHz
Insertion Loss	< 0.3 dB
Isolation	> 50 dB
VSWR	< 1.20
Continuous Average Power	< 300 W
IM3, 2x43 dBm	< -117 dBm
DC/AISG Transparency	
Bypass Rating	2500 mA (max)
Environmental	
Temperature Range	-40° to +65° C      -40° to 149° F
Ingress Protection	IP67
Lightning Protection	10 kA 8/20 μs
Application	Indoor / Outdoor

Quoted performance parameters are provided to offer typical, peak or range values only and may vary as a result of normal testing, manufacturing and operational conditions. Extreme operational conditions and/or stress on structural supports is beyond our control. Such conditions may result in damage to this product. Improvements to products may be made without notice.

## TPX-10x-JJ

TPX-10x-JJ-43F

Triplexer | 380-960/1710-1880/1920-2200 MHz | Single and Twin Units | Indoor / Outdoor

Mechanical Characteristics			
Connectors		7/16-DIN Female Long Neck or 4.3-10 Female Long Neck	
Dimensions (H x W x D) Without Connectors or Mounting Brackets	Single Unit	192.6 x 158 x 50.5 mm	7.6 x 6.2 x 2.0 in
	Twin Unit	192.6 x 158 x 105 mm	7.6 x 6.2 x 4.1 in
Weight	Single Unit	3.0 kg	6.6 lbs
	Twin Unit	5.65 kg	12.5 lbs
Packing Dimensions	Single Unit	345 x 330 x 170 mm	13.6 x 13.0 x 6.7 in
	Twin Unit	345 x 330 x 220 mm	13.6 x 13.0 x 8.7 in
Mounting Options		Description	
Pole / Wall Bracket (included)		Attach to pole diameter Ø40-Ø135 mm (Ø1.57-Ø5.3 in)	

Quoted performance parameters are provided to offer typical, peak or range values only and may vary as a result of normal testing, manufacturing and operational conditions. Extreme operational conditions and/or stress on structural supports is beyond our control. Such conditions may result in damage to this product. Improvements to products may be made without notice.