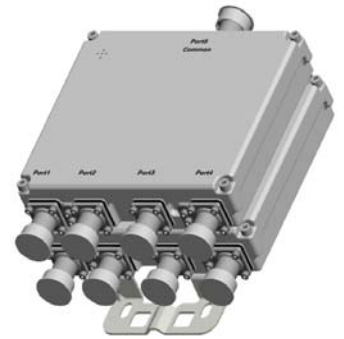


QPX-53x-JJ

Quadruplexer | 380-960/1710-1880/1920-2200/2300-2700 MHz | Single and Twin Units | Indoor / Outdoor

- Combines four bands into a single output
- Usable at BTS or antenna end
- Built in lightning protection on all ports
- Available as single or twin unit
- Suitable for indoor or outdoor applications



Ordering Options	Single Unit	Twin Unit
When ordering replace "x" with correct option for bypass configuration and single or twin unit.		
DC/AISG bypass 380-960 MHz port	QPX-534-06	QPX-535-06
DC/AISG bypass 1710-1880 MHz port	QPX-536-06	QPX-537-06
DC/AISG bypass 1920-2200 MHz port	QPX-538-06	QPX-539-06
DC/AISG bypass 2300-2700 MHz port	QPX-5310-06	QPX-5311-06
Full DC/AISG bypass	QPX-532-06	QPX-533-06
Electrical Characteristics		
690-862 MHz Channel (Port 1)		
Frequency Band	380-960 MHz	
Insertion Loss	< 0.2 dB	
VSWR	< 1.25	
Isolation	> 50 dB	
Input Power	< 300 W	
IM3, 2x43 dBm	< -117 dBm	
880-960 MHz Channel (Port 2)		
Frequency Band	1710-1880 MHz	
Insertion Loss	< 0.3 dB	
VSWR	< 1.25	
Isolation	> 50 dB	
Input Power	< 300 W	
IM3, 2x43 dBm	< -117 dBm	
1710-1880 MHz Channel (Port 3)		
Frequency Band	1920-2200 MHz	
Insertion Loss	< 0.3 dB	
VSWR	< 1.25	
Isolation	> 50 dB	
Input Power	< 300 W	
IM3, 2x43 dBm	< -117 dBm	
1920-2200 MHz Channel (Port 4)		
Frequency Band	2300-2700 MHz	
Insertion Loss	< 0.2 dB	
VSWR	< 1.25	
Isolation	> 50 dB	
Input Power	< 300 W	
IM3, 2x43 dBm	< -117 dBm	

Quoted performance parameters are provided to offer typical, peak or range values only and may vary as a result of normal testing, manufacturing and operational conditions. Extreme operational conditions and/or stress on structural supports is beyond our control. Such conditions may result in damage to this product. Improvements to products may be made without notice.

QPX-53x-JJ

Quadruplexer | 380-960/1710-1880/1920-2200/2300-2700 MHz | Single and Twin Units | Indoor / Outdoor

Environmental Characteristics			
Operating Temperature		-40° to +65° C (-40° to 149° F)	
Application		Indoor / Outdoor	
IP Rating		IP67	
Lightning Protection		10kA (8/20µs)	
Mechanical Characteristics			
Connectors		7/16-DIN Female Long Neck	
Dimensions (H x W x D) Without Connectors or Mounting Brackets	Single Unit	225 x 196 x 50.5 mm	8.9 x 7.7 x 2.0 in
	Twin Unit	225 x 196 x 105 mm	8.9 x 7.7 x 4.1 in
Weight	Single Unit	4.2 kg	9.3 lbs
	Twin Unit	8.0 kg	17.6 lbs
Packing Dimensions	Single Unit	370 x 310 x 205 mm	14.6 x 12.2 x 8.1 in
	Twin Unit	370 x 310 x 265 mm	14.6 x 12.2 x 10.4 in
Mounting Options		Description	
Pole / Wall Bracket (included)		Attach to pole diameter Ø40-Ø135 mm (Ø1.57-Ø5.3 in)	

Quoted performance parameters are provided to offer typical, peak or range values only and may vary as a result of normal testing, manufacturing and operational conditions. Extreme operational conditions and/or stress on structural supports is beyond our control. Such conditions may result in damage to this product. Improvements to products may be made without notice.