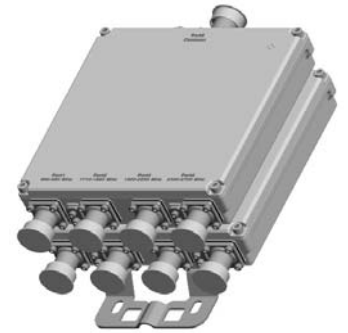


## QPX-52x-JJ

Quadruplexer | 690-862/880-960/1710-1880/1920-2200 MHz | Single and Twin Units | Indoor / Outdoor

- Combines four bands into a single output
- Usable at BTS or antenna end
- Built in lightning protection on all ports
- Available as single or twin unit
- Suitable for indoor or outdoor applications



Ordering Options	Single Unit		Twin Unit	
	7/16-DIN Female Connectors	4.3-10 Female Connectors	7/16-DIN Female Connectors	4.3-10 Female Connectors
When ordering replace "x" with correct option for bypass configuration and single or twin unit.				
DC/AISG bypass 690-862 MHz port	QPX-524-06	QPX-524-06-43F	QPX-525-06	QPX-525-06-43F
DC/AISG bypass 880-960 MHz port	QPX-526-06	QPX-526-06-43F	QPX-527-06	QPX-527-06-43F
DC/AISG bypass 1710-1880 MHz port	QPX-528-06	QPX-528-06-43F	QPX-529-06	QPX-529-06-43F
DC/AISG bypass 1920-2200 MHz port	QPX-5210-06	QPX-5210-06-43F	QPX-5211-06	QPX-5211-06-43F
Full DC/AISG bypass	QPX-522-06	QPX-522-06-43F	QPX-523-06	QPX-523-06-43F

Electrical Characteristics	
<b>690-862 MHz Channel (Port 1)</b>	
Frequency Band	690-862 MHz
Insertion Loss	< 0.2 dB
VSWR	< 1.25
Isolation	> 45 dB
Input Power	< 300 W
IM3, 2x43 dBm	< -117 dBm
<b>880-960 MHz Channel (Port 2)</b>	
Frequency Band	880-960 MHz
Insertion Loss	< 0.3 dB
VSWR	< 1.25
Isolation	> 45 dB
Input Power	< 300 W
IM3, 2x43 dBm	< -117 dBm
<b>1710-1880 MHz Channel (Port 3)</b>	
Frequency Band	1710-1880 MHz
Insertion Loss	< 0.3 dB
VSWR	< 1.25
Isolation	> 45 dB
Input Power	< 300 W
IM3, 2x43 dBm	< -117 dBm
<b>1920-2200 MHz Channel (Port 4)</b>	
Frequency Band	1920-2200 MHz
Insertion Loss	< 0.2 dB
VSWR	< 1.25
Isolation	> 45 dB
Input Power	< 300 W
IM3, 2x43 dBm	< -117 dBm

Quoted performance parameters are provided to offer typical, peak or range values only and may vary as a result of normal testing, manufacturing and operational conditions. Extreme operational conditions and/or stress on structural supports is beyond our control. Such conditions may result in damage to this product. Improvements to products may be made without notice.

## QPX-52x-JJ

Quadruplexer | 690-862/880-960/1710-1880/1920-2200 MHz | Single and Twin Units | Indoor / Outdoor

Environmental Characteristics			
Operating Temperature		-40° to +65° C (-40° to 149° F)	
Application		Indoor / Outdoor	
IP Rating		IP67	
Lightning Protection		10kA (8/20µs)	
Mechanical Characteristics			
Connectors		7/16-DIN Female or 4.3-10 Female	
Dimensions (H x W x D) Without Connectors or Mounting Brackets	Single Unit	230 x 220 x 52 mm	9.1 x 8.7 x 2.0 in
	Twin Unit	230 x 220 x 112 mm	9.1 x 8.7 x 4.4 in
Weight	Single Unit	4.2 kg	9.3 lbs
	Twin Unit	8 kg	17.6 lbs
Packing Dimensions	Single Unit	390 x 310 x 205 mm	15.4 x 12.2 x 8.1 in
	Twin Unit	335 x 405 x 265 mm	13.2 x 15.9 x 10.4 in
Mounting Options		Description	
Pole / Wall Bracket (included)		Attach to pole diameter Ø40-Ø135 mm (Ø1.57-Ø5.3 in)	

Quoted performance parameters are provided to offer typical, peak or range values only and may vary as a result of normal testing, manufacturing and operational conditions. Extreme operational conditions and/or stress on structural supports is beyond our control. Such conditions may result in damage to this product. Improvements to products may be made without notice.