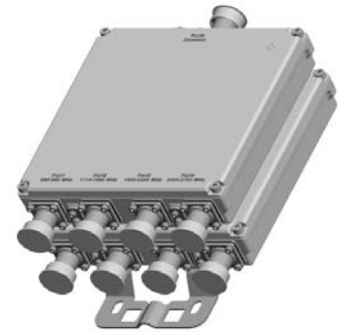


QPX-51x-JJ

Quadruplexer | 690-960/1710-1880/1920-2170/2270-2700 MHz | Single and Twin Units | Indoor / Outdoor

- Combines four bands into a single output
- Usable at BTS or antenna end
- Built in lightning protection on all ports
- Available as single or twin unit
- Suitable for indoor or outdoor applications



Ordering Options	Single Unit		Twin Unit	
	7/16-DIN Female Connectors	4.3/10 Female Connectors	7/16-DIN Female Connectors	4.3/10 Female Connectors
When ordering replace "x" with correct option for bypass configuration and single or twin unit.				
DC/AISG bypass 690-960 MHz port	QPX-514-JJ	QPX-514-JJ-43F	QPX-515-JJ	QPX-515-JJ-43F
DC/AISG bypass 1710-1880 MHz port	QPX-516-JJ	QPX-516-JJ-43F	QPX-517-JJ	QPX-517-JJ-43F
DC/AISG bypass 1920-2170 MHz port	QPX-518-JJ	QPX-518-JJ-43F	QPX-519-JJ	QPX-519-JJ-43F
DC/AISG bypass 2270-2700 MHz port	QPX-5110-JJ	QPX-5110-JJ-43F	QPX-5111-JJ	QPX-5111-JJ-43F
Full DC/AISG bypass	QPX-512-JJ	QPX-512-JJ-43F	QPX-513-JJ	QPX-513-JJ-43F

Electrical Characteristics	
690-960 MHz Channel (Port 1)	
Frequency Band	690-960 MHz
Insertion Loss	< 0.2 dB
VSWR	< 1.25
Isolation	> 50 dB
Input Power	< 300 W
IM3, 2x43 dBm	< -117 dBm
1710-1880 MHz Channel (Port 2)	
Frequency Band	1710-1880 MHz
Insertion Loss	< 0.3 dB
VSWR	< 1.25
Isolation	> 50 dB
Input Power	< 300 W
IM3, 2x43 dBm	< -117 dBm
1920-2170 MHz Channel (Port 3)	
Frequency Band	1920-2170 MHz
Insertion Loss	< 0.3 dB
VSWR	< 1.25
Isolation	> 50 dB
Input Power	< 300 W
IM3, 2x43 dBm	< -117 dBm
2270-2700 MHz Channel (Port 4)	
Frequency Band	2270-2700 MHz
Insertion Loss	< 0.2 dB
VSWR	< 1.25
Isolation	> 50 dB
Input Power	< 300 W
IM3, 2x43 dBm	< -117 dBm

Quoted performance parameters are provided to offer typical, peak or range values only and may vary as a result of normal testing, manufacturing and operational conditions. Extreme operational conditions and/or stress on structural supports is beyond our control. Such conditions may result in damage to this product. Improvements to products may be made without notice.

QPX-51x-JJ

Quadruplexer | 690-960/1710-1880/1920-2170/2270-2700 MHz | Single and Twin Units | Indoor / Outdoor

Environmental Characteristics			
Operating Temperature		-40° to +65° C (-40° to 149° F)	
Application		Indoor / Outdoor	
Operating Humidity		≤ 100%	
IP Rating		IP68	
Lightning Protection		10kA (8/20μs)	
Mechanical Characteristics			
Connectors		7/16-DIN Female or 4.3-10 Female	
Dimensions (H x W x D) Without Connectors or Mounting Brackets	Single Unit	230 x 220 x 52 mm	9.1 x 8.7 x 2.0 in
	Twin Unit	230 x 220 x 112 mm	9.1 x 8.7 x 4.4 in
Weight	Single Unit	4.2 kg	9.3 lbs
	Twin Unit	8 kg	17.6 lbs
Packing Dimensions	Single Unit	390 x 310 x 205 mm	15.4 x 12.2 x 8.1 in
	Twin Unit	335 x 405 x 265 mm	13.2 x 15.9 x 10.4 in
Mounting Options		Description	
Pole / Wall Bracket (included)		Attach to pole diameter Ø40-Ø135 mm (Ø1.57-Ø5.3 in)	

Quoted performance parameters are provided to offer typical, peak or range values only and may vary as a result of normal testing, manufacturing and operational conditions. Extreme operational conditions and/or stress on structural supports is beyond our control. Such conditions may result in damage to this product. Improvements to products may be made without notice.