

## Software Installation

Before connecting the PA-USB/485 Protocol Adapter to a USB port on your PC, it is necessary to install the driver.

For driver requests or additional information, contact us at [info@amphenol-antennas.com](mailto:info@amphenol-antennas.com).

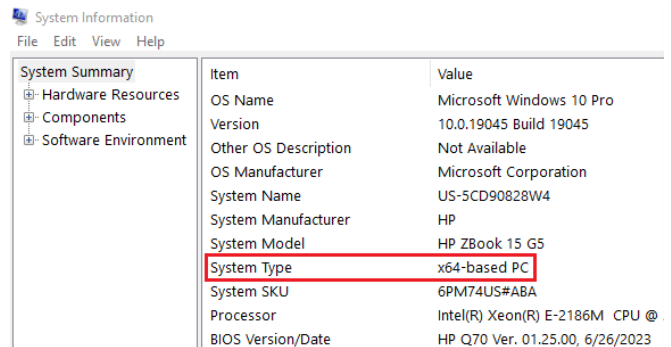
For operation of the **PA-USB/485 Protocol Adapter** with the **NEM-ALD-W** software, please refer to the document: "[Network Element Manager: NEM-ALD-W User's Manual](#)".



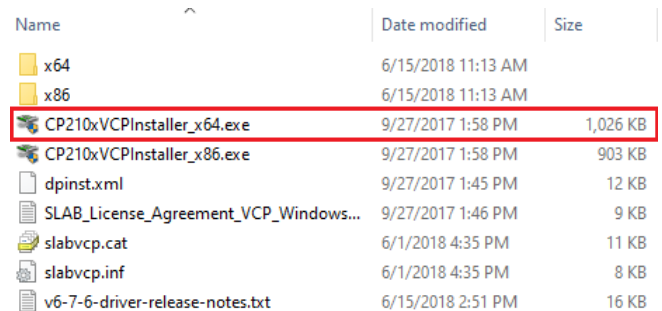
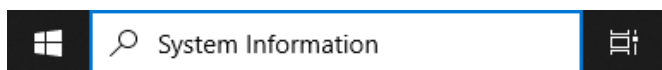
### DRIVER INSTALLATION

- Use this link to access the driver files: [https://www.silabs.com/Support Documents/Software/CP210x\\_Windows\\_Drivers.zip](https://www.silabs.com/Support Documents/Software/CP210x_Windows_Drivers.zip).
- Copy the file "CP210x\_Windows\_Drivers.zip" into a temporary folder.
- Extract the contents of "CP210x\_Windows\_Drivers.zip" to a folder of the same name
- The zip file includes a file called "v6-7-6-driver-release-notes.txt" with detailed instructions; a brief instruction follows.
- Determine if you are running a 32-bit or 64-bit version of Windows OS:
  - In the search window on the Windows task bar, type "**System Information**" and press enter.

- In the **System Information** window, locate the **System Type** property, for example:



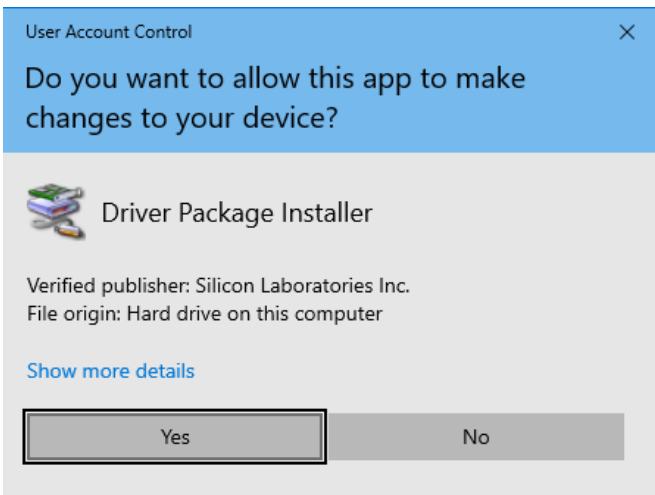
- Open the "CP210x\_Windows\_Drivers" folder. If your **System Type** is x64 as in the example above, then execute "CP210xVCPInstaller\_x64.exe".



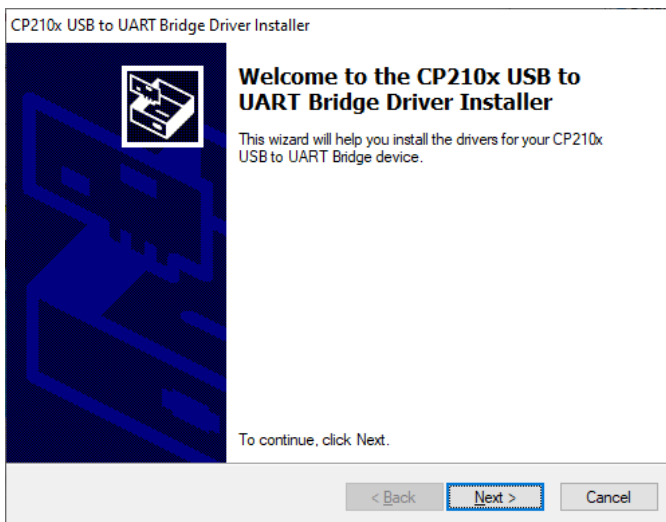
## Software Installation

### DRIVER INSTALLATION

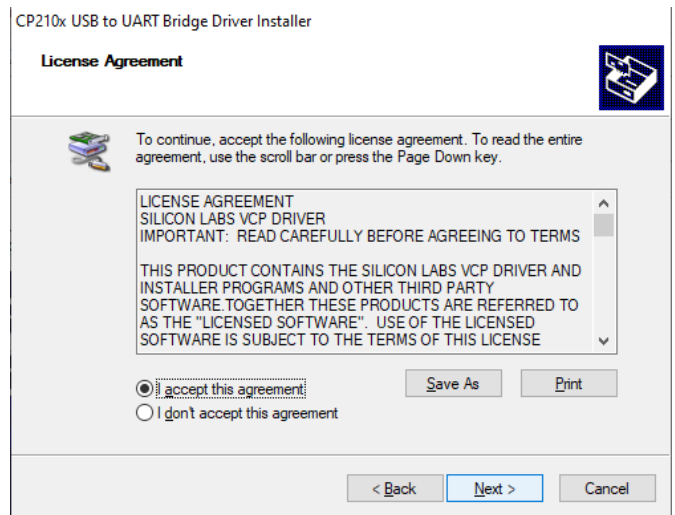
- Once launched, the installer displays the following prompt. Click YES to begin the installation.



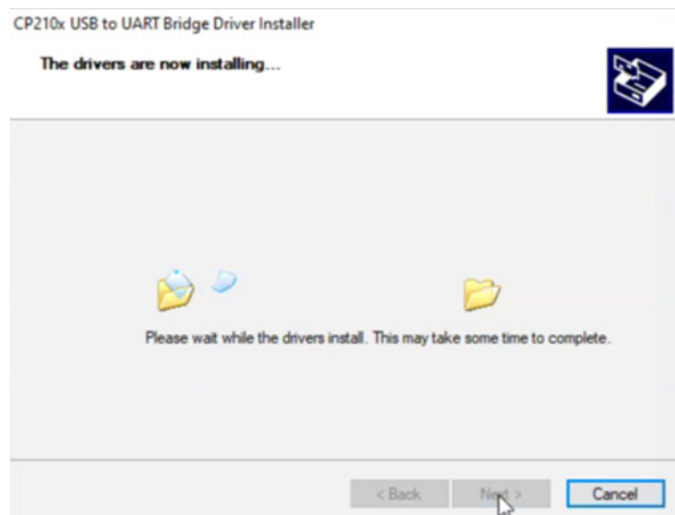
- Click NEXT to continue.



- Be sure to read the terms of the license and click the option to accept it. Click NEXT to begin the installation.



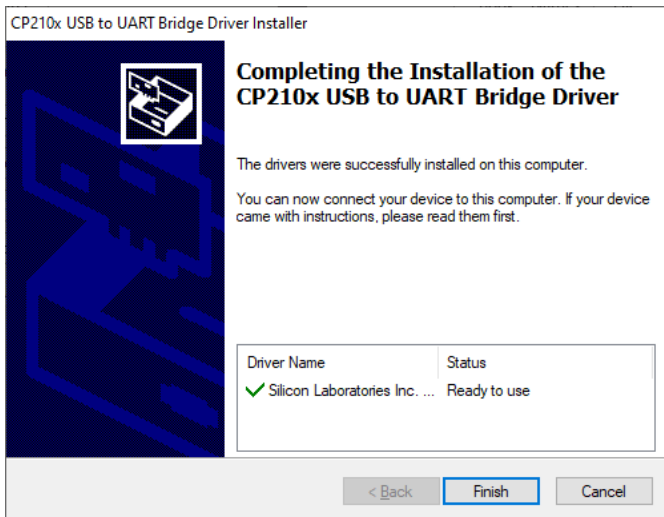
- The installation completes quickly.



# Software Installation

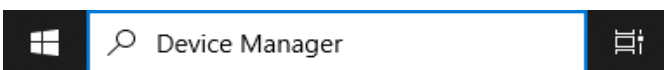
## DRIVER INSTALLATION

11. Click FINISH to complete the installation.

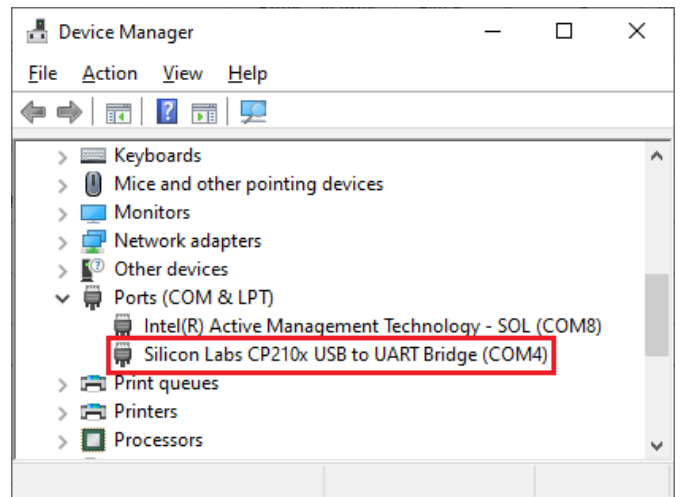


12. Now, when the PA-USB/485 Protocol Adapter is connected to a USB port on the PC, Windows automatically detects it and links it to a virtual COM port. The COM port number is automatically selected by Windows to avoid any hardware conflicts with other serial devices. However, the COM port number can be manually modified as follows.

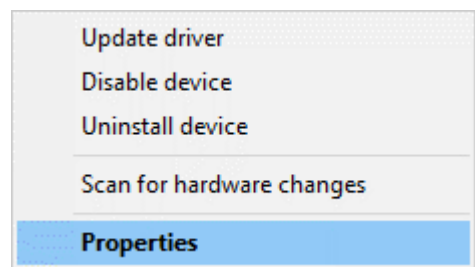
13. In the search window on the Windows task bar, type "Device Manager" and press enter.



14. In the **Device Manager** window, expand the **Ports (COM & LPT)** item, and locate the **Silicon Labs CP210x USB to UART Bridge**. Note, for example below, the PA is assigned to **COM4**.



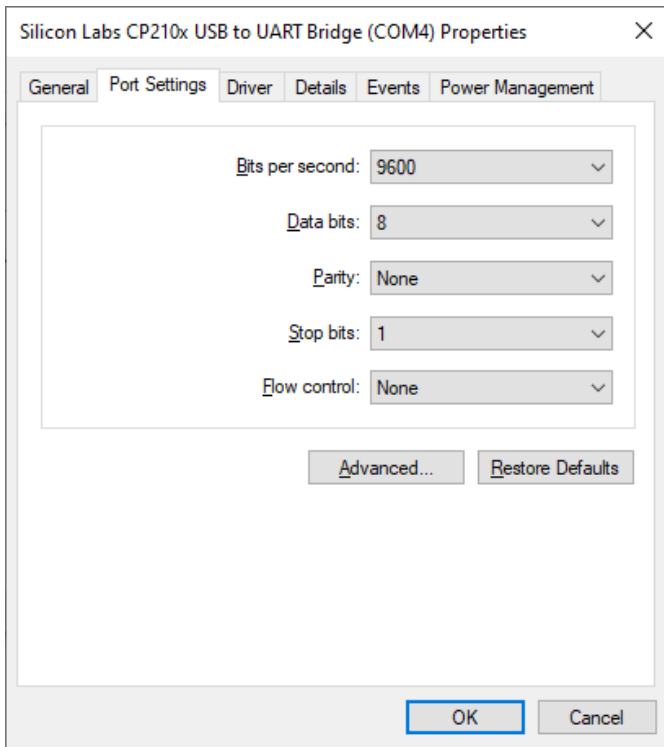
15. Right click on **Silicon Labs CP210x USB to UART Bridge**, and in the pop-up window select **Properties**.



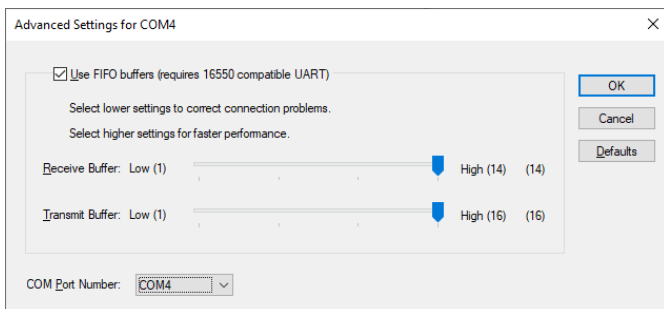
## Software Installation

### DRIVER INSTALLATION

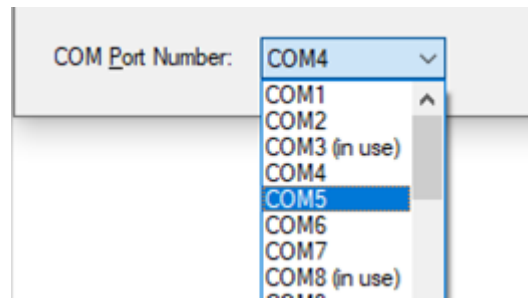
16. In the **Properties** window, click on the **ADVANCED** button.



17. In the **Advanced Settings** window, click the drop-down list to change the COM port number as required.

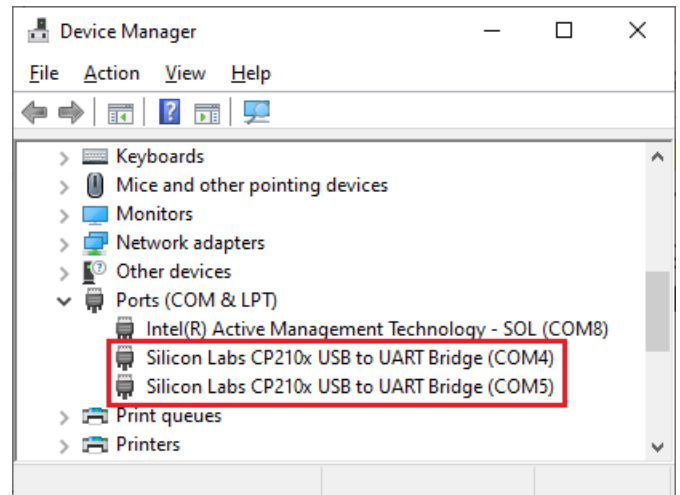


18. Avoid selecting COM ports that are labeled "in use" as these may cause hardware conflicts.



19. Click **OK** to accept the changes as you back out and close windows.

20. Note that more than one **Protocol Adapter** may be installed when more than one instance of the NEM-ALD-W software is needed.



### OPERATION NOTE

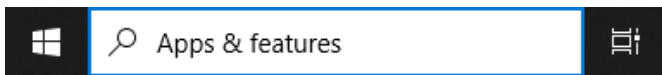
For operation of the **Protocol Adapter** with the **NEM-ALD-W** software, please refer to the document: "[Network Element Manager: NEM-ALD-W User's Manual](#)".

## Software Installation

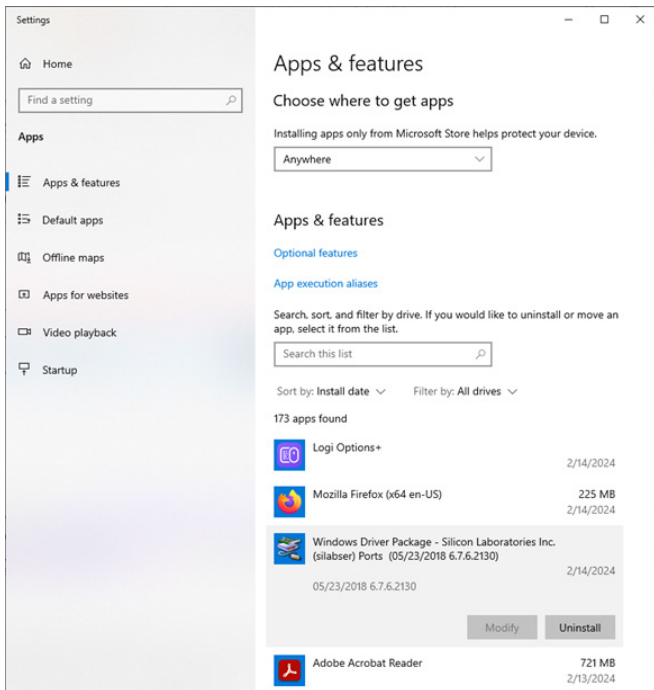
### UNINSTALLING THE DRIVER

To uninstall the driver:

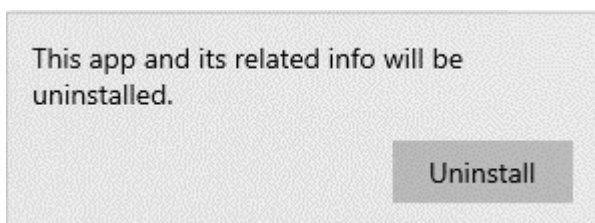
1. In the search window on the Windows task bar, type **"Apps & features"** and press enter.



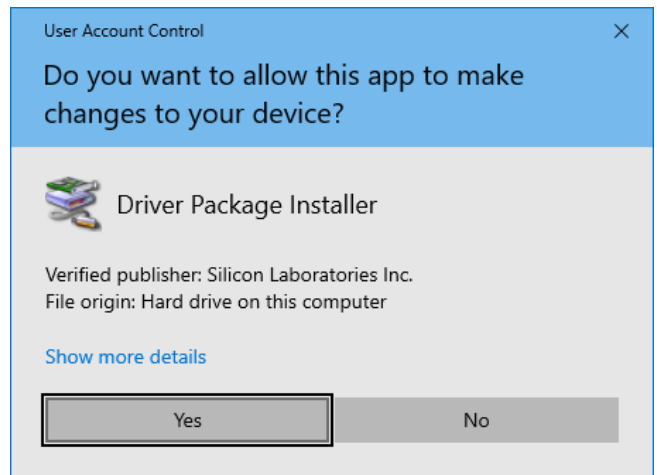
2. In the **Apps & features** window, locate the Silicon Laboratories driver and click **UNINSTALL**.



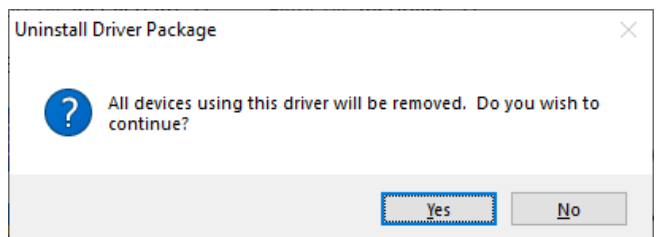
3. And click **UNINSTALL** at the next pop-up:



4. Click **YES** to confirm:



5. Click **YES** to begin the uninstall process.



6. There is no confirmation that the removal is complete. Verify that the item has been removed from the list of **Apps & features**.

# Approved AISG Hardware Control Utilizing a Protocol Adapter

The Amphenol PA-USB/485 Protocol Adapter may be used to control Amphenol AISG compliant ACU (RET) models in the following configuration with no operational issues as long as the appropriate software and hardware options described here are used.

**CAUTION:** The PA-USB/485 Protocol Adapter is NOT to be used as a power source to run AISG compliant TMAs in an operational system. This application is not approved by, nor is it supported by Amphenol Antenna Solutions. While it is possible for the Protocol Adapter to pass AISG control signals and power through the TMA to run the ACUs, using it as a TMA power supply can damage both the TMA and Protocol Adapter.

## SOFTWARE

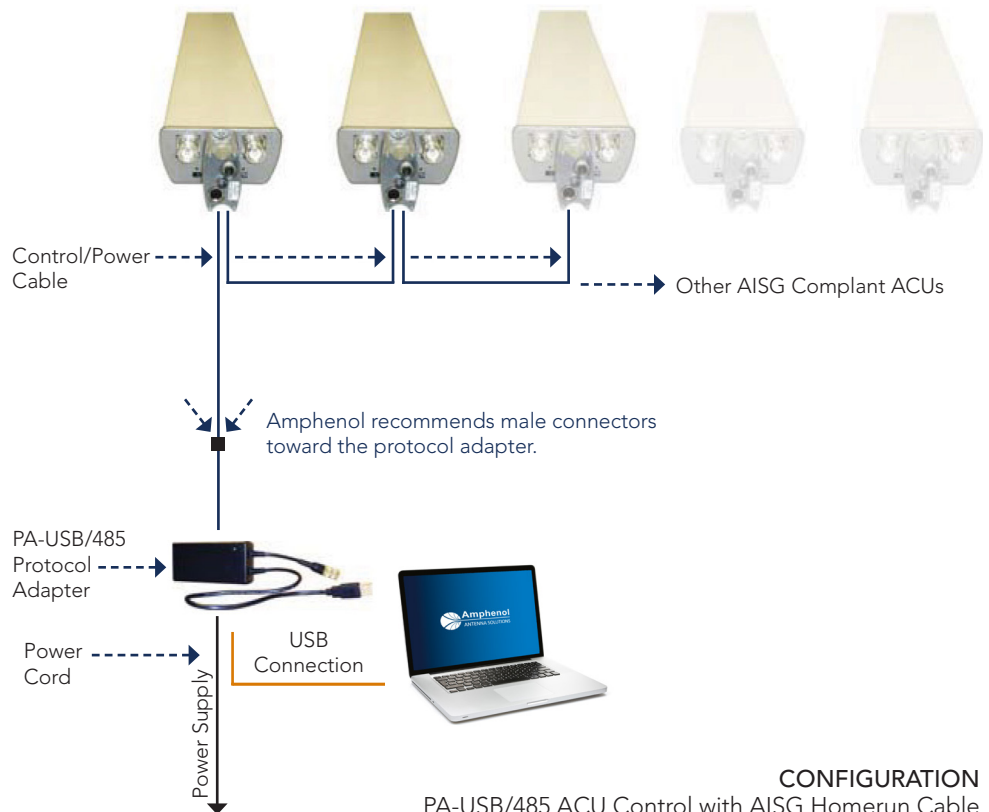
- The correct software to use this configuration is NEM-ALD-W x.x AISG 2.0.
- Appropriate USB to RS485 driver files for the PA-USB/485 Protocol Adapter must also be installed.

## HARDWARE

- PA-USB/485 Protocol Adapter (USB Connection)
- To run AISG 2.0 ACUs when using an AISG homerun cable to controller requires the use of a Protocol Adapter to convert from the PC's USB port to an RS-485 signal.

Connect the male end of the homerun cable directly to the female connector on the Adapter.

The AISG homerun cable female connector attaches to the male connector on the first ACU in the antenna configuration.



**CONFIGURATION**  
PA-USB/485 ACU Control with AISG Homerun Cable

## ORDERING OPTIONS

Select from the following ordering options

MODEL NUMBER	DESCRIPTION
PA-USB/485-1	Protocol Adapter with CA015-1 cord - Europe and Asia
PA-USB/485-2	Protocol Adapter with CA015-2 cord - North America
PA-USB/485-3	Protocol Adapter with CA015-3 cord - Australia and New Zealand