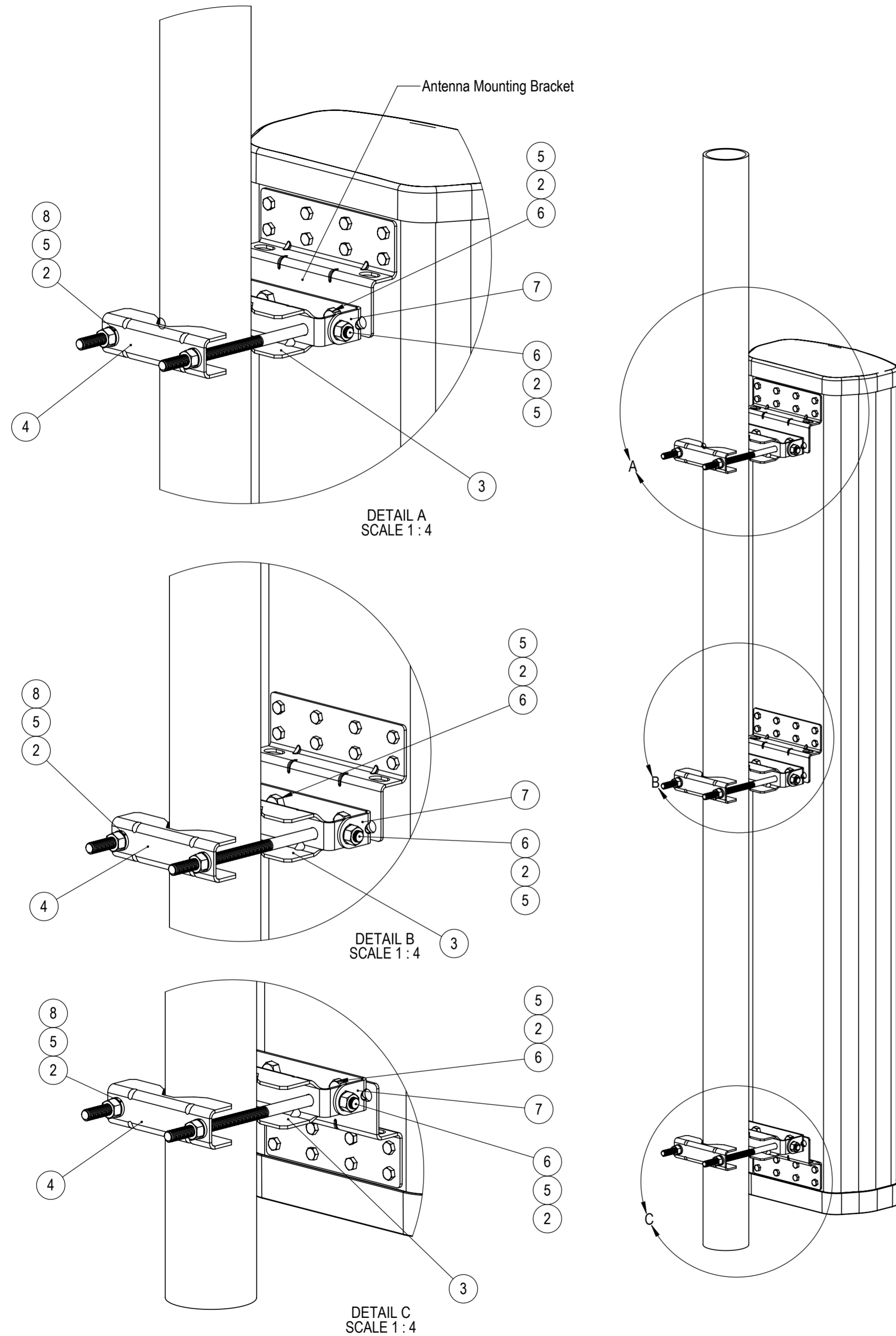


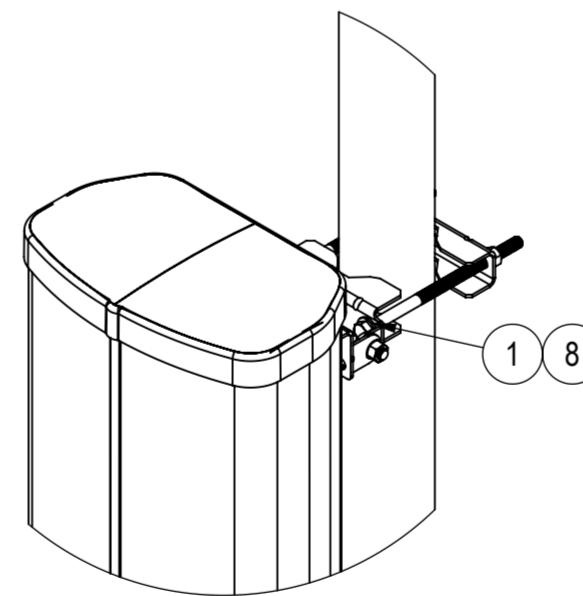
| REVISIONS | | | | |
|-----------|-------------|-----|------|----------|
| REV. | DESCRIPTION | ECN | DATE | REV'D BY |
| | | | | |



MKS10P02
(Instruction sheet I-10055)
3-POINT 6' & 8' HEX / OCT 45° & 65° ANTENNA POLE MOUNT
(A copy of these instructions to be included in each mounting kit box at manufacturer)

Note: Tighten 1/2" hardware to 37 ft lbs (50 Nm) torque except as noted below.

- 1. Attach bracket adapter (7) to mounting brackets of antenna using provided 1/2" Hex Head Cap Screws (6), Lock Washers (2), and Nuts (5).**
- 2. Place 1/2" Washers (1) through 9" bolt (8) and place through pipe grip (3).**
- 3. Raise antenna to pipe. Attach pipe grip (4) to 9" bolt (8) in each assembly using 1/2" Lock Washers (2) and Nuts (5). Tighten 1/2" nuts (5) attaching pipe grip (4) and 9" bolt (8) to 28 ft lbs (38 Nm) torque. Do NOT overtighten. Excessive torque loading will distort pipe grip components.**
- 4. Make all electrical connections and weatherproof with selfamalgamating tape.**



DETAIL D
SCALE 1:8

| ITEM NO. | PART NUMBER | DESCRIPTION | Default/QTY. |
|----------|-------------|-----------------------------------|--------------|
| 1 | 37210012 | WASHER - GALV 1/2 | 6 |
| 2 | 39800613 | WASHER - LOCK GALV 1/2 | 18 |
| 3 | H04422 | PIPE GRIP WITH ELEVATION | 3 |
| 4 | H04421 | PIPE GRIP, REAR | 3 |
| 5 | 37310012 | NUT-HHCS GALV 1/2 | 18 |
| 6 | 8500-352 | SCREW, 1/2-13 X 1IN HHCS | 12 |
| 7 | H05007 | HEX/OCT 65 DEG BRACKET ADAPTOR | 3 |
| 8 | H05115 | BOLT, 1/2-13 x 9" HEAD HEAD, GALV | 6 |

| | | | | |
|--|--|-----------|--|---|
| UNLESS OTHERWISE SPECIFIED DIMENSIONS ARE IN MILLIMETERS ANGULAR: ±1° 0 PLACE: ±0.5 1 PLACE: ±0.25 2 PLACE: ±0.15 INTERPRET DIM AND TOL PER ASME Y14.5-2009 | NAME | DATE | | 1123 INDUSTRIAL DRIVE SW CONOVER, NC 28613 (828) 324-6971 www.amphenol-antennas.com |
| | DRAWN BY: rwarren | 3/27/2017 | | |
| THIRD ANGLE PROJECTION | CHECKED BY: | | TITLE: | POLE MOUNTING KIT, 3 POINT, 6' & 8' HEX/OCT 45° & 65° ANTENNAS |
| | ENG APPR: | | SIZE C DESIGNED USING DWG. NO. MKS10P02 REV 1 | |
| DO NOT SCALE DRAWING | PROPRIETARY AND CONFIDENTIAL THE INFORMATION CONTAINED IN THIS DRAWING IS THE SOLE PROPERTY OF AMPHENOL ANTENNA SOLUTIONS. ANY REPRODUCTION IN PART OR AS A WHOLE WITHOUT THE WRITTEN PERMISSION OF AMPHENOL ANTENNA SOLUTIONS IS PROHIBITED. | | SCALE: NONE WEIGHT (Kg): 21.26 SHEET 1 OF 1 | |