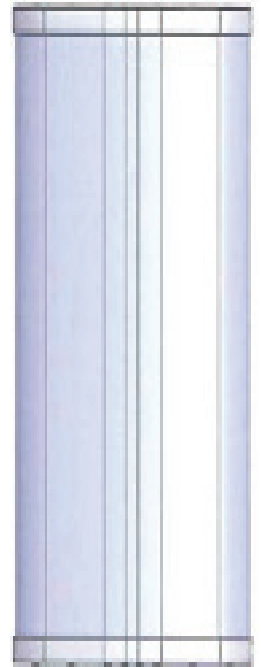


## ETP 1350

Non-Working Antenna Form, 1350 mm

### MECHANICAL SPECIFICATIONS

Length	mm (in)	1350 (53.1)	
Width	mm (in)	432 (17.0)	
Depth	mm (in)	175 (6.8)	
Net Weight - Antenna Only	kg (lbs)	13.5 ± 1 (29.7 ± 2.2)	
Mechanical Distance Between Mounting Points	mm (in)	1100 (43.3)	
Windload (EN 1991-1-4:2005 using Wind Tunnel Coefficients)	Calculation	km/h (mph)	150 (93.2)
	Frontal	N (lbf)	450 (101.1)
	Lateral	N (lbf)	250 (56.2)
	Rearside	N (lbf)	500 (112.4)
Survival Wind Speed	km/h (mph)	200 (124)	
Radome Color	---	Gray RAL7035	
Radome Material	---	Outdoor Fiberglass	
<b>Shipping</b>	Each shipping box will contain one (1) unit of ETP 1350.		
	Shipping Dimensions (Length x Width x Depth)	mm (in)	1600 x 487 x 310 (62.9 x 19.1 x 12.2)
	Shipping Volume	m <sup>3</sup> (ft <sup>3</sup> )	0.242 (8.5)



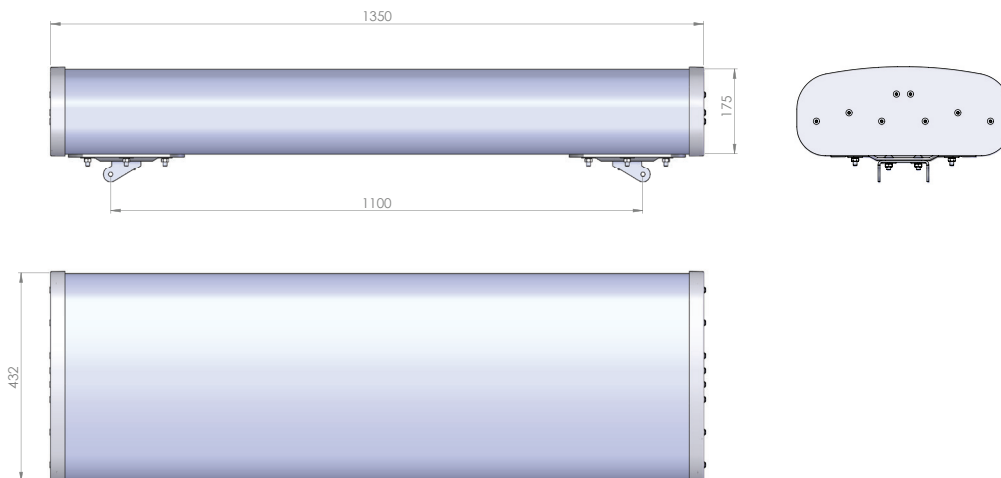
### ACCESSORIES All accessories are ordered separately unless otherwise indicated

ITEM	MODEL NUMBER	WEIGHT
Brackets for pole Ø48 to Ø115 mm (Ø1.9 to Ø4.5 in) <b>delivered as standard</b>	0900181/00	3.4 kg (7.5 lbs)
Brackets for pole Ø70 to Ø150 mm (Ø2.8-Ø5.9 in) <b>optional</b>	0900182/00	3.9 kg (8.6 lbs)
Kit to add mechanical tilt (0° to 10°) to above brackets <b>optional</b>	0900396/00	2.3 kg (5.1 lbs)

### INSTALLATION Please read all installation notes before installing this product.



Always attach the antenna by all mounting points.



Quoted performance parameters are provided to offer typical, peak or range values only and may vary as a result of normal testing, manufacturing and operational conditions. Extreme operational conditions and/or stress on structural supports is beyond our control. Such conditions may result in damage to this product. Improvements to products may be made without notice.