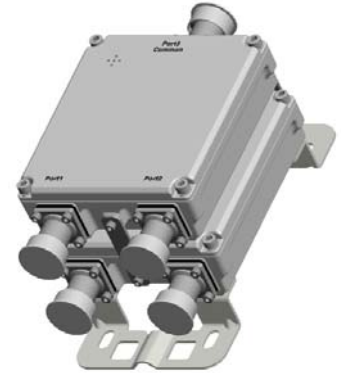


## DPX-77x-JJ

Diplexer | 1695-2200/2300-2700 MHz | Single and Twin Units | Indoor / Outdoor

- Combines the 1700+1800+2100 and 2300 bands into a single output
- Usable at the BTS or antenna end
- Built in lightning protection on all ports
- Available as single or twin unit, with various DC/AISG bypass configurations
- Suitable for indoor or outdoor applications
- Pole or wall mounting



Ordering Options	Single Unit		Twin Unit	
	7/16-DIN Female Connectors	4.3-10 Female Connectors	7/16-DIN Female Connectors	4.3-10 Female Connectors

When ordering replace "x" with correct option for bypass configuration and single or twin unit.

DC/AISG bypass 1695-2200 port	DPX-776-JJ	DPX-776-JJ-43F	DPX-777-JJ	DPX-777-JJ-43F
DC/AISG bypass 2300-2700 port	DPX-774-JJ	DPX-774-JJ-43F	DPX-775-JJ	DPX-775-JJ-43F
Full DC/AISG bypass	DPX-772-JJ	DPX-772-JJ-43F	DPX-773-JJ	DPX-773-JJ-43F
No DC/AISG bypass	DPX-770-JJ	DPX-770-JJ-43F	DPX-771-JJ	DPX-771-JJ-43F

Electrical Characteristics	
1710-2170 Channel (Port 1)	
Frequency Band	1695-2200 MHz
Insertion Loss	< 0.15 dB
VSWR	< 1.25
Isolation	> 50
Input Power	< 300 W
IM3, 2x43 dBm	< -117 dBm
2300-2690 MHz Channel (Port 2)	
Frequency Band	2300-2700 MHz
Insertion Loss	< 0.15 dB
VSWR	< 1.25
Isolation	> 50
Input Power	< 300 W
IM3, 2x43 dBm	< -117 dBm
DC/AISG Transparency	
Bypass Rating	2500 mA (max)
Environmental	
Temperature Range	-40° to +65° C      -40° to +149° F
Ingress Protection	IP67
Lightning Protection	10 kA 8/20 μs
Application	Indoor / Outdoor

Quoted performance parameters are provided to offer typical, peak or range values only and may vary as a result of normal testing, manufacturing and operational conditions. Extreme operational conditions and/or stress on structural supports is beyond our control. Such conditions may result in damage to this product. Improvements to products may be made without notice.

## DPX-77x-JJ

Diplexer | 1695-2200/2300-2700 MHz | Single and Twin Units | Indoor / Outdoor

Mechanical Characteristics			
Connectors		7/16-DIN Female or 4.3-10 Female	
Dimensions (H x W x D) Without Connectors or Mounting Brackets	Single Unit	158.6 x 140 x 48.5 mm	6.2 x 5.5 x 1.9 in
	Twin Unit	158.6 x 140 x 103 mm	6.2 x 5.5 x 4.1 in
Weight	Single Unit	2.4 kg	5.3 lbs
	Twin Unit	4.5 kg	9.9 lbs
Packing Dimensions	Single Unit	320 x 250 x 139 mm	12.6 x 9.8 x 5.5 in
	Twin Unit	340 x 250 x 189 mm	13.4 x 9.8 x 7.4 in
Mounting Options		Description	
Pole / Wall Bracket (included)		Attach to pole diameter Ø40-Ø135 mm (Ø1.57-Ø5.3 in)	

Quoted performance parameters are provided to offer typical, peak or range values only and may vary as a result of normal testing, manufacturing and operational conditions. Extreme operational conditions and/or stress on structural supports is beyond our control. Such conditions may result in damage to this product. Improvements to products may be made without notice.