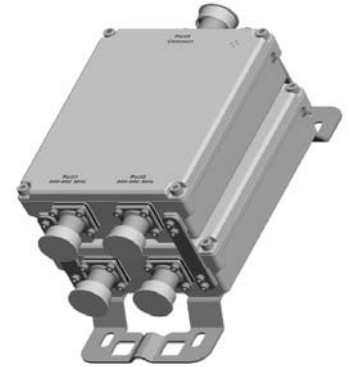


## DPX-13x-JJ

Diplexer | 700+800/900 | Single and Twin Units | Indoor / Outdoor

- Combines the 700+800 and 900 cellular bands into a single output
- Usable at the BTS or antenna end
- Built in lightning protection on all ports
- Available as single or twin unit, with various DC/AISG bypass configurations
- Suitable for indoor or outdoor applications
- Pole or wall mounting



Ordering Options	Single Unit		Twin Unit	
	7/16-DIN Female Connectors	4.3-10 Female Connectors	7/16-DIN Female Connectors	4.3/10 Female Connectors

When ordering replace "x" with correct option for bypass configuration and single or twin unit.

DC/AISG bypass low band	DPX-130-JJ	DPX-130-JJ-43F	DPX-131-JJ	DPX-131-JJ-43F
DC/AISG bypass high band	DPX-132-JJ	DPX-132-JJ-43F	DPX-133-JJ	DPX-133-JJ-43F
Full DC/AISG bypass	DPX-134-JJ	DPX-134-JJ-43F	DPX-135-JJ	DPX-135-JJ-43F

Electrical Characteristics	
<b>700+800 Channel (Low Band)</b>	
Frequency Band	690-862 MHz
Insertion Loss	< 0.4 dB; 0.2 dB typical
Isolation	> 45 dB
VSWR	< 1.25
Continuous Average Power	< 200 W
IM3 (2x43 dBm)	< -117 dBm
<b>900 Channel (High Band)</b>	
Frequency Band	880-960 MHz
Insertion Loss	< 0.4 dB; 0.2 dB typical
Isolation	> 45 dB
VSWR	< 1.25
Continuous Average Power	< 200 W
IM3 (2x43 dBm)	< -117 dBm
<b>DC/AISG Transparency</b>	
Bypass Rating	2500 mA (max)
<b>Environmental</b>	
Temperature Range	-40° to +65° C      -40° to +149° F
Ingress Protection	IP67
Lightning Protection	10 kA 8/20 μs
Application	Indoor / Outdoor

Quoted performance parameters are provided to offer typical, peak or range values only and may vary as a result of normal testing, manufacturing and operational conditions. Extreme operational conditions and/or stress on structural supports is beyond our control. Such conditions may result in damage to this product. Improvements to products may be made without notice.

## DPX-13x-JJ

Diplexer | 700+800/900 | Single and Twin Units | Indoor / Outdoor

Mechanical Characteristics			
Connectors		7/16-DIN Female or 4.3-10 Female	
Dimensions (H x W x D) Without Connectors or Mounting Brackets	Single Unit	210 x 155 x 63 mm	8.3 x 6.1 x 2.5 in
	Twin Unit	210 x 155 x 128 mm	8.3 x 6.1 x 5.0 in
Weight	Single Unit	3.0 kg	6.6 lbs
	Twin Unit	6.0 kg	13.2 lbs
Packing Dimensions	Single Unit	392 x 243 x 150 mm	15.4 x 9.6 x 5.9 in
	Twin Unit	392 x 243 x 210 mm	15.4 x 9.6 x 8.3 in
Mounting Options		Description	
Pole / Wall Bracket (included)		Attach to pole diameter Ø40-Ø135 mm (Ø1.57-Ø5.3 in)	

Quoted performance parameters are provided to offer typical, peak or range values only and may vary as a result of normal testing, manufacturing and operational conditions. Extreme operational conditions and/or stress on structural supports is beyond our control. Such conditions may result in damage to this product. Improvements to products may be made without notice.