

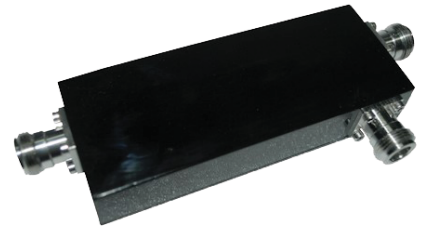
This model was previously released as ADC-xx-WBM-LP-NF-CC.

DC-xxML-NF-CC

Directional Coupler | N Female

Features

- Low VSWR
- Low PIM
- Low insertion loss
- High power capacity
- Performance stability



Ordering Options										
When ordering, replace the "xx" in the model number with the options listed below.										
Coupling Value (xx)	05	06	07	08	10	13	15	20	25	30
Electrical Characteristics										
Frequency Range	698-2700 MHz									
Coupling	5 dB	6 dB	7 dB	8 dB	10 dB	13 dB	15 dB	20 dB	25 dB	30 dB
Insertion Loss	≤ 2.0 dB	≤ 1.7 dB	≤ 1.6 dB	≤ 1.1 dB	≤ 0.7 dB	≤ 0.5 dB	≤ 0.4 dB	≤ 0.2 dB	≤ 0.2 dB	≤ 0.2 dB
VSWR	≤ 1.2									
Power Rating	200 W									
Peak Power (max)	1 kW									
PIM3 (2x43 dBm)	≤ -153 dBc									
Coupling Tolerance	±0.8 dB	±0.8 dB	±0.8 dB	±0.8 dB	±1.0 dB	±1.0 dB	±1.0 dB	±1.0 dB	±1.2 dB	±1.2 dB
Isolation	≥ 25 dB	≥ 26 dB	≥ 27 dB	≥ 28 dB	≥ 30 dB	≥ 33 dB	≥ 35 dB	≥ 40 dB	≥ 45 dB	≥ 50 dB
Impedance	50Ω									
Mechanical Characteristics										
Dimensions	Refer to Diagram Shown on Next Page									
Plating	Inner Contact	Silver								
	Outer Trimetal	Trimetal								
Connector	N-Female									
Environmental Characteristics										
Operating Temperature	-30° C to +75° C (-40° F to +185° F)									
Relative Humidity	Up to 95%									
Application	Indoor / Outdoor									
Certification	IP65									
RoHS Compliant	Yes									

Quoted performance parameters are provided to offer typical, peak or range values only and may vary as a result of normal testing, manufacturing and operational conditions. Extreme operational conditions and/or stress on structural supports is beyond our control. Such conditions may result in damage to this product. Improvements to products may be made without notice.

DC-xxML-NF-CC

Directional Coupler | N Female

Dimensions

