

## CX085X13x00

Single Band | Panel Antenna | X-Pol | 85° | 14.1 dBi | Variable Tilt

- Single band, X-Pol, variable tilt, panel antenna
- Part of Amphenol's UNIVERSAL series of antennas featuring consistent form factors for future-proofing
- Patented internal RET actuator adds no additional length to the antenna
- Features an adjustable mounting bracket channel for custom mounting in any situation






Ordering Options	Model Number		
When ordering, replace "x" in the model number with one of the options listed below.			
Manual Electrical Tilt	CX085X13M00		
Remote Electrical Tilt AISG v2.0 / 3GPP	CX085X13G00		
Mounting bracket kits and other accessories are ordered separately.			
Electrical Characteristics	696-960 MHz		
Frequency Bands	696-806 MHz	806-960 MHz	
Polarization	±45°		
Horizontal Beamwidth	85°	80°	
Vertical Beamwidth	19.0°	16.0°	
Gain	13.3 dBi	14.1 dBi	
Electrical Downtilt	0-14°		
Impedance	50Ω		
VSWR	< 1.5:1		
Upper Sidelobe Suppression	> 18 dB Typical		
Front-to-Back Ratio	> 25 dB		
In-Band Isolation	> 20 dB		
IM3 (2x20W carrier)	< -153 dBc		
Input Power	(2x) 500 W		
Total Number of Connectors	Antenna has 2 connectors located at the bottom		
Connectors Type	7/16-DIN Female		
Diplexed	No		
Lightning Protection	Direct Ground		
Operating Temperature	-40° to +60° C (-40° to +140° F)		
Mechanical Characteristics			
Dimensions (Length x Width x Depth)	1298 x 305 x 180 mm	51.1 x 12.0 x 7.1 in	
Weight without Mounting Brackets: MET	9.5 kg	21 lbs	
Weight without Mounting Brackets: RET	9.8 kg	21.7 lbs	
Survival Wind Speed	241 km/hr	150 mph	
Wind Loads (160 km/hr or 100 mph)	Front	480 N	108 lbf
	Side	284 N	64 lbf

Quoted performance parameters are provided to offer typical, peak or range values only and may vary as a result of normal testing, manufacturing and operational conditions. Extreme operational conditions and/or stress on structural supports is beyond our control. Such conditions may result in damage to this product. Improvements to products may be made without notice.

# CX085X13x00

Single Band | Panel Antenna | X-Pol | 85° | 13.5 dBi | Variable Tilt

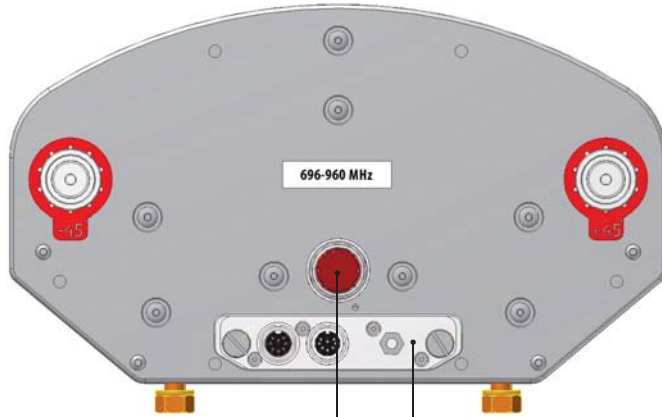
Electrical Downtilt Control				
Electrical downtilt for each band can be controlled separately. Tilt indicator(s) are covered by removable transparent cap(s).				
Manual Electrical Tilt (MET) Control	A colored knob at the end of the tilt indicator allows change of the tilt without need of a tool. The knob color is identical to the corresponding connector ring color. To access the knob, remove the cap by turning it counter-clockwise. It is re-installed by opposite rotation. <b>Do not remove the transparent cap(s) from the antenna.</b>			
Remote Electrical Tilt (RET) Control	The remote control of the electrical tilt is managed by a Multi-Device Control Unit (MDCU) inserted in the bottom of the antenna. A single module individually controls the tilt of each band (no need for daisy chain cables between the bands). This module does not add any additional length to the antenna. For RET control, the transparent caps must be in place and locked. The tilt angle indicators always remain visible and the antenna still has manual tilt control (manual override). <b>Do not remove the transparent cap(s) from the antenna.</b>			
Important Installation Instructions		In order to operate RET control, the transparent caps covering the tilt adjustment indicators must be engaged and locked. Do not cut them from the antenna.		
		Do not install the antenna with the connectors facing upward.		
Mounting Options	Part Number	Image	Fits Pipe Diameter	Weight
All mounting bracket kits are ordered separately unless otherwise indicated. Select from the options listed below.				
2-Point Mounting Bracket Kit	MKS09P01		50-115 mm 2.0-4.5 in	2.7 kg 6 lbs
2-Point Mounting & Downtilt Bracket Kit	MKS09T01		50-115 mm 2.0-4.5 in	4.5 kg 10 lbs

Quoted performance parameters are provided to offer typical, peak or range values only and may vary as a result of normal testing, manufacturing and operational conditions. Extreme operational conditions and/or stress on structural supports is beyond our control. Such conditions may result in damage to this product. Improvements to products may be made without notice.

CX085X13x00

Single Band | Panel Antenna | X-Pol | 85° | 13.5 dBi | Variable Tilt

Bottom View of Antenna



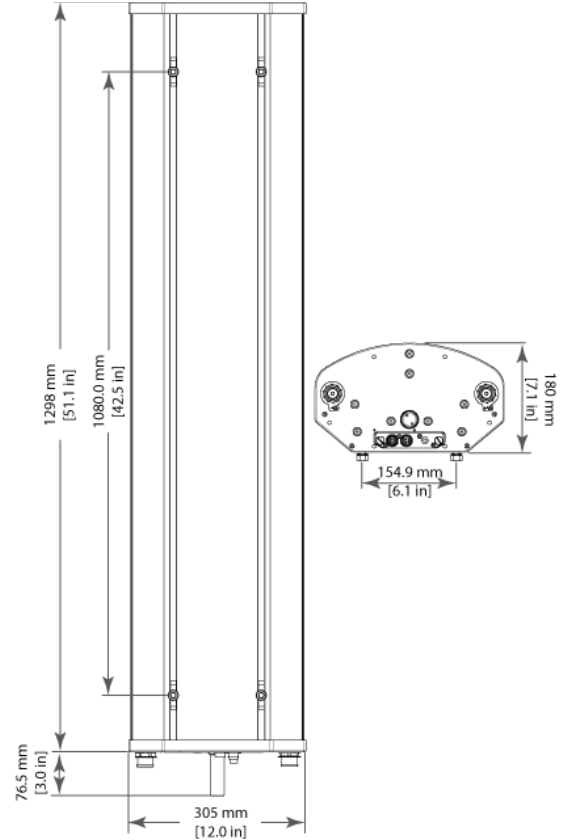
Location of the MDCU for RET Control

Tilt indicator covered by transparent cap.  
Manual adjustment is accessed by removing the cap.  
Knob color is the same as the connectors.



In order to operate RET control, the transparent cap covering the tilt adjustment indicator must be engaged and locked. Do not cut it from the antenna.

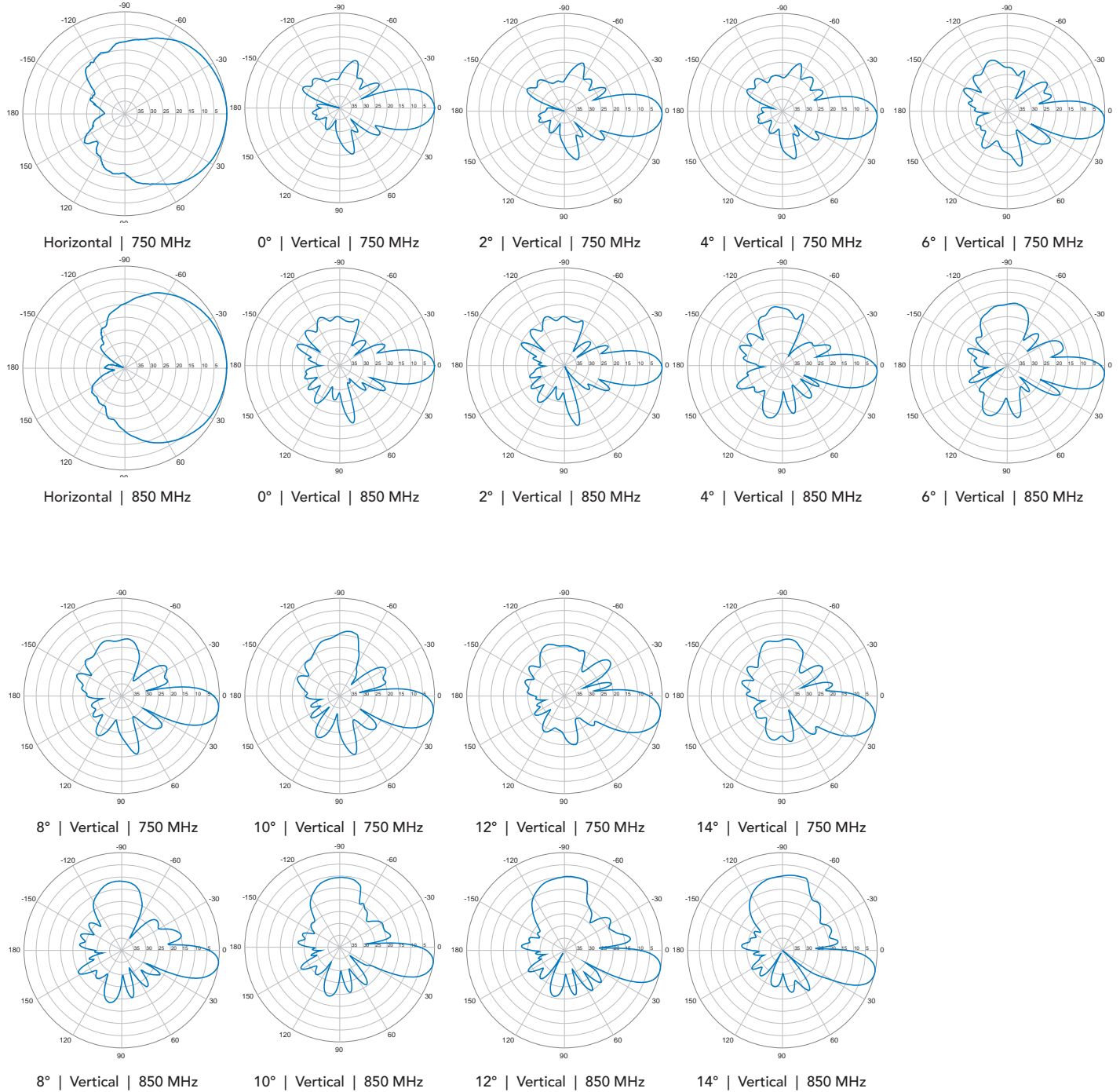
Dimensions



**CX085X13x00**

Single Band | Panel Antenna | X-Pol | 85° | 13.5 dBi | Variable Tilt

696-960 MHz



Quoted performance parameters are provided to offer typical, peak or range values only and may vary as a result of normal testing, manufacturing and operational conditions. Extreme operational conditions and/or stress on structural supports is beyond our control. Such conditions may result in damage to this product. Improvements to products may be made without notice.