

## CX045X19x00

Single Band | Panel Antenna | X-Pol | 45° | 16.2 dBi | Variable Tilt

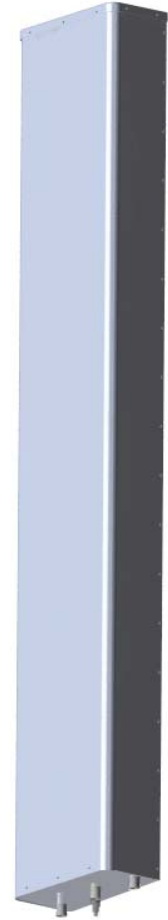
- Single band, X-Pol, variable tilt, panel antenna
- Patented internal RET actuator adds no additional length to the antenna

Ordering Options	Model Number
When ordering, replace "x" in the model number with one of the options listed below.	
Manual Electrical Tilt	CX045X19M00
Remote Electrical Tilt AISG v2.0 / 3GPP	CX045X19G00

Mounting bracket kits and other accessories are ordered separately.

Electrical Characteristics	696-960 MHz	
Frequency Bands	696-806 MHz	806-960 MHz
Polarization	±45°	
Horizontal Beamwidth	45°	40°
Vertical Beamwidth	15.6°	13.7°
Gain	15.3 dBi	16.2 dBi
Electrical Downtilt	0-12°	
Impedance	50Ω	
VSWR	< 1.5:1	
Upper Sidelobe Suppression	> 17 dB Typical	
Front-to-Back Ratio	> 27 dB	
In-Band Isolation	> 25 dB	
Isolation Between Ports	> 30 dB	
IM3 (2x20W carrier)	< -153 dBc	
Input Power	(2x) 500 W	
Total Number of Connectors	Antenna has 2 connectors located at the bottom	
Connectors Type	7/16-DIN Female	
Diplexed	No	
Lightning Protection	Direct Ground	
Operating Temperature	-40° to +60° C (-40° to +140° F)	


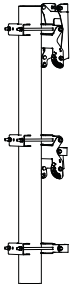
Mechanical Characteristics			
Dimensions (Length x Width x Depth)		1780 x 397 x 187 mm	70.1 x 15.6 x 7.4 in
Weight	Antenna Only	18.1 kg	40.0 lbs
	Antenna with Mounting Bracket Kit <b>36210008</b>	25.0 kg	55.2 lbs
Survival Wind Speed		241 km/hr	150 mph
Wind Loads (160 km/hr or 100 mph)	Front	907 N	204 lbf
	Side	420 N	94 lbf



Quoted performance parameters are provided to offer typical, peak or range values only and may vary as a result of normal testing, manufacturing and operational conditions. Extreme operational conditions and/or stress on structural supports is beyond our control. Such conditions may result in damage to this product. Improvements to products may be made without notice.

# CX045X19x00

Single Band | Panel Antenna | X-Pol | 45° | 16.2 dBi | Variable Tilt

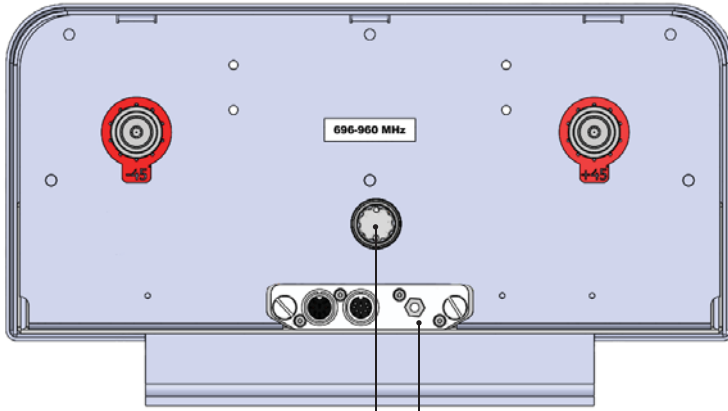
Electrical Downtilt Control				
Electrical downtilt for each band can be controlled separately. Tilt indicator(s) are covered by removable transparent cap(s).				
Manual Electrical Tilt (MET) Control	A colored knob at the end of the tilt indicator allows change of the tilt without need of a tool. The knob color is identical to the corresponding connector ring color. To access the knob, remove the cap by turning it counter-clockwise. It is re-installed by opposite rotation. <b>Do not remove the transparent cap(s) from the antenna.</b>			
Remote Electrical Tilt (RET) Control	The remote control of the electrical tilt is managed by a Multi-Device Control Unit (MDCU) inserted in the bottom of the antenna. A single module individually controls the tilt of each band (no need for daisy chain cables between the bands). This module does not add any additional length to the antenna. For RET control, the transparent caps must be in place and locked. The tilt angle indicators always remain visible and the antenna still has manual tilt control (manual override). <b>Do not remove the transparent cap(s) from the antenna.</b>			
Important Installation Instructions		In order to operate RET control, the transparent caps covering the tilt adjustment indicators must be engaged and locked. Do not cut them from the antenna.		
		Do not install the antenna with the connectors facing upward.		
Mounting Options	Part Number	Image	Fits Pipe Diameter	Weight
All mounting bracket kits are ordered separately unless otherwise indicated. Select from the options listed below.				
3-Point Mounting and Downtilt Bracket Kit	36210008		40-115 mm 1.6-4.5 in	6.9 kg 15.2 lbs

Quoted performance parameters are provided to offer typical, peak or range values only and may vary as a result of normal testing, manufacturing and operational conditions. Extreme operational conditions and/or stress on structural supports is beyond our control. Such conditions may result in damage to this product. Improvements to products may be made without notice.

CX045X19x00

Single Band | Panel Antenna | X-Pol | 45° | 16.2 dBi | Variable Tilt

Bottom View of Antenna



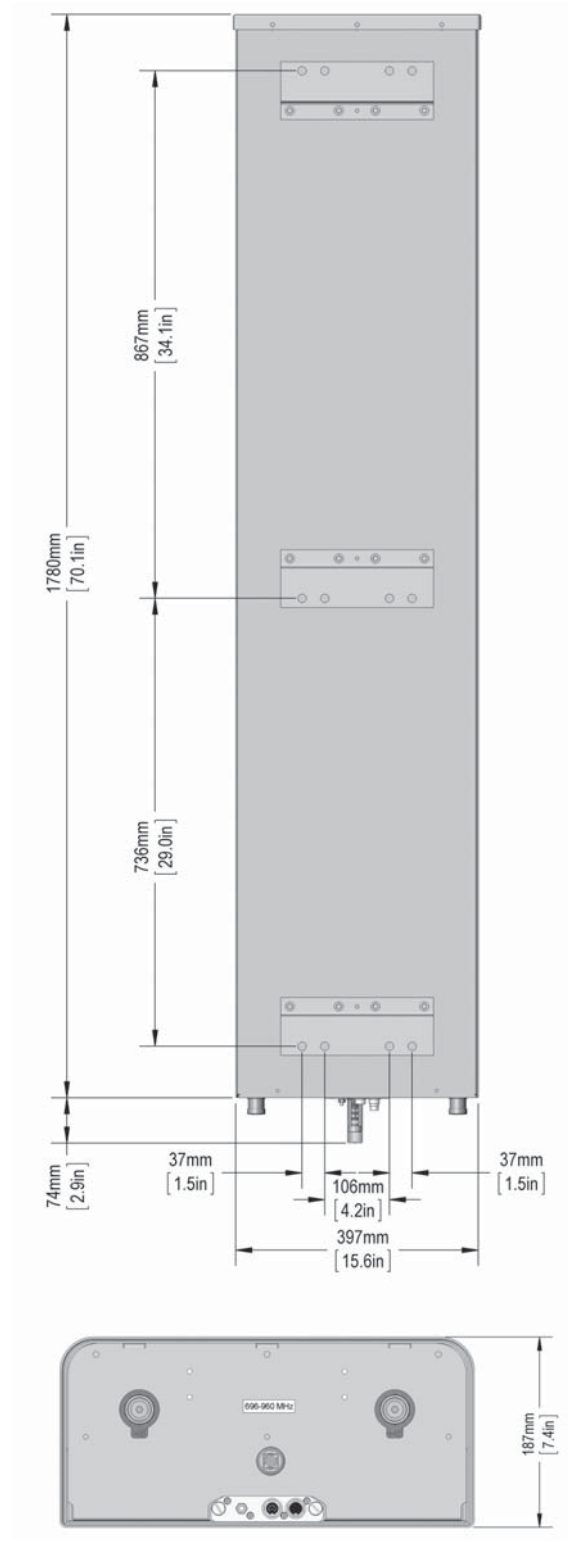
Location of the MDCU  
for RET Control

Tilt indicator covered by transparent cap.  
Manual adjustment is accessed by removing the cap.  
Knob color is the same as the connectors.



In order to operate RET control, the transparent cap covering the tilt adjustment indicator must be engaged and locked. Do not cut it from the antenna.

Dimensions

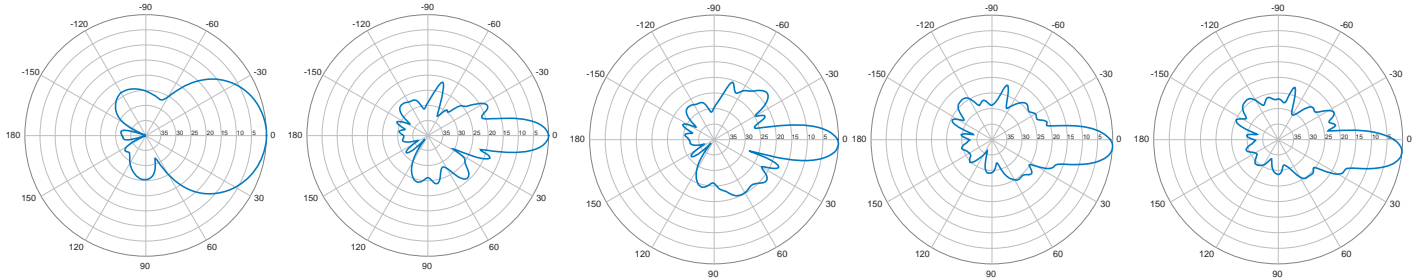


Quoted performance parameters are provided to offer typical, peak or range values only and may vary as a result of normal testing, manufacturing and operational conditions. Extreme operational conditions and/or stress on structural supports is beyond our control. Such conditions may result in damage to this product. Improvements to products may be made without notice.

**CX045X19x00**

Single Band | Panel Antenna | X-Pol | 45° | 16.2 dBi | Variable Tilt

696-960 MHz



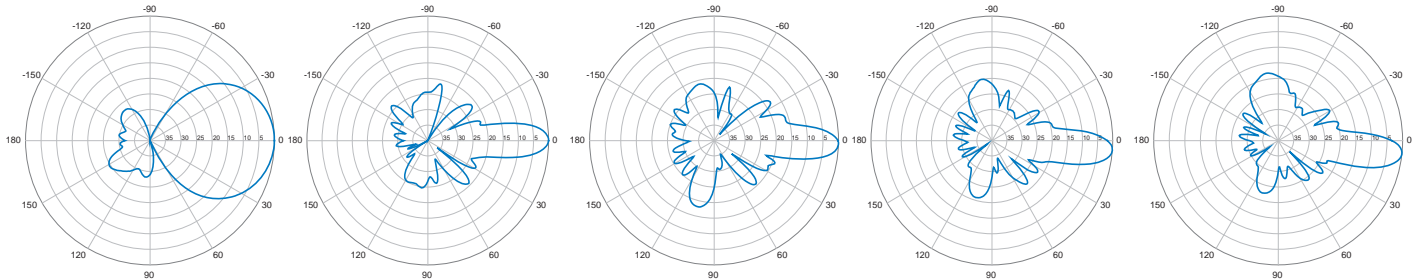
Horizontal | 750 MHz

0° | Vertical | 750 MHz

2° | Vertical | 750 MHz

4° | Vertical | 750 MHz

6° | Vertical | 750 MHz



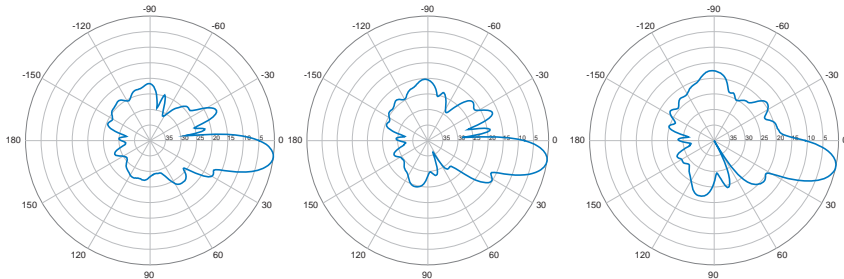
Horizontal | 850 MHz

0° | Vertical | 850 MHz

2° | Vertical | 850 MHz

4° | Vertical | 850 MHz

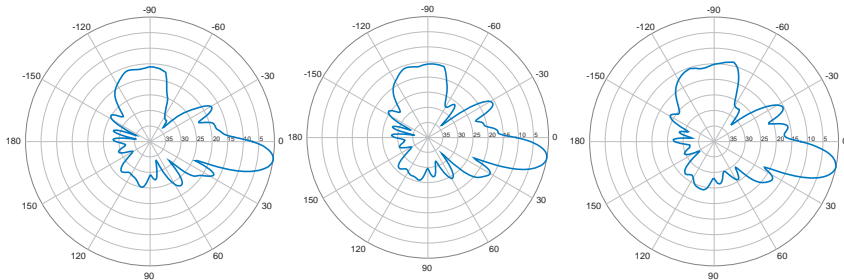
6° | Vertical | 850 MHz



8° | Vertical | 750 MHz

10° | Vertical | 750 MHz

12° | Vertical | 750 MHz



8° | Vertical | 850 MHz

10° | Vertical | 850 MHz

12° | Vertical | 850 MHz

Quoted performance parameters are provided to offer typical, peak or range values only and may vary as a result of normal testing, manufacturing and operational conditions. Extreme operational conditions and/or stress on structural supports is beyond our control. Such conditions may result in damage to this product. Improvements to products may be made without notice.