

# CUUB180X06Fxyz0

TRI BAND | 180° PEANUT-SHAPE | CANISTER ANTENNA | X-POL | FIXED TILT | 610 MM (24.0 IN)

## Features

- 180° Peanut-Shape configuration with 6 connectors
- Ideal for Small Cell / DAS applications
- Available with 4.3-10 or 7/16-DIN connectors
- Four unique mounting options
- Available for order with a grey, brown or black radome



## Connector Description

The antenna has 6 connectors located at the bottom.

Low Band	■ R1	696-960 MHz	(2x) 4.3-10 or 7/16-DIN Female
Mid Band #1	■ Y1	1695-2700 MHz	(2x) 4.3-10 or 7/16-DIN Female
Mid Band #2	■ Y2	1695-2700 MHz	(2x) 4.3-10 or 7/16-DIN Female

Electrical Characteristics	■ R1	■ Y1 ■ Y2
----------------------------	------	-----------

Electrical specifications are shown for Sector #1. Back-to-Back antennas are combined to form azimuth peanut pattern shape.

Frequency Bands (MHz)	696-960 MHz		(2x) 1695-2700 MHz			
	696-806	806-960	1695-1880	1850-1990	1920-2200	2200-2700
Polarization	±45°		±45°			
Horizontal Beamwidth	75° ±1.9°	86° ±15.9°	65° ±11.7°	75° ±11.7°	76° ±10.7°	57° ±10.1°
Vertical Beamwidth	41.8° ±2.2°	38.7° ±3.6°	18.3° ±1.9°	16.8° ±1.1°	16.1° ±1.4°	12.8° ±1.3°
Gain (dBi)	6.9 ± 0.5	6.6 ± 0.9	10.0 ± 0.9	10.1 ± 0.9	10.3 ± 1.0	12.02 ± 0.8
Electrical Downtilt (°)	(x) 0, 5		(y) 0, 6			
Impedance	50Ω		50Ω			
VSWR	≤ 1.5:1		≤ 1.5:1			
Upper Sidelobe Suppression	N/A		> 15 dB			
Isolation Between Ports	20 dB		22 dB			
IM3 (2x20W carrier)	< -153 dBc		< -153 dBc			
Input Power	(2x) 500 W		(4x) 300 W			
Diplexed	No					
Number of Sectors, Sector Spacing and/or Pattern Shape	180° Peanut-Shape					
Lightning Protection	Direct Ground					

## Mechanical Characteristics

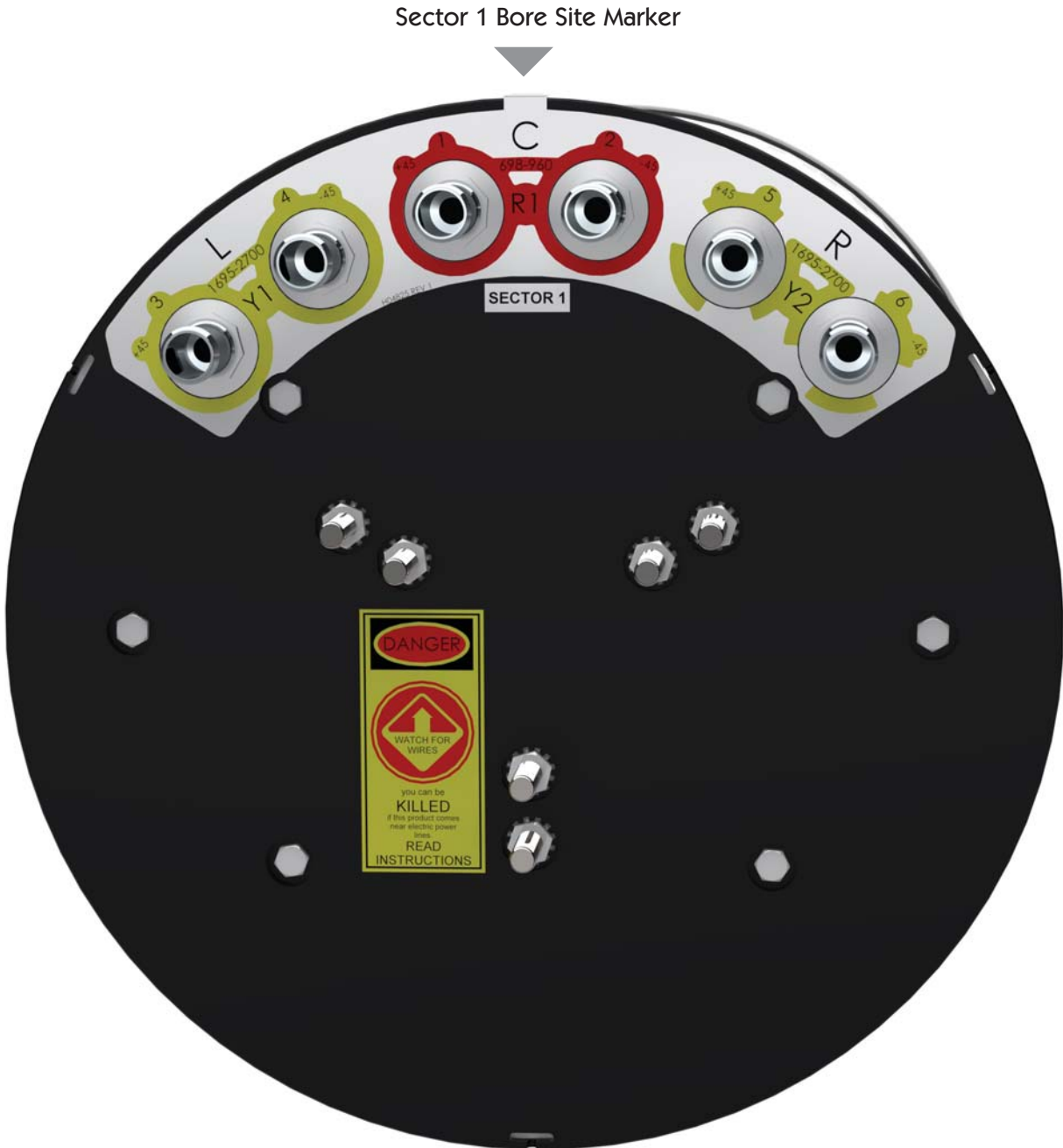
Antenna Dimensions (Height x Diameter)	610 x 371 mm	24.0 x 14.6 in
Weight without Mounting Bracket Kit	12.7 kg	28.0 lbs
Antenna Volume	0.07 m <sup>3</sup>	2.3 ft <sup>3</sup>
Survival Wind Speed	241 km/hr	150 mph
Wind Area	0.22 m <sup>2</sup>	2.4 ft <sup>2</sup>
Wind Load (160 km/hr or 100 mph)	191 N	43 lbf

Quoted performance parameters are provided to offer typical, peak or range values only and may vary as a result of normal testing, manufacturing and operational conditions. Extreme operational conditions and/or stress on structural supports is beyond our control. Such conditions may result in damage to this product. Improvements to products may be made without notice.

## CUUB180X06Fxyz0

TRI BAND | 180° PEANUT-SHAPE | CANISTER ANTENNA | X-POL | FIXED TILT | 610 MM (24.0 IN)

### Bottom View - Labeling

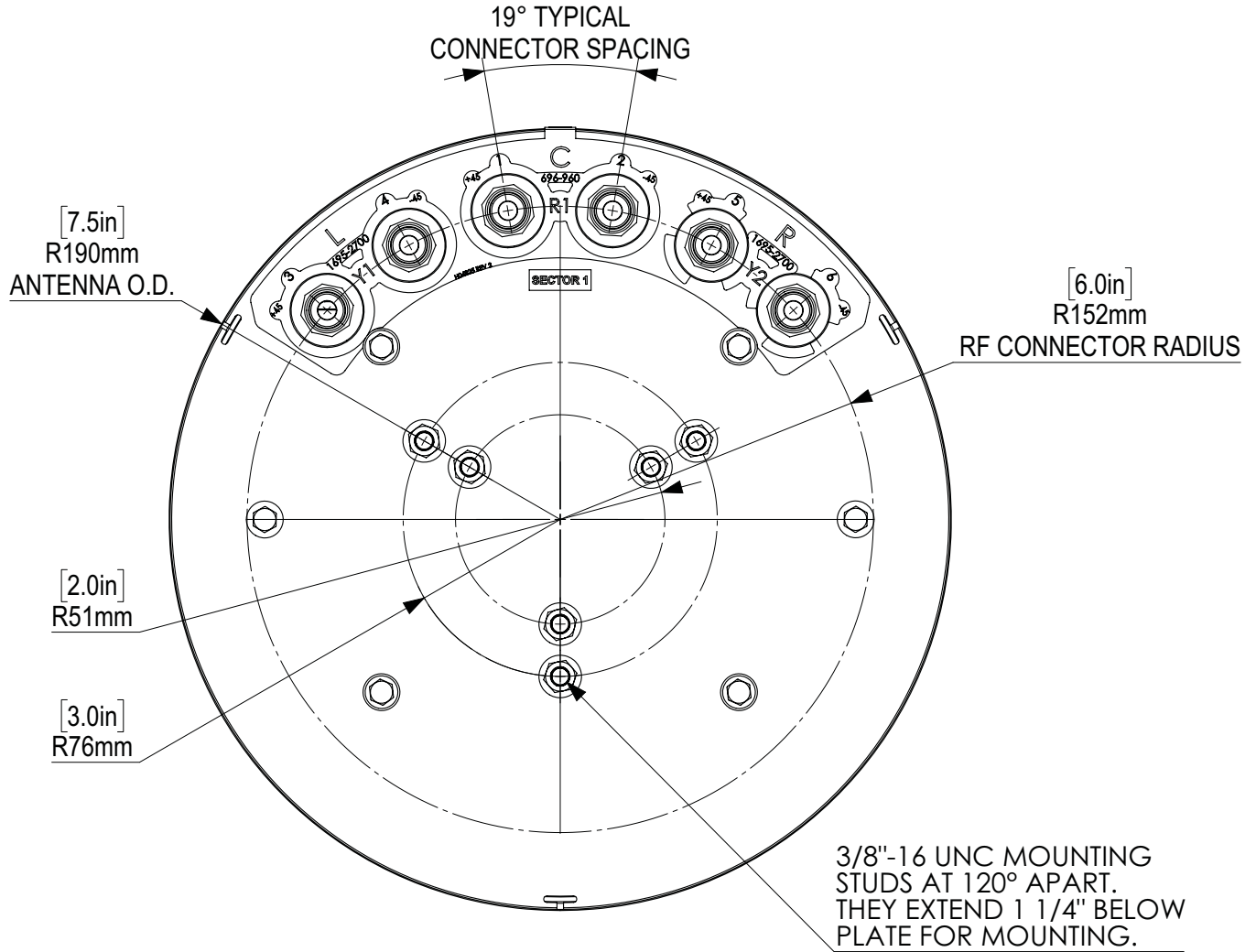


Quoted performance parameters are provided to offer typical, peak or range values only and may vary as a result of normal testing, manufacturing and operational conditions. Extreme operational conditions and/or stress on structural supports is beyond our control. Such conditions may result in damage to this product. Improvements to products may be made without notice.

CUUB180X06Fxyz0

TRI BAND | 180° PEANUT-SHAPE | CANISTER ANTENNA | X-POL | FIXED TILT | 610 MM (24.0 IN)

Bottom View - Connector Diagram



Quoted performance parameters are provided to offer typical, peak or range values only and may vary as a result of normal testing, manufacturing and operational conditions. Extreme operational conditions and/or stress on structural supports is beyond our control. Such conditions may result in damage to this product. Improvements to products may be made without notice.

## CUUB180X06Fxyz0

TRI BAND | 180° PEANUT-SHAPE | CANISTER ANTENNA | X-POL | FIXED TILT | 610 MM (24.0 IN)

### Ordering Options

When ordering, select the Radome Color, Degree of Electrical Downtilt for the Low (x) and Mid Bands (y) and the Connector Type (z).

Radome Color	Electrical Downtilt Degree		Connector Type (z)	
	Low Band ■ R1 (x)	Mid Band ■ Y1 ■ Y2 (y)	4.3-10 Female	7/16-DIN Female
Grey Pantone 420 C	0°	0°	CUUB180X06F00s0	CUUB180X06F00D0
	0°	6°	CUUB180X06F06s0	CUUB180X06F06D0
	5°	0°	CUUB180X06F50s0	CUUB180X06F50D0
	5°	6°	CUUB180X06F56s0	CUUB180X06F56D0
Brown Pantone 476 C	0°	0°	CUUB180X06F00s0BR	CUUB180X06F00D0BR
	0°	6°	CUUB180X06F06s0BR	CUUB180X06F06D0BR
	5°	0°	CUUB180X06F50s0BR	CUUB180X06F50D0BR
	5°	6°	CUUB180X06F56s0BR	CUUB180X06F56D0BR
Black RAL 9011	0°	0°	CUUB180X06F00s0BK	CUUB180X06F00D0BK
	0°	6°	CUUB180X06F06s0BK	CUUB180X06F06D0BK
	5°	0°	CUUB180X06F50s0BK	CUUB180X06F50D0BK
	5°	6°	CUUB180X06F56s0BK	CUUB180X06F56D0BK

Quoted performance parameters are provided to offer typical, peak or range values only and may vary as a result of normal testing, manufacturing and operational conditions. Extreme operational conditions and/or stress on structural supports is beyond our control. Such conditions may result in damage to this product. Improvements to products may be made without notice.

# CUUB180X06Fxyz0

TRI BAND | 180° PEANUT-SHAPE | CANISTER ANTENNA | X-POL | FIXED TILT | 610 MM (24.0 IN)

## Mounting Kits

This antenna can be mounted using any of the following mounting kits. Mounting kits must be ordered separately.

Side Mounting Bracket Kit	Top Mounting Bracket Kit	Utility Pole Mounting Bracket Kit	Wide Diameter Pole Top Mounting Bracket Kit
CWT-MKS-SIDE	CWT-MKS-TOP	WB3X-MKS-01	CWT-MKS-BASE-xx
			

Quoted performance parameters are provided to offer typical, peak or range values only and may vary as a result of normal testing, manufacturing and operational conditions. Extreme operational conditions and/or stress on structural supports is beyond our control. Such conditions may result in damage to this product. Improvements to products may be made without notice.