

ACROSS THE WORLD.
AROUND THE CORNER.



VENUES & PRIVATE NETWORKS

ANTENNA SELECTION GUIDE

AMPHENOL ANTENNA SOLUTIONS

ANTENNAS FOR VENUES & PRIVATE NETWORKS

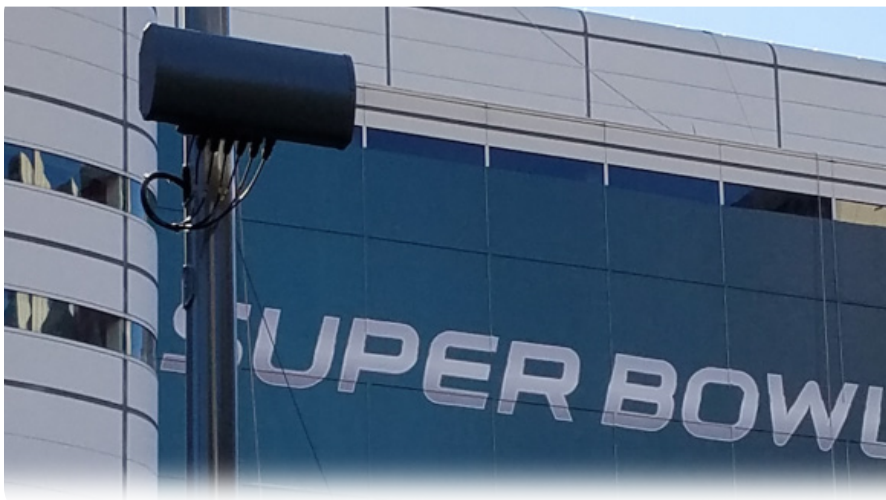
A large selection of high gain, high port count panel antennas delivering optimal coverage across the full sub-6 spectrum, including the entire n77 band. Boost coverage, densify networks and/or support neutral-host deployments.

IDEAL FOR

- Venues, stadiums, convention centers, campuses, airports, hotels and buildings of all types and sizes



Select from 33°, 45° and 65° horizontal beamwidths for precise, directed coverage.



MULTI-PORT, MULTI-TECHNOLOGY

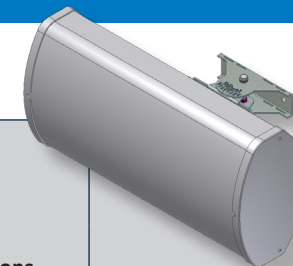
Amphenol VENUE ANTENNAS are designed to meet all spectrum needs from 600 MHz to 5 GHz. These lightweight and versatile 5G antennas support 4x4 MIMO technology and can accommodate multiple operators for deployment flexibility.



THE AMPHENOL ADVANTAGE

- High gain solutions with optimized coverage between the mid and n77 band
- Increased n77 gain compensates for higher propagation losses
- Improves spectral efficiency by reducing handover and increasing channel capacity
- Optimized by band to provide best-in-class MIMO performance in the desired coverage area for all bands, results in maximum spectral efficiency
- C-BAND PIM at -153 dBc
- High port counts with a high number dedicated to C-BAND
- Designed with multiple columns of elements to provide azimuth side lobe suppression and reduce interference with adjacent antennas or sectors
- Compact, lightweight and easy to deploy





ANTENNA PORTFOLIO

Height	Azimuth Beamwidth	Total Port Count	Model Number	Port Count by Frequency						Max Gain by Frequency (dBi)					Tilt Options by Frequency (°)					Dimensions H x W x D Inches (Weight lbs)	Connector Type
				Refer to datasheets for exact operating frequencies of each antenna.																	
				617 - 906	696 - 960	1695 - 2180	1695 - 2700	3300 - 4200	5150 - 5925	617 - 906	696 - 960	1695 - 2180	1695 - 2700	3300 - 4200	5150 - 5925	617 - 906	696 - 960	1695 - 2180	1695 - 2700		
1 FT	33°	12	CUVX033S1F0	4	4	4		11.5	13.1	12.5		0	0	0		12.0 x 23.2 x 7.0 (10)	4.3-10				
		6	CUUX033X03Fxyz0	2	4			10.0	11.0			0	0			12.1 x 26.6 x 7.0 (13)	4.3-10 or 7-16				
	65°	6	CUUX063X03Fxyz0	2	4			8.0	8.0			0	0		12.1 x 12.2 x 7.0 (8)	4.3-10 or 7-16					
2 FT	65°	6	HTXCWW4513Fxy0	2	4			13.9	14.1			0,20	0,10		24.1 x 16.2 x 7.3 (16)	7-16					
		24	2C6U4VX065X06Fwxys4	4	12	8		8.5	12.2	12.9			0	2,4,6	0	25.0 x 13.5 x 9.7 (18)	4.3-10				
		24	2L6U4VX065X06Fwxys4	4	12	8		9.1	12.7	11.7			0	2,4,6	0	25.0 x 13.5 x 9.7 (18)	4.3-10				
		24	6U6VX065X06Fxys5		12	12			12.0	15.5				2,4,6	2,4,6	24.7 x 18.2 x 10.6 (23)	4.3-10				
		20	2C4U4VX065X06Fwxys4	4	8	8		8.7	12.6	11.6			0	2,4,6	0	25.0 x 13.5 x 9.7 (13)	4.3-10				
		20	2L4U4VX065X06Fwxys4	4	8	8		8.6	12.5	11.6			0	2,4,6	0	25.0 x 13.5 x 9.7 (18)	4.3-10				
		20	4U6VX065X06Fxys5		8	12			14.3	15.9					2,4,6	2,4,6	24.7 x 18.2 x 10.6 (13)	4.3-10			
		16	4U4MX065X06Fxys4		8	4	4		14.5	11.5	5.6				2,4,6	0	0	24.7 x 18.0 x 10.6 (25)	4.3-10		
		10	C4UX065X06Fxys4	2	4				11.1	14.2			0	2,4,6		23.2 x 12.1 x 7.0 (12)	4.3-10				
		8	LU2VX65X2Fwxy	2	2	4		11.3	15.1	15.7			0		0,6	0,6	25.0 x 14.0 x 9.7 (12)	4.3-10			
4 FT	65°	6	HTXCWW63111414Fxy0	2	4			11.0	14.0			0,2	0,2		23.2 x 2.0 x 7.1 (13)	7-16					
		6	CUUX063X06Fxyz0	2	4			11.0	14.0			0,2	0,2	0,2,4	0,6,10	24.3 x 12.1 x 7.0 (13)	4.3-10 or 7-16				
		20	2C4U4VX045X14Fwxys5	4	8	8		13.8	16.4	18.9			0	0,5	0,5	54.8 x 16.0 x 7.1 (36)	4.3-10				
		32	4C6U6VX065X12Fwxyc5	8	12	12		9.3	13.7	15.4			0	2,4,6	2,4,6	48.0 x 20.7 x 8.7 (39)	4.3-10 & 2.2-5				
		32	4L6U6VX065X12Fwxyc5	8	12	12		9.6	13.8	15.4			0	2,4,6	2,4,6	48.7 x 20.5 x 8.3 (39)	4.3-10 & 2.2-5				
		28	2C6U6VX065X12Fwxyc5	4	12	12		11.4	11.8	14.6			0	2,4,6	2,4,6	48.0 x 14.0 x 10 (23)	4.3-10 & 2.2-5				
4 FT	65°	20	2C4U4VX065X12Fwxys5	4	8	8		11.3	14.8	17.0			0	2,4,6	2,4,6	48.0 x 13.5 x 9.7 (24)	4.3-10				
		16	2C4U2VX065X12wGy	4	8	4		10.7	14.9	16.2			0,5	Variable	3,6	48.0 x 13.5 x 9.7 (28)	4.3-10				
		8	LU2VX65X4Fwxy	2	2	4		13.5	16.9	17.3			0,6		0,6	0,6	47.9 x 13.5 x 9.7 (20)	4.3-10			

QUESTIONS? CONTACT US:

- PRE-SALE INQUIRIES ([quotes](#), [product info](#))...customerservice@amphenol-antennas.com
- POST-SALE INQUIRIES ([ship dates](#), [tracking](#))..customercare@amphenol-antennas.com
- TO SUBMIT ORDERS.....orders@amphenol-antennas.com
- TECHNICAL SUPPORTsupport@amphenol-antennas.com

We're here
to help!



Amphenol Antenna Solutions
 +1 (828) 324-6971
www.amphenol-antennas.com



