



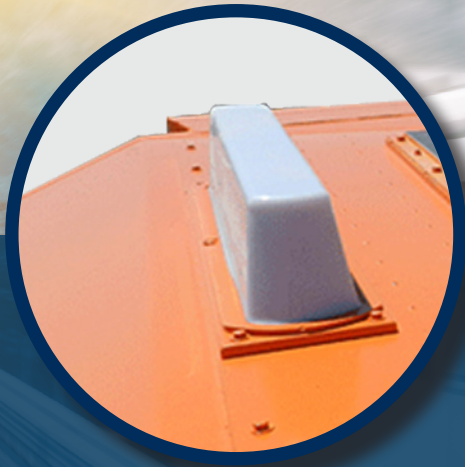
ACROSS THE WORLD.  
AROUND THE CORNER.

# RAILWAY

## ANTENNA SOLUTIONS

Multi-band arrays for data, voice and location-based services. Ideal for all locomotive/railway applications.





# RAILWAY ANTENNA SOLUTIONS

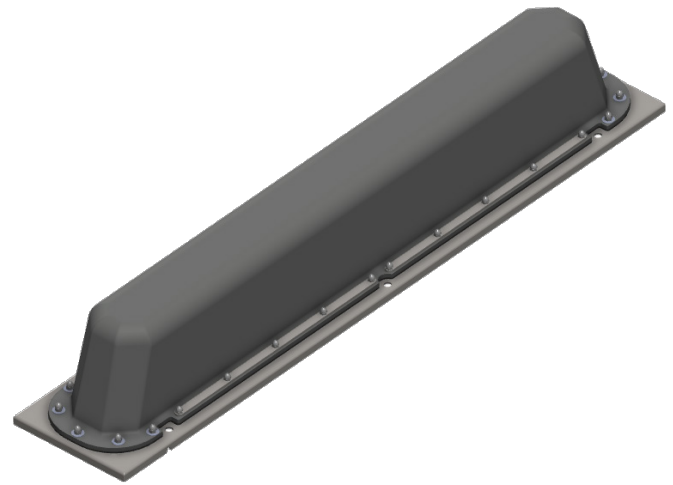
Scalable VHF, Cellular, Wi-Fi and GPS antenna arrays with quick-fit, blind-mate connector mounting systems and cabling solutions for rapid deployment.

- ⦿ Designed and tested to withstand the locomotive operational environment. **INDEPENDENTLY VERIFIED.**
- ⦿ Blind-mate connector system featuring self-alignment pins for **RAPID DEPLOYMENT.**
- ⦿ Quality RF components - cables, antennas, connectors all **AMPHENOL** designed and manufactured.
- ⦿ **BEST IN CLASS** roof installation design, eliminates leaks.
- ⦿ **SCALABLE DESIGN** – antenna arrays can be easily swapped for individual customization.

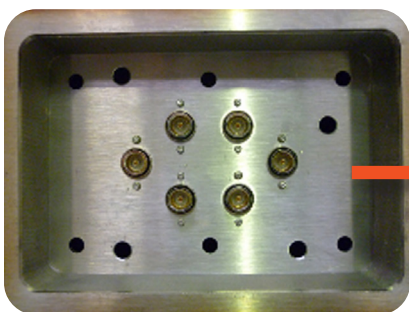
**RAILWAY ANTENNA SOLUTIONS**

**7878002**

Ideal for all locomotive/railway applications.  
Multi-band arrays for data, voice and  
location-based services.



ANTENNA TYPE	GPS	CELLULAR	WLAN	VHF
FREQUENCY	1164-1254 MHz 1525-1606 MHz	806-960 MHz 1700-2500 MHz	2400-2500 MHz 4900-6000 MHz	217-223 MHz
POLARIZATION	RHCP	Vertical	Vertical	Vertical
GAIN	37 dB	3 dBi	5 dBi	2.1 dBi
VSWR	1.8:1	2.0:1	2.0:1	1.5:1
MAXIMUM POWER	2-16 Vdc	100 Watts	100 Watts	100 Watts
MATERIAL	Aluminum back plane. Heavy-duty UV stable over-shroud			
DIMENSIONS (L x W x H)	1000 x 200 x 175 mm (39.3 x 7.9 x 6.9 in)			
WEIGHT	11 kg (24.2 lbs)			
TEMPERATURE EXTREME TEST	-45° to +75° C (-49° to +131° F)			
THERMAL SHOCK	70° to +140° C (158° to 584° F)			
RELATIVE HUMIDITY	Range 0% to 100%			
WATER SPRAY	40 PSI @ 1.21 mtrs (4 ft)			
SALT FOG	48-Hour			



Mating system on  
antenna base



Blind-mate system on  
locomotive roof

**VHF**  
**CELLULAR**  
*Wi-Fi*  
**GPS**



**Amphenol**

ANTENNA SOLUTIONS