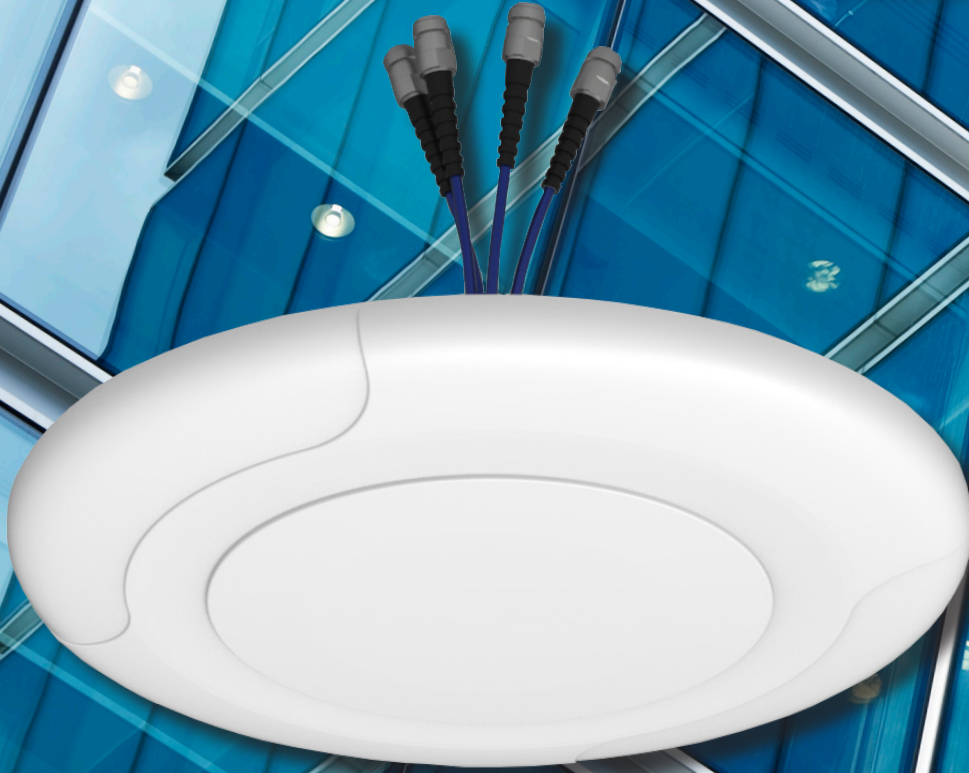


ACROSS THE WORLD.
AROUND THE CORNER.



IN-BUILDING DAS ANTENNAS

Amphenol's **PIM-Rated** antennas ensure reliable connectivity for all your Small Cell and iDAS applications.





IN-BUILDING ANTENNAS

In office building, hospitals, universities and venues all around the world in-building wireless coverage is a necessity.

Amphenol's **PIM-RATED ANTENNAS** ensure reliable connectivity for all your Small Cell and iDAS applications. High gain omni and directional MIMO and SISO configurations are available for LTE, 3G, 4G and 5G, along with options for Public Safety.

Complete your iDAS network with Amphenol's line of quality **PASSIVE COMPONENTS** and **CABLE ASSEMBLIES**.

MIMO

IDAS ANTENNAS



600 MHz Capable

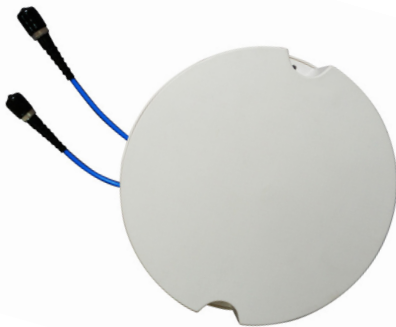
MODEL NUMBER	iLO4M6-6Gx				
DESCRIPTION	4 - Port Ceiling Mount Omni Antenna				
CONFIGURATION	4 x 4 MIMO				
FREQUENCY RANGE	617-6000 MHz				
FREQUENCY SUB-RANGE	617-698	698-960	1695-2700	3300-4000	4800-6000
POLARIZATION	Linear Horizontal x4				
GAIN	3.0 ± 1.0 dBi	3.0 ± 1.0 dBi	4.5 ± 1.0 dBi	4.5 ± 1.0 dBi	4.5 ± 1.0 dBi
HORIZONTAL BEAMWIDTH	360°	360°	360°	360°	360°
IMPEDANCE	50 Ohms				
ISOLATION	≥ 18 dB	≥ 18 dB	≥ 20 dB	≥ 30 dB	≥ 30 dB
VSWR	≤ 1.8	≤ 1.8	≤ 1.8	≤ 1.8	≤ 1.8
PASSIVE INTERMODULATION	≤ -153 dBc				
MAXIMUM POWER	50 Watts				
CONNECTORS	4 Ports: 4.3-10 Female				
DIMENSIONS	Ø360 x 24 mm (Ø14.2 x 0.9 in)				
WEIGHT	0.95 kg (2.0 lbs)				
RADOME	ABS, White, RAL9016				

MIMO IDAS ANTENNAS



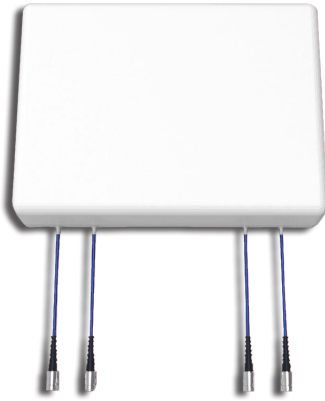
600 MHz Capable

MODEL NUMBER	5086500A					
DESCRIPTION	2-Port Ceiling Mount Omni Antenna					
CONFIGURATION	MIMO					
FREQUENCY RANGE	617-6000 MHz					
FREQUENCY SUB-RANGE	617-806	806-960	1350-1550	1690-2700	3300-3800	4900-6000
POLARIZATION	Linear Horizontal x2					
GAIN	1.5±0.5 dBi	2.2±0.5 dBi	3.5±0.5 dBi	4.5±1.0 dBi	6.0±1.0 dBi	6.0±1.0 dBi
HORIZONTAL BEAMWIDTH	360°	360°	360°	360°	360°	360°
IMPEDANCE	50 Ohms					
ISOLATION	≥ 16 dB	≥ 18 dB	≥ 18 dB	≥ 20 dB	≥ 30 dB	≥ 30 dB
VSWR	≤ 1.8	≤ 1.8	≤ 1.8	≤ 1.8	≤ 1.8	≤ 1.8
PASSIVE INTERMODULATION	≤ -153 dBc					
MAXIMUM POWER	50 Watts					
CONNECTORS	2 Ports: 4.3-10 Female or N-Type Female (specify when ordering)					
DIMENSIONS	Ø266 x 18 mm (Ø10.5 x 0.7 in)					
WEIGHT	0.5 kg (1.1 lbs)					
RADOME	ABS, White, RAL9003					



MODEL NUMBER	5005370A			
DESCRIPTION	2-Port Ceiling Mount Omni Antenna			
CONFIGURATION	MIMO			
FREQUENCY RANGE	698-4200 MHz			
FREQUENCY SUB-RANGE	698-806	806-960	1710-2700	3400-4200
POLARIZATION	(2x) Linear			
GAIN	3.0 ± 0.5 dBi	3.5 ± 0.5 dBi	4.5 ± 1.0 dBi	5.0 ± 1.0 dBi
HORIZONTAL BEAMWIDTH	360°	360°	360°	360°
IMPEDANCE	50 Ohms			
ISOLATION	> 17 dB	> 17 dB	> 20 dB	> 25 dB
VSWR	≤ 2.0	≤ 2.0	≤ 2.0	≤ 2.0
PASSIVE INTERMODULATION	≤ -150 dBc			
MAXIMUM POWER	50 Watts			
CONNECTORS	2 Ports: 4.3-10 Female or N-Type Female (specify when ordering)			
DIMENSIONS	Ø218 x 40 mm (8.6 x 1.6 in)			
WEIGHT	0.5 kg (1.1 lbs)			
RADOME	ABS, White, RAL9003			

MIMO IDAS ANTENNAS



MODEL NUMBER	iD4M7-4Gx70B		
DESCRIPTION	4-Port MicroCell Panel Antenna		
CONFIGURATION	MIMO		
FREQUENCY RANGE	698-4000 MHz		
FREQUENCY SUB-RANGE	698-960	1710-2700	3300-4000
POLARIZATION	(2x) $\pm 45^\circ$		
GAIN	6.0 \pm 1.0 dBi	7.5 \pm 1.0 dBi	7.5 \pm 1.0 dBi
HORIZONTAL BEAMWIDTH	75°	70°	68°
VERTICAL BEAMWIDTH	70°	70°	60°
VSWR	≤ 1.8	≤ 1.8	≤ 1.8
PASSIVE INTERMODULATION	≤ -153 dBc		
MAXIMUM POWER	50 Watts		
CONNECTORS	4 Ports: 4.3-10 Female		
DIMENSIONS	308 x 420 x 82 mm (12.1 x 16.5 x 3.2 in)		
WEIGHT	2.8 kg (6 lbs)		
RADOME	ABS, White, RAL 9003		



MODEL NUMBER	7834450				
DESCRIPTION	2-Port MicroCell Panel Antenna				
CONFIGURATION	MIMO				
FREQUENCY RANGE	698-4200 MHz				
FREQUENCY SUB-RANGE	698-806	806-960	1710-2170	2200-2700	3400-4200
POLARIZATION	Vertical and Horizontal				
GAIN	5.0 \pm 0.5 dBi	6.0 \pm 0.5 dBi	7.0 \pm 0.5 dBi	7.0 \pm 0.5 dBi	5.5 \pm 0.5 dBi
HORIZONTAL BEAMWIDTH	80°	80°	65°	60°	55°
VERTICAL BEAMWIDTH	73°	70°	60°	60°	30°
IMPEDANCE	50 Ohms				
VSWR	≤ 2.0	≤ 2.0	≤ 2.0	≤ 2.0	≤ 2.0
PASSIVE INTERMODULATION	-153 dBc				
MAXIMUM POWER	50 Watts				
CONNECTORS	2 Ports: 4.3-10 Female or N-Type Female (specify when ordering)				
DIMENSIONS	404 x 180 x 62 mm (15.9 x 7.1 x 2.4 in)				
WEIGHT	1.2 kg (2.6 lbs)				
RADOME	PVC, White				

MIMO IDAS ANTENNAS



MODEL NUMBER	7834400		
DESCRIPTION	2-Port MicroCell Panel Antenna		
CONFIGURATION	MIMO		
FREQUENCY RANGE	695-2700 MHz		
FREQUENCY SUB-RANGE	695-806	806-960	1710-2700
POLARIZATION	±45°		
GAIN	5.0 ± 1.0 dBi	6.0 ± 1.0 dBi	7.0 ± 1.0 dBi
HORIZONTAL BEAMWIDTH	75° ± 15°		65° ± 15°
VERTICAL BEAMWIDTH	68°	60°	65°
IMPEDANCE	50 Ohms		
ISOLATION	> 20 dB		> 23 dB
VSWR	≤ 2.0		≤ 1.5
PASSIVE INTERMODULATION	≤ -150 dBc		
FRONT-TO-BACK RATIO	≥ 10 dB	≥ 12 dB	≥ 15 dB
MAXIMUM POWER	50 Watts		
CONNECTORS	2 Ports: 4.3-10 Female or N-Type Female (specify when ordering)		
DIMENSIONS	308 x 190 x 65 (12.1 x 7.5 x 2.6 in)		
WEIGHT	0.9 kg (2.0 lbs)		
RADOME	ABS, White RAL9003		

MIMO

SISO

IDAS ANTENNAS



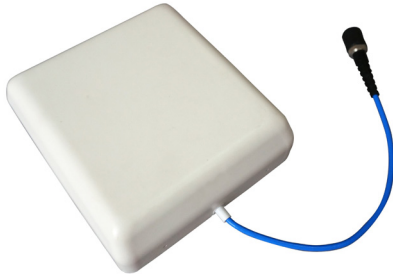
MODEL NUMBER	5086000A			
DESCRIPTION	1-Port Ceiling Mount Omni Antenna			
CONFIGURATION	SISO			
FREQUENCY RANGE	698-4000 MHz			
FREQUENCY SUB-RANGE	698-806	806-960	1710-2700	3400-4000
POLARIZATION	Horizontal			
GAIN	2.2 ± 0.5 dBi	3.5 ± 0.5 dBi	4.5 ± 1.0 dBi	6.0 ± 1.0 dBi
HORIZONTAL BEAMWIDTH	360°	360°	360°	360°
IMPEDANCE	50 Ohms			
VSWR	≤ 1.5	≤ 1.5	≤ 1.5	≤ 1.5
PASSIVE INTERMODULATION	≤ -153 dBc			
MAXIMUM POWER	50 Watts			
CONNECTORS	1 Port: 4.3-10 Female or N-Type Female (specify when ordering)			
DIMENSIONS	Ø220 x 18 mm (Ø8.7 x 0.7 in)			
WEIGHT	0.3 kg (0.7 lbs)			
RADOME	ABS, White, RAL9003			



MODEL NUMBER	5052470			
DESCRIPTION	1-Port Ceiling Mount Omni Antenna			
CONFIGURATION	SISO			
FREQUENCY RANGE	698-6000 MHz			
FREQUENCY SUB-RANGE	698-806	806-960	1710-2700	3400-6000
POLARIZATION	Vertical			
GAIN	1.8 ± 0.5 dBi	2.0 ± 0.5 dBi	3.0 ± 1.0 dBi	4.5 ± 1.0 dBi
HORIZONTAL BEAMWIDTH	360°	360°	360°	360°
VERTICAL BEAMWIDTH	90°	70°	35°	30°
IMPEDANCE	50 Ohms			
VSWR	≤ 1.8	≤ 1.5	≤ 1.5	≤ 1.8
PASSIVE INTERMODULATION	≤ -153 dBc			
MAXIMUM POWER	50 Watts			
CONNECTORS	1 Port: 4.3-10 Female or N-Type Female (specify when ordering)			
DIMENSIONS	Ø203 x 115 mm (Ø8.0 x 4.5 in)			
WEIGHT	0.37 kg (0.8 lbs)			
RADOME	ABS, White, RAL9003			



MODEL NUMBER	7825700					
DESCRIPTION	1-Port Omni Stick Antenna					
CONFIGURATION	SISO					
FREQUENCY RANGE	696-960 / 1710-2700 MHz					
FREQUENCY SUB-RANGE	696-806	806-960	1710-1880	1850-1990	1900-2170	2200-2700
POLARIZATION	Vertical					
GAIN	1.87 dBi	1.24 dBi	2.5 dBi	3.4 dBi	2.8 dBi	2.9 dBi
HORIZONTAL BEAMWIDTH	360°	360°	360°	360°	360°	360°
VERTICAL BEAMWIDTH	87.7°	68.3°	44.4°	40.3°	60.3°	36.1°
IMPEDANCE	50 Ohms					
VSWR	< 2.5:1		< 2.0:1			< 2.5:1
PASSIVE INTERMODULATION	-153 dBc (only applicable at date of manufacture)					
MAXIMUM POWER	50 Watts					
CONNECTORS	1 Port: N-Type Female, Bottom					
DIMENSIONS	Without Connector: 205 x Ø30 mm (8.1 x Ø1.2 in)					
	With Connector: 234 x Ø30 mm (9.2 x Ø1.2 in)					
WEIGHT	0.11 kg (0.24 lbs) without mounting kit					
MOUNTING KIT	Refer to data sheet for options					



MODEL NUMBER	5003700				
DESCRIPTION	1-Port MicroCell Panel Antenna				
CONFIGURATION	SISO				
FREQUENCY RANGE	698-4000 MHz				
FREQUENCY SUB-RANGE	698-806	806-960	1710-2170	2200-2700	3400-4000
POLARIZATION	Vertical				
GAIN	5.0 ± 0.5 dBi	6.0 ± 0.5 dBi	7.0 ± 0.5 dBi	7.5 ± 0.5 dBi	5.5 ± 0.5 dBi
HORIZONTAL BEAMWIDTH	80°	80°	65°	60°	55°
VERTICAL BEAMWIDTH	73°	70°	60°	60°	30°
IMPEDANCE	50 Ohms				
VSWR	≤ 1.8				
PASSIVE INTERMODULATION	-153 dBc				
FRONT-TO-BACK RATIO	> 5 dB	> 8 dB	> 10 dB	> 15 dB	> 10 dB
MAXIMUM POWER	50 Watts				
CONNECTORS	1 Port: 4.3-10 Female or N-Type Female (specify when ordering)				
DIMENSIONS	180 x 170 x 60 mm (7.1 x 6.7 x 2.4 in)				
WEIGHT	0.37 kg (0.8 lbs)				
RADOME	ABS, White, RAL9003				



MODEL NUMBER	5003500			
DESCRIPTION	1-Port MicroCell Panel Antenna			
CONFIGURATION	SISO			
FREQUENCY RANGE	698-2700 MHz			
FREQUENCY SUB-RANGE	698-806	806-960	1710-2170	2170-2700
POLARIZATION	Vertical			
GAIN	5.5 ± 1.0 dBi	6.0 ± 1.0 dBi	7.0 ± 1.0 dBi	7.5 ± 1.0 dBi
HORIZONTAL BEAMWIDTH	85° ± 20°	85° ± 20°	62° ± 15°	60° ± 20°
VERTICAL BEAMWIDTH	75°	73°	60°	50°
IMPEDANCE	50 Ohms			
VSWR	≤ 1.5	≤ 1.5	≤ 1.5	≤ 1.5
PASSIVE INTERMODULATION	-153 dBc			
FRONT-TO-BACK RATIO	> 8 dB	> 8 dB	> 12 dB	> 12 dB
MAXIMUM POWER	50 Watts			
CONNECTORS	1 Port: 4.3-10 Female or N-Type Female (specify when ordering)			
DIMENSIONS	165 x 155 x 50 mm (6.5 x 6.1 x 2.0 in)			
WEIGHT	0.37 kg (0.8 lbs)			
RADOME	ABS, White, RAL9003			



IDAS ANTENNAS FOR PUBLIC SAFETY



600 MHz Capable

MODEL NUMBER	5086100A		
DESCRIPTION	1-Port Ceiling Mount Omni Antenna		
APPLICATION	PUBLIC SAFETY		
FREQUENCY RANGE	380-2700 MHz		
FREQUENCY SUB-RANGE	380-520	698-960	1710-2700
POLARIZATION	Horizontal		
GAIN	2.0 ± 1.0 dBi	2.2 ± 1.0 dBi	4.5 ± 1.0 dBi
HORIZONTAL BEAMWIDTH	360°	360°	360°
IMPEDANCE	50 Ohms		
VSWR	≤ 2.5	≤ 2.0	≤ 2.0
PASSIVE INTERMODULATION	n/a	≤ -140 dBc	≤ -140 dBc
MAXIMUM POWER	50 Watts		
CONNECTORS	1 Port: 4.3-10 Female or N-Type Female (specify when ordering)		
DIMENSIONS	Ø266 x 18 mm (Ø10.5 x 0.7 in)		
WEIGHT	0.4 kg (0.9 lbs)		
RADOME	ABS, White, RAL9003		



600 MHz Capable

MODEL NUMBER	5052460		
DESCRIPTION	1-Port Ceiling Mount Omni Antenna		
APPLICATION	PUBLIC SAFETY		
FREQUENCY RANGE	380-6000 MHz		
FREQUENCY SUB-RANGE	380-520	698-960	1710-6000
POLARIZATION	Vertical		
GAIN	2.0 ± 1.0 dBi	2.5 ± 1.0 dBi	4.0 ± 1.0 dBi
HORIZONTAL BEAMWIDTH	360°	360°	360°
VERTICAL BEAMWIDTH	90°	90°	35°
IMPEDANCE	50 Ohms		
VSWR	≤ 3.0	≤ 2.0	≤ 2.0
PASSIVE INTERMODULATION	n/a	≤ -153 dBc	≤ -153 dBc
MAXIMUM POWER	50 Watts		
CONNECTORS	1 Port: 4.3-10 Female or N-Type Female (specify when ordering)		
DIMENSIONS	Ø298 x 152 mm (Ø11.7 x 6.0 in)		
WEIGHT	0.82 kg (1.8 lbs)		
RADOME	ABS, White, RAL9003		

PUBLIC SAFETY

COMPLETE YOUR iDAS NETWORK WITH

LOW-PIM

PASSIVE COMPONENTS & CABLE ASSEMBLIES

View products details on our website at www.amphenol-antennas.com

HYBRID COUPLERS



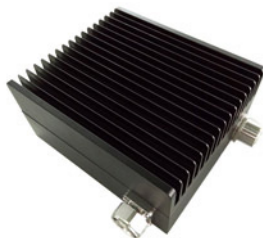
POWER SPLITTERS



LOW POWER DAS SPLITTERS



ATTENUATORS



DIRECTIONAL COUPLERS



TERMINATION LOADS



TAPPERS



INDOOR JUMPERS



DC BLOCKS





Amphenol

ANTENNA SOLUTIONS