

GEN4

HIGH GAIN
HIGH PORT COUNT
COVERS SUB-6 SPECTRUM
INNOVATIVE MECHANICAL DESIGN



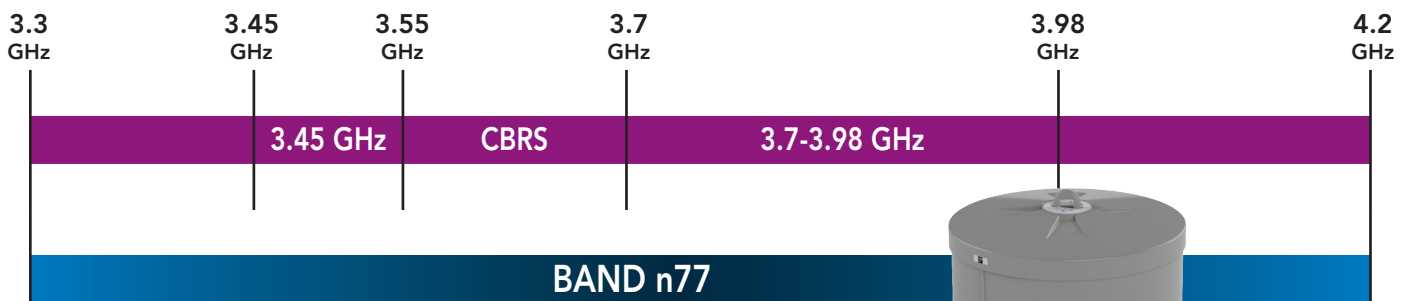
MAXIMIZE YOUR
C-BAND SPECTRUM

MAXIMIZE YOUR
C-BAND SPECTRUM
WITH AMPHENOL'S **GEN4** CANISTER ANTENNAS

New **HIGH GAIN, HIGH PORT COUNT** small cell antennas deliver optimal coverage across the full SUB-6 spectrum, bolstering the speed and capacity of networks utilizing C-BAND, with an innovative mechanical design.

Amphenol's GEN4 Solutions Offer Full CBRS/C-BAND Coverage

Amphenol's **GEN4** antennas operate at the full 3300-4200 MHz CBRS/C-BAND spectrum.



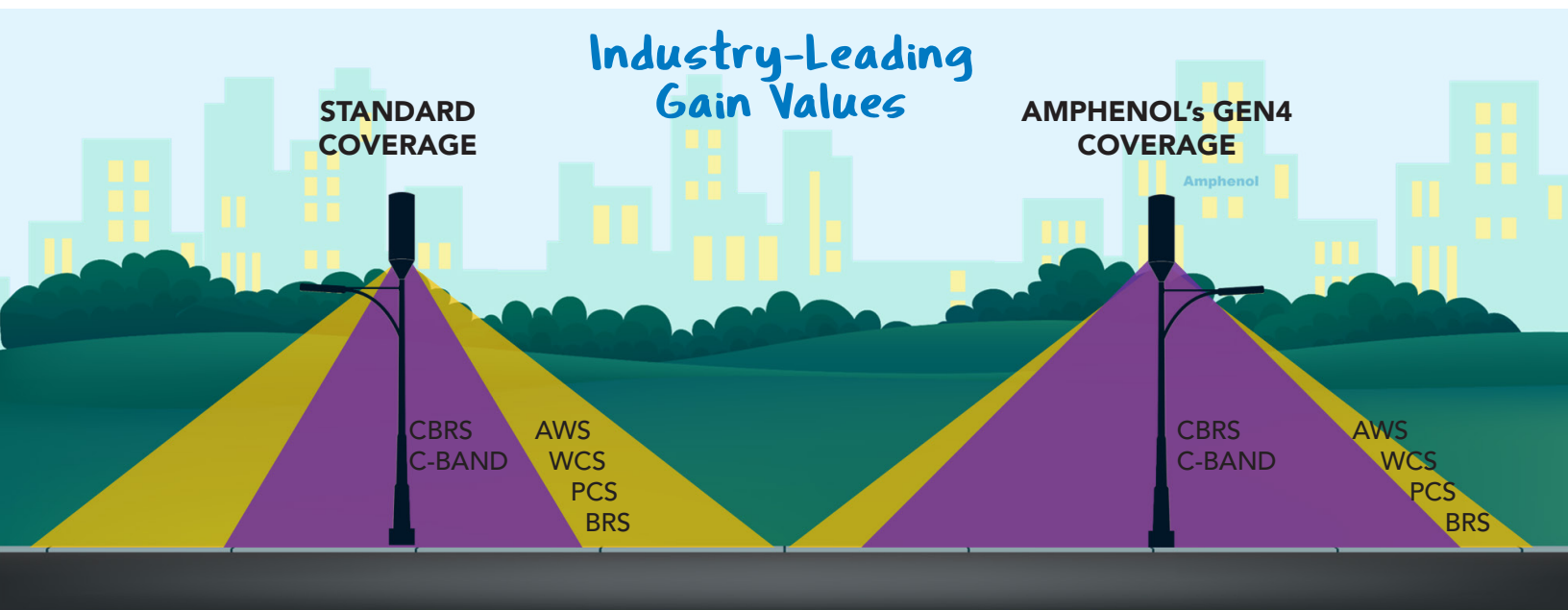
GEN4 Antennas Cover the full Band n77 3300-4200 MHz



Get Optimal Coverage with HIGH GAIN Solutions

With enhancements in gain values, Amphenol's **GEN4** antennas optimize the coverage footprint of AWS/WCS/PCS/BRS (mid band) and CBRS/C-BAND (high band) spectrum; reducing handover and increasing channel capacity through spectral efficiency with 4T4R AWS, 4T4R PCS and 4T4R/8T8R C-BAND MIMO.

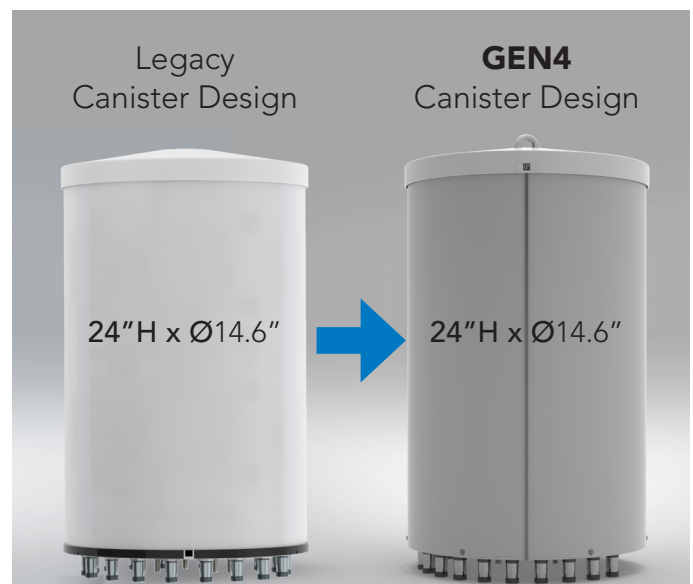
To bolster performance of networks utilizing the C-BAND spectrum, Amphenol has increased the high band gain of these antennas so that it is closer to or even greater than that of the mid band, helping to compensate for any propagation differences. In addition, with adjustments in electrical tilts of the bands and radio power levels the coverage footprint is even more closely matched.



Minimize Zoning Hassles with LIKE-FOR-LIKE Antenna Swap-Outs

Enhancements in both mechanical design and electrical performance are available in the same, compact physical package as existing canister antennas. This minimizes zoning hassles, offering like-for-like antenna swap-outs between legacy and GEN4 antennas. Install easily, connect reliably and blend seamlessly into any environment.

Easily Swap RFDSs



The NUMBER OF PORTS You Need at the Right Frequencies

Amphenol's high port count **GEN4** antennas are ideally suited for multi-carrier, 4x4 and 8x8 MIMO applications. New solutions offer up to 12 ports for the CBRS/C-BAND spectrum, with up to 8 dedicated ports for C-BAND alone. Below is an example of a shared antenna scenario utilizing a 24-port canister antenna. Multi-port antenna solutions are available to cover virtually any scenario. Contact us to discuss your specific requirements.

Up to 12
CBRS/C-BAND
Ports with
industry-leading
high gain

Typical Shared Antenna Scenario
Port Count and Options Will Vary By Antenna Model

24-PORT Canister Antenna		Low Band		Mid Band				High Band	
		600	700/850	AWS	WCS	PCS	BRS	CBRS	C-BAND
Multi-Carrier	Carrier #1	2x2 MIMO	NA	4x4 MIMO AWS/PCS				2x2 -or- 4x4 MIMO	4x4 MIMO
	Carrier #2	NA	2x2 MIMO	4x4 MIMO AWS/PCS/WCS				2x2 MIMO or NA	NA
	Carrier #3	NA	NA	4x4 MIMO AWS/PCS/BRS				NA	
Single Carrier		2x2 MIMO	2x2 MIMO	(2x) 4x4 MIMO -or- 8x8 MIMO				(2x) 2x2 MIMO	4x4 MIMO
								-or- 4x4 MIMO	

Full SUB-6 5G SPECTRUM Support

Amphenol's **GEN4** antenna solutions offer multiple technologies within a single, small cell canister antenna - covering the full Sub-6 5G spectrum.

Covers Low, Mid & High Band Frequencies

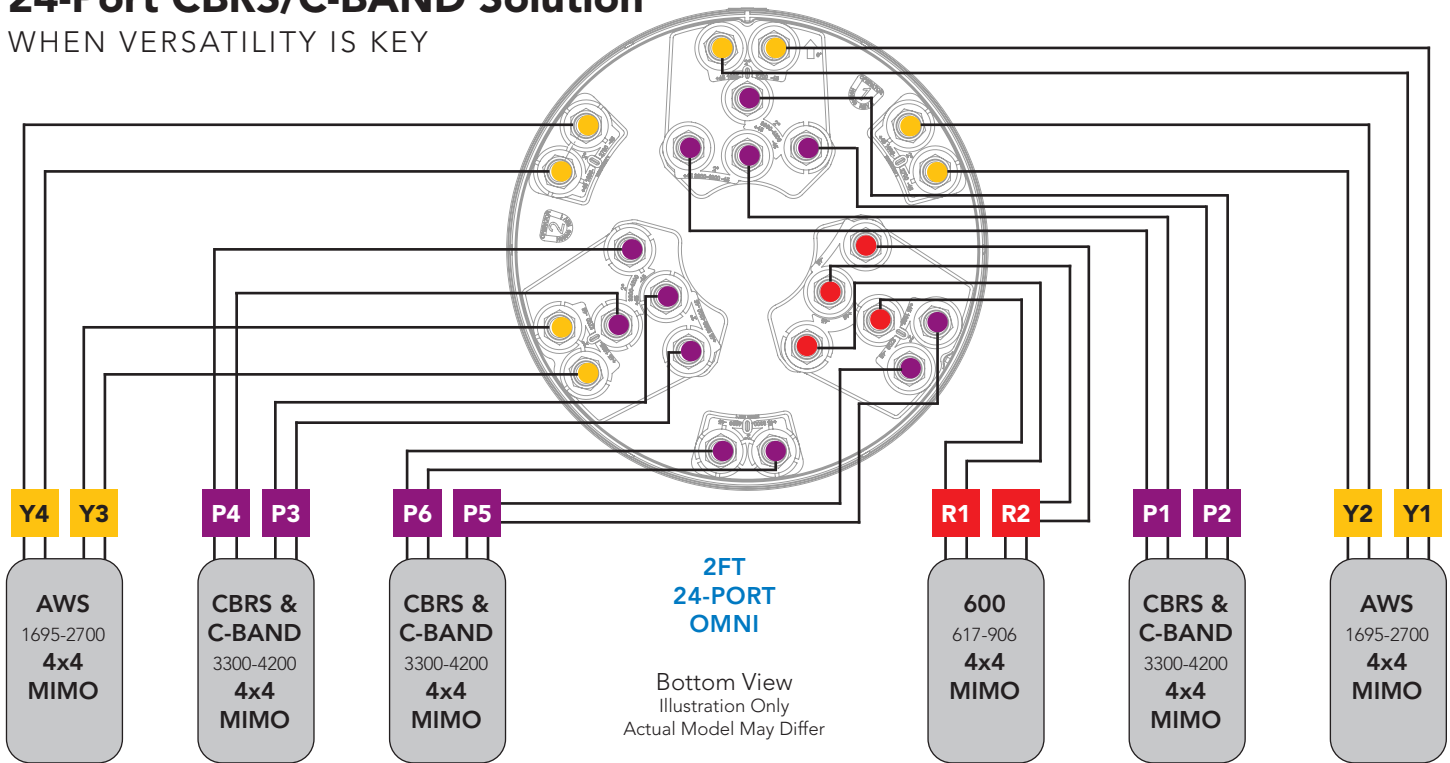


ALL
UNDER
ONE
RADOME*

*Not all GEN4 models operate at all frequencies. Refer to data sheets.

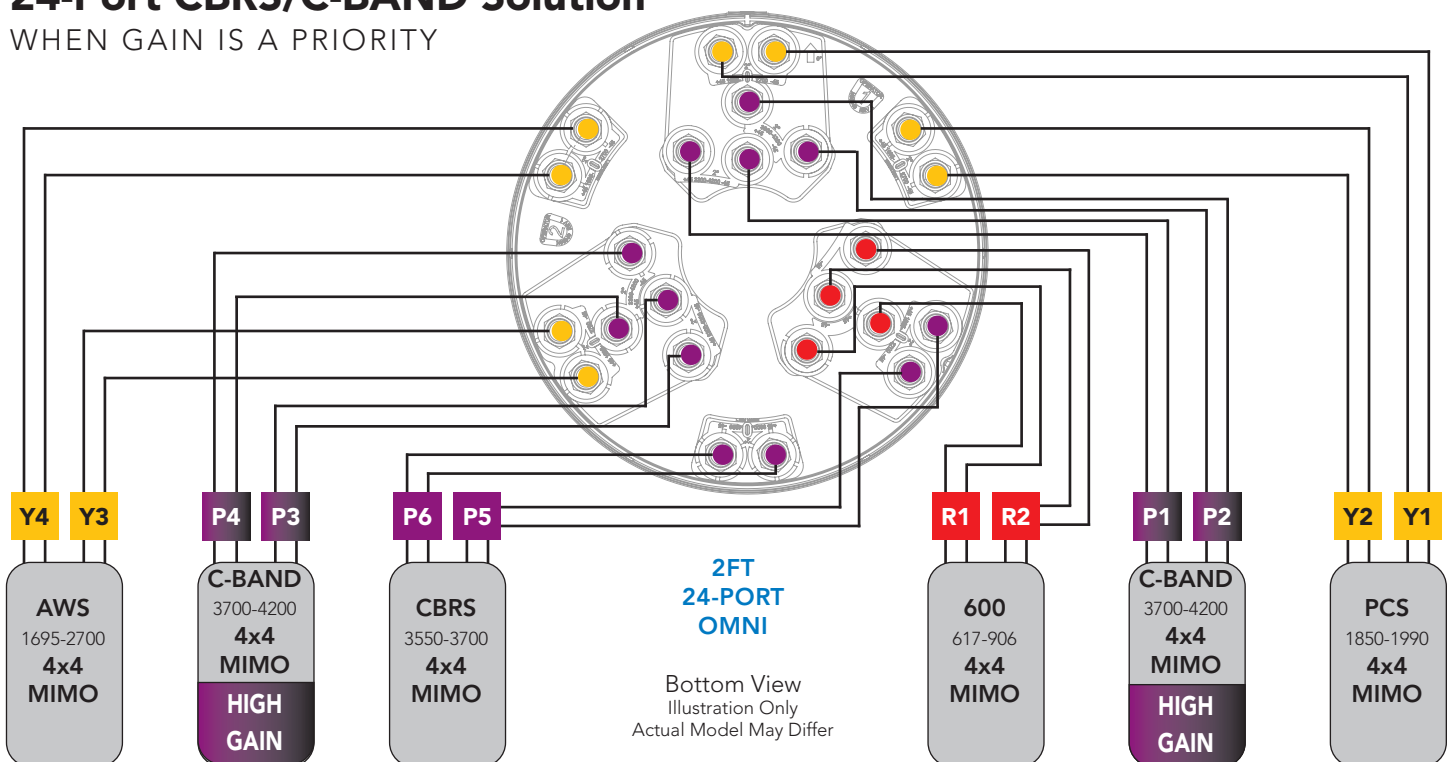
24-Port CBRs/C-BAND Solution

WHEN VERSATILITY IS KEY



24-Port CBRs/C-BAND Solution

WHEN GAIN IS A PRIORITY





Amphenol

ANTENNA SOLUTIONS