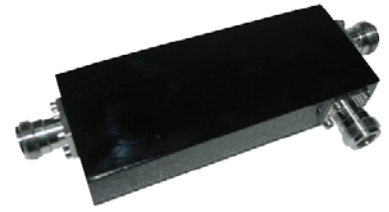
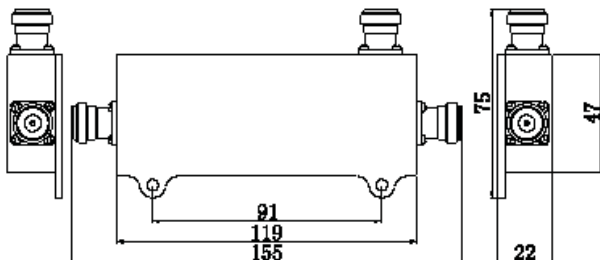


ADC-xx-WBH-XP-NF-CC

Directional Coupler | 698-4000 MHz | N Female



Ordering Options		40 dB Coupler
Model Number (xx)		ADC-40-WBH-XP-NF-CC
Electrical Characteristics		
Frequency Range		698-4000 MHz
Coupling		40 dB
Coupling Tolerance		±1.5 dB
Insertion Loss		≤ 0.2 dB
Isolation		≥ 55 dB
VSWR		≤ 1.30
Average Power (max)		200 W
Peak Power (max)		1 kW
PIM3 (2x43 dBm)		≤ -160 dBc
Impedance		50Ω
Mechanical Characteristics		
Plating	Inner Contact	Silver
	Outer Trimetal	Trimetal
Connector		N Female
Environmental Characteristics		
Operating Temperature		-35° C to +70° C
Relative Humidity		Up to 95%
RoHs Compliant		yes
Application		Indoor / Outdoor
Ingress Protection		IP65



Quoted performance parameters are provided to offer typical, peak or range values only and may vary as a result of normal testing, manufacturing and operational conditions. Extreme operational conditions and/or stress on structural supports is beyond our control. Such conditions may result in damage to this product. Improvements to products may be made without notice.