

7691410

Multi Band | Microcell Panel | X-Pol/MIMO | 80° / 60° / 60° | 7.0 / 8.0 / 8.0 dBi

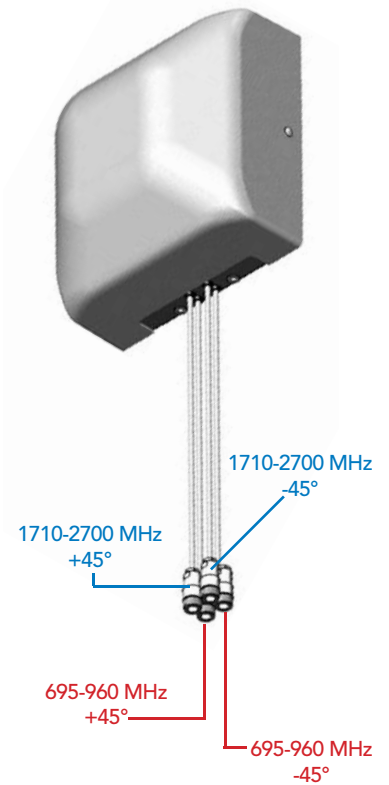
- Two, Wide Band Crossed Dipoles $\pm 45^\circ$ Polarisation (X-Pol/MIMO)
- Non-duplexed, 4 leads/connectors
- Small Panel, Wall Mounted, Indoor and Outdoor Application

Ordering Options	Model Number
Antenna with N-Type Connector	7691410
Antenna with 4.1/9.5 Mini-DIN Connector	7691410-mDIN
Antenna with 7/16-DIN Connector	7691410-DIN

Electrical Characteristics			
Frequency Band	695-960 MHz	1710-1880 MHz	1900-2700 MHz
Polarisation	$\pm 45^\circ$	$\pm 45^\circ$	$\pm 45^\circ$
Horizontal Beamwidth (-3 dB)	80°	60°	60°
Gain	4.9 dBd / 7.0 dBi	5.9 dBd / 8.0 dBi	5.9 dBd / 8.0 dBi
Impedance	50 Ω		
VSWR	< 2:1	< 2:1	< 2:1
Isolation Between Ports	> 23 dB		
Front-to-Back Ratio	> 20 dB		
IMP (at 2x10W)	7691410	-150 dBc (only applicable at date of manufacture)	
	7691410-mDIN	-150 dBc	
	7691410-DIN	-150 dBc	
Maximum Power	25W Per Port		
Connectors Per Band, Type, Location	7691410	4 Connectors / N-Type Female / 1.1m (43 in) Flylead of RG303	
	7691410-mDIN	4 Connectors / 4.1-9.5 Mini-DIN Female / 1.1m (43 in) Flylead of RG303	
	7691410-DIN	4 Connectors / 7-16 DIN Female / 1.1m (43 in) Flylead of RG303	

Mechanical Characteristics		
Dimensions (Height x Width x Depth)	207 x 207 x 125 mm	8.1 x 8.1 x 4.9 in
Weight	0.6 kg	1.3 lbs

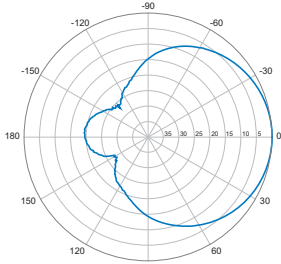
Mounting Options	
Mounting	Wall mount standard - stainless steel plate, 4 screw holes



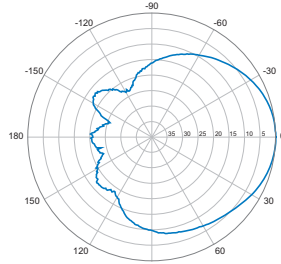
Quoted performance parameters are provided to offer typical or range values only and may vary as a result of normal manufacturing and operational conditions. Extreme operational conditions and/or stress on structural supports is beyond our control. Such conditions may result in damage to this product. Improvements to product may be made without notice.

7691410

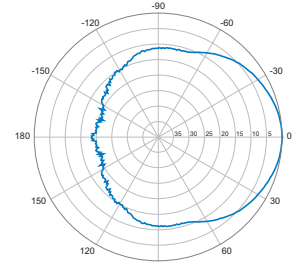
Multi Band | Microcell Panel | X-Pol/MIMO | 80° / 60° / 60° | 7.0 / 8.0 / 8.0 dBi



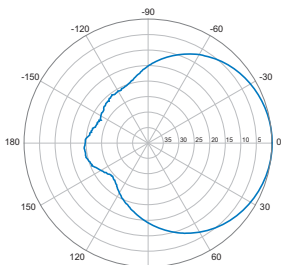
Horizontal | 930 MHz



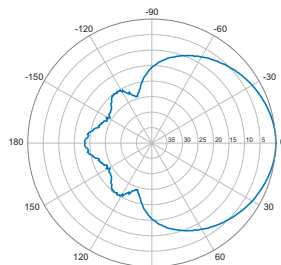
Horizontal | 1800 MHz



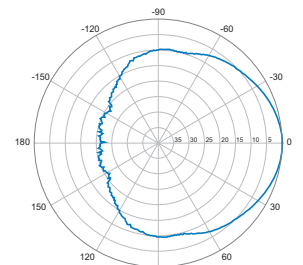
Horizontal | 2100 MHz



Vertical | 930 MHz



Vertical | 1800 MHz



Vertical | 2100 MHz

Quoted performance parameters are provided to offer typical or range values only and may vary as a result of normal manufacturing and operational conditions. Extreme operational conditions and/or stress on structural supports is beyond our control. Such conditions may result in damage to this product. Improvements to product may be made without notice.