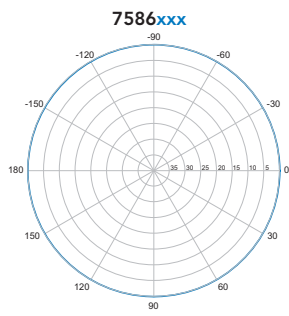
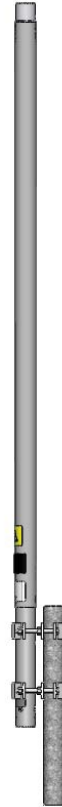


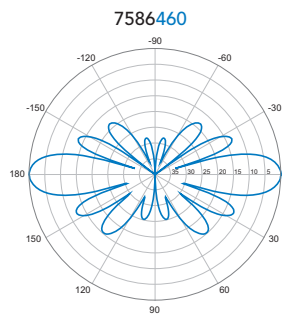
7586xxx

Single Band | Colinear Omni | V-Pol | 360° | 8.1 dBi

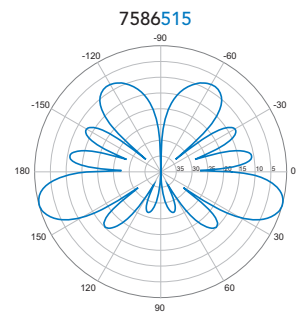
Ordering Options		Model Number
When ordering, replace "xxx" in the model number with one of the following options:		
For the antenna with 0° fixed electrical downtilt		7586460
For the antenna with 15° fixed electrical downtilt		7586515
Electrical Characteristics		
Frequency Band	450-470 MHz	
Polarisation	Vertical	
Horizontal Beamwidth	360°	
Vertical Beamwidth	17°	
Gain	8.1 dBi	
Electrical Downtilt	See ordering options above	
Impedance	50Ω	
VSWR	< 1.5:1	
Input Power	300 W	
Lightning Protection	DC Grounded Antenna remains intact following a lightning strike of 2.5 x 10 ⁵ Amp ² second	
Connector(s) / Location	1 Port, N-Type Female, Bottom	
Mechanical Characteristics		
Length	3100 mm	122.0 in
Weight without Mounting Brackets	7.0 kg	15.4 lbs
Wind Load @ 45 m/s	220 N	49.5 lbf
Materials	Glass fibre shroud; aluminum mounting section	
Mounting Options		
Mounting bracket kits are ordered separately.		
Mounting Bracket Kit	0300120/00	



Horizontal



Vertical | 0°



Vertical | 15°

Quoted performance parameters are provided to offer typical, peak or range values only and may vary as a result of normal testing, manufacturing and operational conditions. Extreme operational conditions and/or stress on structural supports is beyond our control. Such conditions may result in damage to this product. Improvements to products may be made without notice.