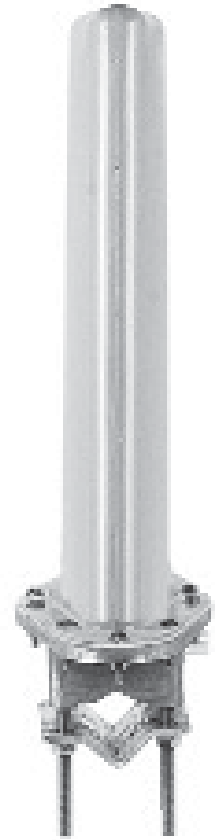


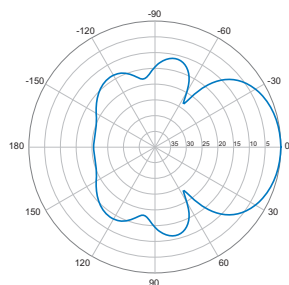
## 726-01-xx

Single Band | GSM Shrouded Yagi | V & H-Pol | 47° | 11.0 dBi

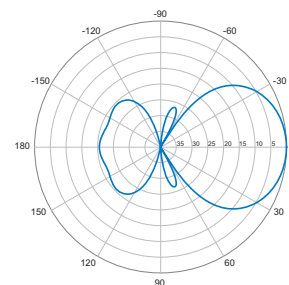
- Single band, V-Pol & H-Pol, GSM shrouded yagi antenna
- Ideal for long range SHF fixed links
- “Aircraft wing” geometry of the radome minimises wind area
- PTFE printed circuit feed allows wide band operation & increases antenna power handling capability



Ordering Options		
Mounting Options	Connector Types (xx)	
	N Socket	7/16 Socket
No Mounting - Antenna Only	726-01-05	726-01-33
Mounting Bracket for Ø38-Ø60 mm (Ø1.5-2.4 in) Pole Diameter	726-01-05-00	726-01-33-00
Mounting Bracket for Ø38-Ø120 mm (Ø1.5-4.7 in) Pole Diameter	726-01-05-12	726-01-33-12
Electrical Characteristics		
Frequency Band	790-960 MHz	
Polarisation	Vertical & Horizontal	
Horizontal Beamwidth (3 dB)	47°	
Vertical Beamwidth (3 dB)	41°	
Forward Gain	11.0 dBi	
Input Impedance	50Ω	
Return Loss	> 14 dB	
Front-to-Back Ratio	20 dB	
Maximum Input Power	250 W	
Lightning Protection	Direct Ground	
Connector(s)	N Socket or 7/16 Socket	
Mechanical Characteristics		
Radiator	PTFE Printed Circuit	
Radiator Feed	Conformable .141” PTFE Cable	
Elements	Aluminium Alloy	
Antenna Base	Sandcast Aluminium Alloy Grade LM25	
Radome Material, Colour	Polyurethane Rotational Moulding, Grey	
Fasteners	Stainless Steel Grade A2-70	
Dimensions (Length)	700 mm	27.6 in
Weight including Clamp	5 kg	11.0 lbs
Wind Load @ 162 km/hr (101 mph)	132 N	29.7 lbf
Mounting Options		
Mounting brackets are ordered separately. See ordering options above.		
Mounting Brackets	Hot Dipped Galvanised Steel	



Horizontal



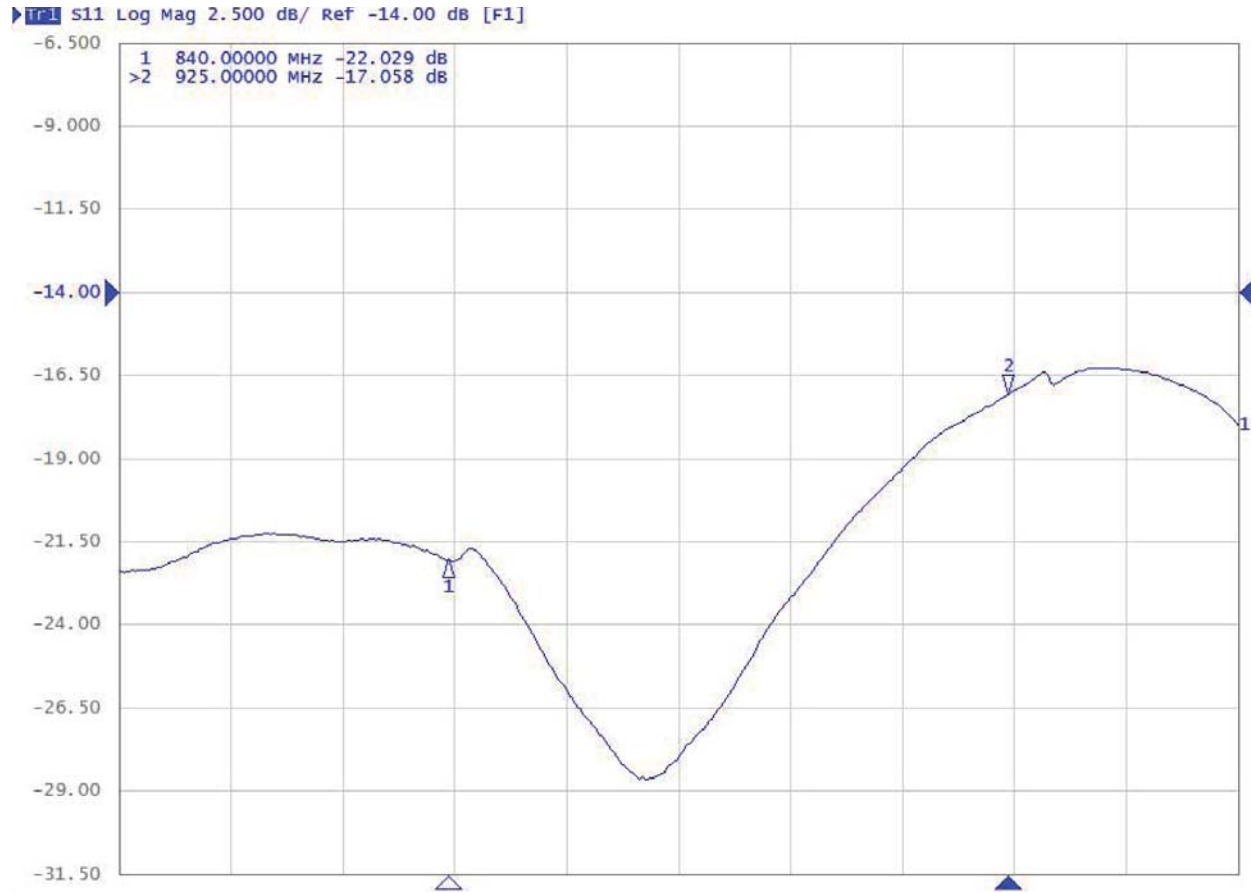
Vertical

Quoted performance parameters are provided to offer typical, peak or range values only and may vary as a result of normal testing, manufacturing and operational conditions. Extreme operational conditions and/or stress on structural supports is beyond our control. Such conditions may result in damage to this product. Improvements to products may be made without notice.

726-01-xx

Single Band | GSM Shrouded Yagi | V & H-Pol | 47° | 11.0 dBi

PIM Chart



Quoted performance parameters are provided to offer typical, peak or range values only and may vary as a result of normal testing, manufacturing and operational conditions. Extreme operational conditions and/or stress on structural supports is beyond our control. Such conditions may result in damage to this product. Improvements to products may be made without notice.