

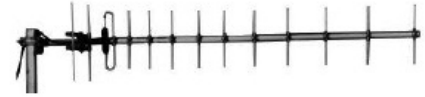
A 12-element UHF Yagi antenna for PMR/Trunked Radio and Broadcast applications that carries UK R.A. approval to MPT1411 for UHF Telemetry. Produced to the highest quality standards these robust antenna designs will insure reliable operation in harsh environmental conditions. Low IMP rated models are available upon request.

7014xxx

V-Pol or H-Pol | 12-Element Yagi | 36° | 12.0 dBd

Replace "xxx" with desired model number option.

Electrical Characteristics	
Frequency range	300..500 MHz
Model number options (xxx)	Model Number
	7014390
	7014400
7014450	Frequency band*
Bandwidth	±4% (typical)
Polarization	Vertical or Horizontal
Horizontal beamwidth	36°
Vertical beamwidth	33°
Gain	12.0 dBd
Impedance	50Ω
VSWR	<1.5:1
Front-to-back ratio	>20 dB
Maximum power	150 W
Connector type	N-Female + 3m of RG213 cable
Lightning protection	DC grounded

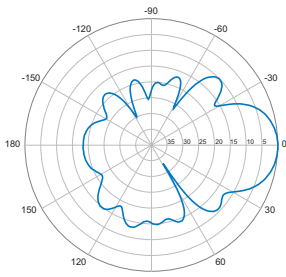


* Other frequencies available upon request.

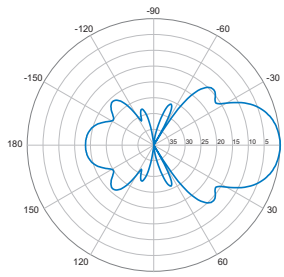
Mechanical Characteristics	
Materials	Boom, 32 mm dia. aluminium, Elements, 12.7 mm dia. aluminium, Balun, fully moulded enclosure
Dimensions (Length)	300 MHz: 3160 mm 124.4 in
	460 MHz: 2150 mm 84.6 in
Weight without bracket	300 MHz: 5.9 kg 13.0 lbs
	460 MHz: 5.0 kg 11.0 lbs
Operational wind speed	162 km/hr 100 mph
Wind load @ 160 km/hr (100 mph)	300 MHz: 207 N 46.5 lbf
	460 MHz: 140 N 31.5 lbf

Mounting Options	
Mounting bracket	3202078/68 + 3201079/00
Alternate mounting brackets	0900912/00, 0302032/68, or 0300064/00 + U-Bolts to match mounting pipe diameter
Mounting accessory (optional)	0900018/00 Trombone 2-point mount

Please order Mounting Bracket separately.



Horizontal



Vertical

Quoted performance parameters are provided to offer typical or range values only and may vary as a result of normal manufacturing and operational conditions. Extreme operational conditions and/or stress on structural supports is beyond our control. Such conditions may result in damage to this product. Improvements to product may be made without notice.