









## 6890600E

6890600EN 6890600EG 6890600ENG

6-Band, 12-Port, 65°, XPOL, Panel Antenna, Variable Tilt, 2699 mm

### ELECTRICAL DOWNTILT CONTROL

For multiband antennas, electrical downtilt for each band can be controlled separately.

Manual Electrical Tilt (MET) Control	A colored knob at the end of the tilt indicator allows change of the tilt without need of a tool. The knob color is identical to the corresponding connector color. The manual tilt 'override' function is always available with no need to remove the physical RET motor.
Remote Electrical Tilt (RET) Control	The remote control of the electrical tilt is managed by a Multi-Device Control Unit (MDCU) or a Multi-Device Dual Unit (MDDU) or a Multi-Device Quadport Unit (MDQU) inserted in the bottom of the antenna. See <i>details below and refer to the ordering options to see which actuators are available with this particular antenna</i> . A single actuator individually controls the tilt of each band (no need for daisy chain cables between the bands). This module does not add any additional length to the antenna.

### RET ACTUATOR

Amphenol's **RET-READY** antennas are delivered with the RET Actuator already installed and pre-commissioned with all antenna parameters. Every RET device is factory configured and calibrated so the antenna is ready to be used once delivered to the site which means that there is no need for further installation of RET devices or for programming their configuration or for running a calibration process.

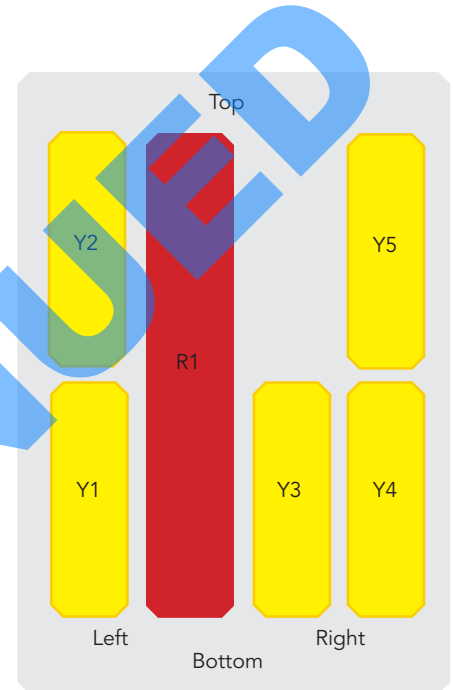
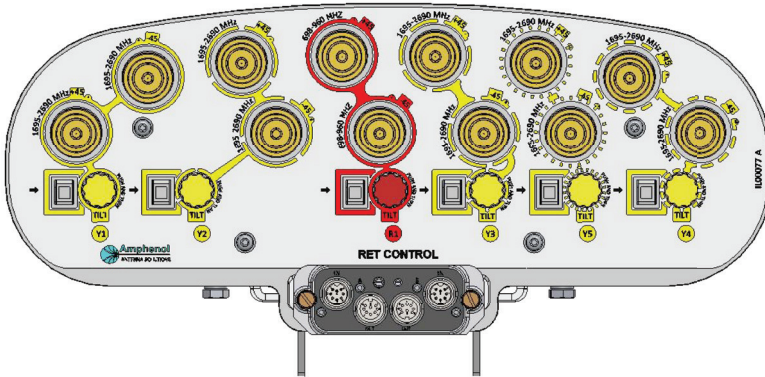
RET-READY ACTUATORS	Multi-Device Control Unit (MDCU). The MDCU is an electronic module that allows the remote control of the electrical downtilt (RET) in Amphenol antennas with factory embedded motors. The MDCU is factory installed. <i>Refer to the ORDERING OPTIONS for availability with this model</i>	
	Multi-Device Dual Unit (MDDU). The MDDU allows two separate RET Controllers to independently drive the RETs in antennas with factory embedded motors (for antenna sharing or two technologies). The MDDU is factory installed. <i>Refer to the ORDERING OPTIONS for availability with this model</i> .	
	Multi-Device Quadport Unit (MDQU). The MDQU allows two separate RET Controllers to independently drive the RETs in antennas with factory embedded motors (for antenna sharing or two technologies). This can be used to enable daisy-chain operation for two operators simultaneously. The MDQU is factory installed.	
Number of RET-READY Actuators	One per antenna	
Input Voltage	+10 to +30 V	
Power Consumption	Idle State	0.5 W
	Operating	4 W typical / 10 W maximum
Protocol	3GPP/AISG 2.0	
Tilt Change Duration	Less than 15 seconds, typical (may vary dependent on antenna type and outdoor temperature)	
Precision	±0.5°	
Tilt Change Capability	50,000 minimum	
RET Interface	1 pair of AISG Male and Female (type IEC60130-9)	
Field Replaceable Unit	Yes	

Quoted performance parameters are provided to offer typical, peak or range values only and may vary as a result of normal testing, manufacturing and operational conditions. Extreme operational conditions and/or stress on structural supports is beyond our control. Such conditions may result in damage to this product. Improvements to products may be made without notice.

## 6890600E

6890600EN 6890600EG 6890600ENG

6-Band, 12-Port, 65°, XPOL, Panel Antenna, Variable Tilt, 2699 mm



ARRAY LAYOUT	ARRAY	FREQUENCY	CONNECTOR	CONNECTOR TYPE
	R1	698-960	1-2	4.3-10 Female or 7/16-DIN Female Long Neck
	Y1	1695-2690	3-4	4.3-10 Female or 7/16-DIN Female Long Neck
	Y2	1695-2690	5-6	4.3-10 Female or 7/16-DIN Female Long Neck
	Y3	1695-2690	7-8	4.3-10 Female or 7/16-DIN Female Long Neck
	Y4	1695-2690	9-10	4.3-10 Female or 7/16-DIN Female Long Neck
Y5	1695-2690	11-12	4.3-10 Female or 7/16-DIN Female Long Neck	

Diagram shown at right depicts the view from the front of the antenna. The illustration is not shown to scale.

### MECHANICAL SPECIFICATIONS

Length	mm (in)	2701 (106.3)	
Width	mm (in)	432 (17.0)	
Depth	mm (in)	153 (6.0)	
Net Weight - Antenna Only	kg (lbs)	34 (74.9)	
Mechanical Distance Between Mounting Points	mm (in)	Refer to Diagram	
Windload (Wind Tunnel Coefficients)	Calculation	km/h (mph)	150 (93.2)
	Frontal	N (lbf)	1350 (303.4)
	Lateral	N (lbf)	450 (101.1)
	Rearside	N (lbf)	1600 (359.6)
Operational Wind Speed	km/h (mph)	160 (99.4)	
Survival Wind Speed	km/h (mph)	200 (124)	
Radome Color	---	Gray RAL7035	
Radome Material	---	FRP	
Lightning Protection	---	Direct Ground	
Shipping	Shipping Dimensions (Length x Width x Depth)	mm (in)	2800 x 498 x 312 (110.2 x 19.6 x 12.2)
	Shipping Weight	kg (lbs)	49 (108.0)
	Shipping Volume	m <sup>3</sup> (ft <sup>3</sup> )	0.435 (15.3)

Quoted performance parameters are provided to offer typical, peak or range values only and may vary as a result of normal testing, manufacturing and operational conditions. Extreme operational conditions and/or stress on structural supports is beyond our control. Such conditions may result in damage to this product. Improvements to products may be made without notice.

## 6890600E

6890600EN 6890600EG 6890600ENG

6-Band, 12-Port, 65°, XPOL, Panel Antenna, Variable Tilt, 2699 mm

### ENVIRONMENTAL SPECIFICATIONS

Environmental Standard	---	ETS 300 019
Operating Temperature	° C (° F)	-40° to +60° (-40° to 140°)
Product Environmental Compliance	---	Product is RoHs Compliant

### ACCESSORIES

All accessories are ordered separately unless otherwise indicated

ITEM	MODEL NUMBER	WEIGHT
Brackets for pole Ø48 to Ø115 mm (Ø1.9 to Ø4.5 in) <b>delivered as standard</b>	0900393/00	5.1 kg (11.2 lbs)
Kit to add mechanical tilt (0° to 10°) to above brackets <b>included</b>	0900394/00	3.1 kg (6.8 lbs)

Wall mounting brackets are available upon request

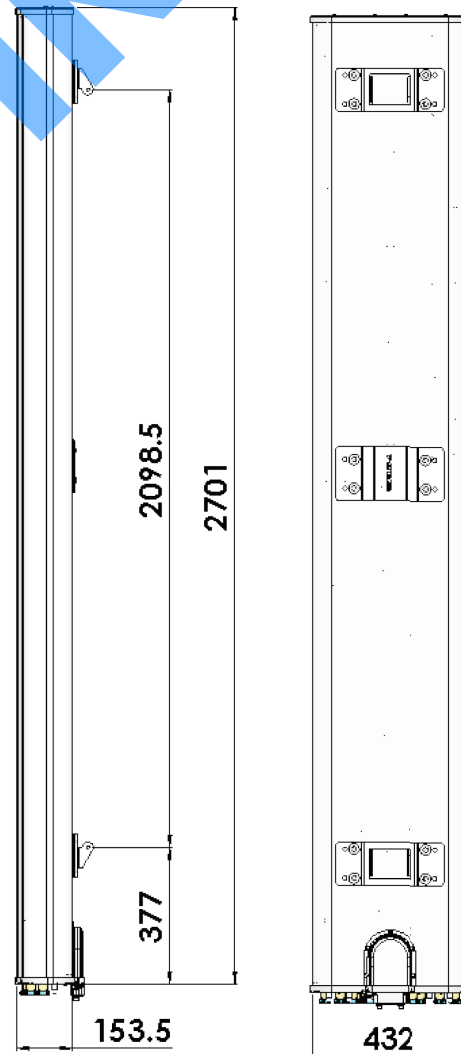
### INSTALLATION

Please read all installation notes before installing this product.



Always attach the antenna by all mounting points.

Do not install the antenna with the connectors facing upwards.



Quoted performance parameters are provided to offer typical, peak or range values only and may vary as a result of normal testing, manufacturing and operational conditions. Extreme operational conditions and/or stress on structural supports is beyond our control. Such conditions may result in damage to this product. Improvements to products may be made without notice.