

## 6876388F00

3-Band, 6-Port, 65°, XPOL, Panel Antenna, Fixed Tilt, 1400 mm

- Dual band antenna, dual polarisation, 6 connectors
- Fixed Tilt

ACCESS PORT DESCRIPTION (CONNECTORS)			
The antenna has 6 colour-coded connectors located at the bottom face.			
Frequency Designation	R1	Y1	Y2
Frequency Range	698-960 MHz	1710-2690 MHz	1710-2690 MHz
Polarisation	Xpol	Xpol	Xpol
Horizontal Beamwidth	65°	65°	65°
Fixed Electrical Downtilt	0°	0°	0°
Connector Type	(2x) 7/16-DIN Female	(2x) 7/16-DIN Female	(2x) 7/16-DIN Female

ELECTRICAL CHARACTERISTICS		R1		
Frequency Bands		698-960 MHz		
		698-806 MHz	790-894 MHz	880-960 MHz
Gain	at Mid Tilt	13.7 dBi	14.0 dBi	14.2 dBi
	Over All Tilts	13.7 ± 1.0 dBi	14.0 ± 1.0 dBi	14.2 ± 1.0 dBi
Input Impedance		50Ω		
VSWR		< 1.5		
Polarisation		±45°		
Horizontal Beamwidth (-3 dB)		65° ± 3.0°	65° ± 3.0°	65° ± 3.0°
Vertical Beamwidth (-3 dB)		15° ± 3.0°	15° ± 3.0°	15° ± 3.0°
Fixed Electrical Downtilt		0°		
Inter Band Isolation		> 25 dB		
Cross-Polar Isolation		≥ 25 dB		
Port-to-Port Isolation		> 25 dB		
First Upper Sidelobe Suppression		> 14 dB	> 14 dB	> 14 dB
Front-to-Back Ratio (@ 180° ± 30°)		> 22 dB	> 23 dB	> 23 dB
Cross Polar Ratio	Main Direction (0°)	> 15 dB	> 15 dB	> 15 dB
	Sector Edges (±60°)	> 8 dB	> 8 dB	> 8 dB
Maximum Average Power Per Port (50° C Ambient Temperature)		250 W		
Intermodulation 3rd Order, 2 x 43 dBm Carrier		< -153 dBc		



Several patents pending regarding this product. Quoted performance parameters are provided to offer typical, peak or range values only and may vary as a result of normal testing, manufacturing and operational conditions. Extreme operational conditions and/or stress on structural supports is beyond our control. Such conditions may result in damage to this product. Improvements to products may be made without notice.

## 6876388F00

3-Band, 6-Port, 65°, XPOL, Panel Antenna, Fixed Tilt, 1400 mm

ELECTRICAL CHARACTERISTICS		Y1				
Frequency Bands		1710-2690 MHz				
		1710-1880 MHz	1850-1990 MHz	1920-2170 MHz	2300-2400 MHz	2500-2690 MHz
Gain	at Mid Tilt	13.7 dBi	13.9 dBi	14.0 dBi	14.5 dBi	14.7 dBi
	Over All Tilts	13.7 ± 1.0 dBi	13.9 ± 1.0 dBi	14.0 ± 1.0 dBi	14.5 ± 1.0 dBi	14.7 ± 1.0 dBi
Input Impedance		50Ω				
VSWR		< 1.5				
Polarisation		±45°				
Horizontal Beamwidth (-3 dB)		65° ± 3°	65° ± 3°	65° ± 3°	62° ± 3°	62° ± 3°
Vertical Beamwidth (-3 dB)		14° ± 3°	14° ± 3°	14° ± 3°	10° ± 3°	10° ± 3°
Fixed Electrical Downtilt		0°				
Inter Band Isolation		> 25 dB				
Cross-Polar Isolation		≥ 25 dB				
Port-to-Port Isolation		> 25 dB				
First Upper Sidelobe Suppression		> 14 dB	> 14 dB	> 14 dB	> 14 dB	> 14 dB
Front-to-Back Ratio (@ 180° ± 30°)		> 22 dB	> 24 dB	> 24 dB	> 24 dB	> 24 dB
Cross Polar Ratio	Main Direction (0°)	> 15 dB	> 15 dB	> 15 dB	> 15 dB	> 15 dB
	Sector Edges (±60°)	> 5.0 dB	> 5.0 dB	> 5.0 dB	> 5.0 dB	> 5.0 dB
Maximum Average Power Per Port (50° C Ambient Temperature)		250 W				
Intermodulation 3rd Order, 2 x 43 dBm Carrier		< -153 dBc				

ELECTRICAL CHARACTERISTICS		Y2				
Frequency Bands		1710-2690 MHz				
		1710-1880 MHz	1850-1990 MHz	1920-2170 MHz	2300-2400 MHz	2500-2690 MHz
Gain	at Mid Tilt	13.7 dBi	13.9 dBi	14.0 dBi	14.5 dBi	14.7 dBi
	Over All Tilts	13.7 ± 1.0 dBi	13.9 ± 1.0 dBi	14.0 ± 1.0 dBi	14.5 ± 1.0 dBi	14.7 ± 1.0 dBi
Input Impedance		50Ω				
VSWR		< 1.5				
Polarisation		±45°				
Horizontal Beamwidth (-3 dB)		65° ± 3°	65° ± 3°	65° ± 3°	62° ± 3°	62° ± 3°
Vertical Beamwidth (-3 dB)		14° ± 3°	14° ± 3°	14° ± 3°	10° ± 3°	10° ± 3°
Fixed Electrical Downtilt		0°				
Inter Band Isolation		> 25 dB				
Cross-Polar Isolation		≥ 25 dB				
Port-to-Port Isolation		> 25 dB				
First Upper Sidelobe Suppression		> 14 dB	> 14 dB	> 14 dB	> 14 dB	> 14 dB
Front-to-Back Ratio (@ 180° ± 30°)		> 22 dB	> 24 dB	> 24 dB	> 24 dB	> 24 dB
Cross Polar Ratio	Main Direction (0°)	> 15 dB	> 15 dB	> 15 dB	> 15 dB	> 15 dB
	Sector Edges (±60°)	> 5.0 dB	> 5.0 dB	> 5.0 dB	> 5.0 dB	> 5.0 dB
Maximum Average Power Per Port (50° C Ambient Temperature)		250 W				
Intermodulation 3rd Order, 2 x 43 dBm Carrier		< -153 dBc				

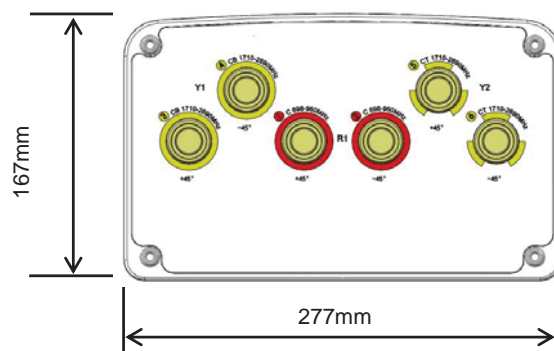
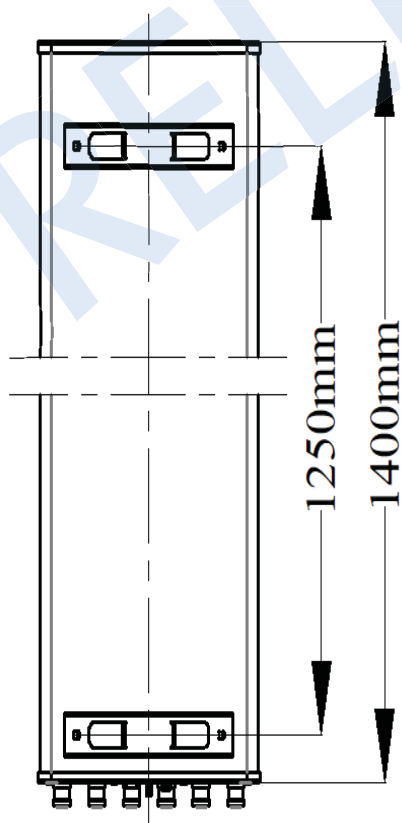
Several patents pending regarding this product. Quoted performance parameters are provided to offer typical, peak or range values only and may vary as a result of normal testing, manufacturing and operational conditions. Extreme operational conditions and/or stress on structural supports is beyond our control. Such conditions may result in damage to this product. Improvements to products may be made without notice.

## 6876388F00

3-Band, 6-Port, 65°, XPOL, Panel Antenna, Fixed Tilt, 1400 mm

ENVIRONMENTAL CHARACTERISTICS	
Operating Temperature Range	-10° C to +60° C
Operating Humidity	95%
Lightning Protection	DC Ground

MECHANICAL CHARACTERISTICS		PACKAGING
Dimensions (Height x Width x Depth)	1400 x 277 x 167 mm	Carton Box 1.565 x 0.375 x 0.275 m
Antenna Weight (without mounting brackets)	8.5 kg	
Shroud Material	UPVC	
Survival Wind Speed	200 km/h	
MOUNTING KIT OPTIONS		MECHANICAL TILT RANGE
All mounting bracket kits are ordered separately unless otherwise indicated.		
Brackets for pole Ø50 to Ø125 mm (included)	0°-16°	



Several patents pending regarding this product. Quoted performance parameters are provided to offer typical, peak or range values only and may vary as a result of normal testing, manufacturing and operational conditions. Extreme operational conditions and/or stress on structural supports is beyond our control. Such conditions may result in damage to this product. Improvements to products may be made without notice.