

694-960 | 694-960 | 1710-2690 | 1710-2690 | 1710-2690 | 1710-2690 | 1710-2690 MHz

5790308G

5790308NG

7-Band, 14-Port, 65°, XPOL, Panel Antenna, Variable Tilt, 2750 mm

- Hepta band antenna, dual polarisation, 14 connectors
- Independent, continuously adjustable tilt on each band 2-12° / 2-12° / 2-12° / 2-12° / 2-12° / 2-12° / 2-12°
- RET version, 3GPP/AISG2.0 with seven integrated RCUs

ACCESS PORT DESCRIPTION (CONNECTORS)

The antenna has 14 colour-coded connectors located at the bottom face.

Frequency Designation	R1	R2	Y1	Y2	Y3	Y4	Y5
Frequency Range	694-960 MHz	694-960 MHz	1710-2690 MHz	1710-2690 MHz	1710-2690 MHz	1710-2690 MHz	1710-2690 MHz
Polarisation	Xpol	Xpol	Xpol	Xpol	Xpol	Xpol	Xpol
Horizontal Beamwidth	65°	65°	65°	65°	65°	65°	65°
Electrical Downtilt Range	2-12°	2-12°	2-12°	2-12°	2-12°	2-12°	2-12°
Connector Type	(2x) 4.3-10 Female (or) 7/16 DIN Female	(2x) 4.3-10 Female (or) 7/16 DIN Female	(2x) 4.3-10 Female (or) 7/16 DIN Female	(2x) 4.3-10 Female (or) 7/16 DIN Female	(2x) 4.3-10 Female (or) 7/16 DIN Female	(2x) 4.3-10 Female (or) 7/16 DIN Female	(2x) 4.3-10 Female (or) 7/16 DIN Female

ORDERING OPTIONS

Select from the different options listed below

SELECT ELECTRICAL DOWNTILT CONTROL & AISG PROTOCOL	SELECT ACTUATOR	SELECT CONNECTOR TYPE	ANTENNA MODEL NUMBER
Manual Electrical Tilt (MET)	---	4.3-10 Female	5790308N
		7/16 DIN Female	5790308
Remote Electrical Tilt (RET) AISG v2.0 / 3GPP	Multi-Device Control Unit (MDCU)	4.3-10 Female	5790308NG
		7/16 DIN Female	5790308G

ELECTRICAL CHARACTERISTICS		R1 / R2		
Frequency Bands		694-960 MHz		
		694-824 MHz	806-896 MHz	880-960 MHz
Gain	at Mid Tilt	15.6 dBi	16.2 dBi	16.6 dBi
	Over All Tilts	15.4 ± 0.5 dBi	16.0 ± 0.5 dBi	16.4 ± 0.5 dBi
Input Impedance		50Ω		
VSWR		< 1.5		
Polarisation		±45°		
Horizontal Beamwidth (-3 dB)		64° ± 4.4°	60° ± 3.6°	58° ± 4.6°
Vertical Beamwidth (-3 dB)		8.8° ± 0.9°	8.0° ± 0.6°	7.2° ± 0.6°
Electrical Downtilt Range		2-12°		
Cross-Polar Isolation		> 26 dB		
Port-to-Port Isolation		> 28 dB (R1,R2 // Y1,Y2,Y3,Y4,Y5), > 25 dB (R1 // R2)		
Upper Sidelobe Suppresson	Typical	> 16 dB	> 16 dB	> 16 dB
	Peak to 20°	> 15 dB	> 15 dB	> 15 dB
Front-to-Back Ratio (@ 180° ± 30°)		> 22 dB	> 23 dB	> 25 dB
Cross Polar Ratio	Main Direction (0°)	> 17 dB	> 18 dB	> 17 dB
	Sector Edges (±60°)	> 7.0 dB	> 7.0 dB	> 8.0 dB
Maximum Power (Per Port)		250 W (at 50° C ambient temperature)		
Intermodulation 3rd Order for 2 x 43 dBm Carrier		< -150 dBc		
Grounding		DC Ground		

Standard values based on NGMN-P-BASTA version 10.0 recommendation.



Several patents pending regarding this product. Quoted performance parameters are provided to offer typical, peak or range values only and may vary as a result of normal testing, manufacturing and operational conditions. Extreme operational conditions and/or stress on structural supports is beyond our control. Such conditions may result in damage to this product. Improvements to products may be made without notice.

5790308G

5790308NG

7-Band, 14-Port, 65°, XPOL, Panel Antenna, Variable Tilt, 2750 mm

ELECTRICAL CHARACTERISTICS		Y1 / Y4				
Frequency Bands		1710-2690 MHz				
		1710-1880	1850-1990	1920-2170	2300-2400	2500-2690
Gain	At Mid Tilt	16.8 dBi	17.1 dBi	17.4 dBi	17.7 dBi	17.4 dBi
	Over All Tilts	16.6 ± 0.6 dBi	16.9 ± 0.5 dBi	17.3 ± 0.6 dBi	17.5 ± 0.5 dBi	17.2 ± 0.5 dBi
Input Impedance		50Ω				
VSWR		< 1.5				
Polarisation		±45°				
Horizontal Beamwidth (-3 dB)		66° ± 6.5°	63° ± 6.5°	62° ± 6.5°	58° ± 6.5°	58° ± 6.5°
Vertical Beamwidth (-3 dB)		7.2° ± 0.6°	6.7° ± 0.6°	6.2° ± 0.6°	5.7° ± 0.6°	5.2° ± 0.6°
Electrical Downtilt Range		2-12°				
Cross Polar Isolation		> 26 dB				
Port-to-Port Isolation		> 28 dB				
Upper Sidelobe Suppression	Typical	> 16 dB	> 16 dB	> 16 dB	> 15 dB	> 15 dB
	Peak to 20°	> 15 dB	> 15 dB	> 15 dB	> 14 dB	> 14 dB
Front-to-Back Ratio (@ 180° ± 30°)		≥ 25 dB	≥ 25 dB	> 25 dB	≥ 26 dB	≥ 26 dB
Cross Polar Discrimination	Main Direction	> 16 dB	> 16 dB	> 17 dB	> 18 dB	> 18 dB
	Sector Edges	> 7.0 dB	> 7.0 dB	> 8.0 dB	> 6.0 dB	> 4.0 dB
Maximum Power (Per Port)		200 W (at 50°C ambient temperature)				
Intermodulation		< -150 dBc				
Grounding		DC Ground				

Standard values based on NGMN-P-BASTA version 10.0 recommendation.

ELECTRICAL CHARACTERISTICS		Y2 / Y5				
Frequency Bands		1710-2690 MHz				
		1710-1880	1850-1990	1920-2170	2300-2400	2500-2690
Gain	At Mid Tilt	16.5 dBi	16.8 dBi	17.1 dBi	17.4 dBi	17.1 dBi
	Over All Tilts	16.3 ± 0.6 dBi	16.6 ± 0.5 dBi	16.8 ± 0.6 dBi	17.2 ± 0.5 dBi	16.8 ± 0.5 dBi
Input Impedance		50Ω				
VSWR		< 1.5				
Polarisation		±45°				
Horizontal Beamwidth (-3 dB)		66° ± 6.5°	63° ± 6.5°	62° ± 6.5°	58° ± 6.5°	58° ± 6.5°
Vertical Beamwidth (-3 dB)		7.2° ± 0.6°	6.7° ± 0.6°	6.2° ± 0.6°	5.7° ± 0.6°	5.2° ± 0.6°
Electrical Downtilt Range		2-12°				
Cross Polar Isolation		> 26 dB				
Port-to-Port Isolation		> 28 dB				
Upper Sidelobe Suppression	Typical	> 16 dB	> 16 dB	> 16 dB	> 15 dB	> 15 dB
	Peak to 20°	> 15 dB	> 15 dB	> 15 dB	> 14 dB	> 14 dB
Front-to-Back Ratio (@ 180° ± 30°)		≥ 25 dB	≥ 25 dB	> 25 dB	≥ 26 dB	≥ 26 dB
Cross Polar Discrimination	Main Direction	> 16 dB	> 16 dB	> 17 dB	> 18 dB	> 18 dB
	Sector Edges	> 7.0 dB	> 7.0 dB	> 8.0 dB	> 6.0 dB	> 4.0 dB
Maximum Power (Per Port)		200 W (at 50°C ambient temperature)				
Intermodulation		< -150 dBc				
Grounding		DC Ground				

Standard values based on NGMN-P-BASTA version 10.0 recommendation.

Several patents pending regarding this product. Quoted performance parameters are provided to offer typical, peak or range values only and may vary as a result of normal testing, manufacturing and operational conditions. Extreme operational conditions and/or stress on structural supports is beyond our control. Such conditions may result in damage to this product. Improvements to products may be made without notice.

5790308G

5790308NG

7-Band, 14-Port, 65°, XPOL, Panel Antenna, Variable Tilt, 2750 mm

ELECTRICAL CHARACTERISTICS		Y3				
		1710-2690 MHz				
Frequency Bands		1710-1880	1850-1990	1920-2170	2300-2400	2500-2690
Gain	At Mid Tilt	16.8 dBi	17.2 dBi	17.6 dBi	17.8 dBi	17.6 dBi
	Over All Tilts	16.6 ± 0.6 dBi	17.0 ± 0.5 dBi	17.4 ± 0.6 dBi	17.6 ± 0.5 dBi	17.4 ± 0.5 dBi
Input Impedance		50Ω				
VSWR		< 1.5				
Polarisation		±45°				
Horizontal Beamwidth (-3 dB)		67° ± 6.5°	65° ± 6.5°	63° ± 6.5°	58° ± 6.5°	58° ± 6.5°
Vertical Beamwidth (-3 dB)		7.2° ± 0.6°	6.7° ± 0.6°	6.2° ± 0.6°	5.7° ± 0.6°	5.2° ± 0.6°
Electrical Downtilt Range		2-12°				
Cross Polar Isolation		> 26 dB				
Port-to-Port Isolation		> 28 dB				
Upper Sidelobe Suppression	Typical	> 16 dB	> 16 dB	> 16 dB	> 15 dB	> 15 dB
	Peak to 20°	> 15 dB	> 15 dB	> 15 dB	> 14 dB	> 14 dB
Front-to-Back Ratio (@ 180° ± 30°)		≥ 26 dB	≥ 26 dB	> 26 dB	≥ 27 dB	≥ 27 dB
Cross Polar Discrimination	Main Direction	> 16 dB	> 16 dB	> 17 dB	> 18 dB	> 18 dB
	Sector Edges	> 7.0 dB	> 7.0 dB	> 8.0 dB	> 6.0 dB	> 4.0 dB
Maximum Power (Per Port)		200 W (at 50°C ambient temperature)				
Intermodulation 3rd (2x43 dBm Carrier)		< -150 dBc				
Grounding		DC Ground				

Standard values based on NGMN-P-BASTA version 10.0 recommendation.

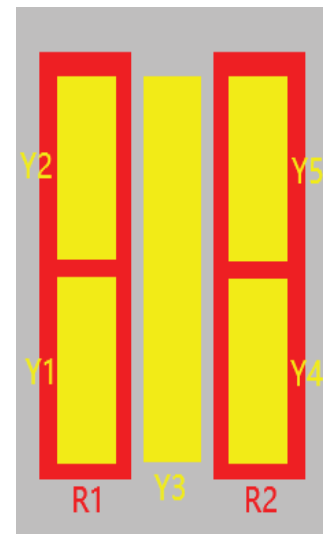
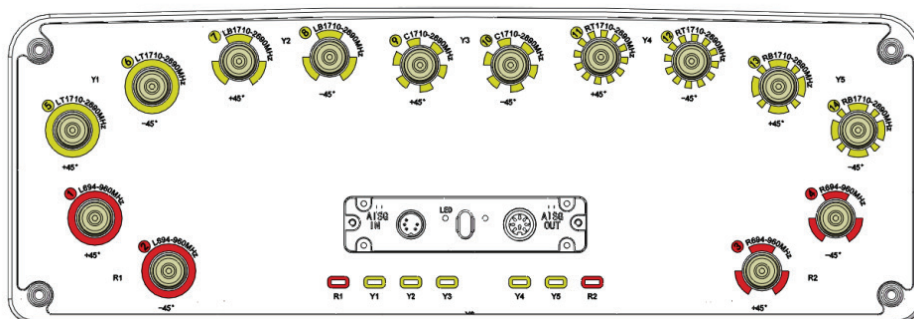
694-960 | 694-960 | 1710-2690 | 1710-2690 | 1710-2690 | 1710-2690 | 1710-2690 MHz

5790308G

5790308NG

7-Band, 14-Port, 65°, XPOL, Panel Antenna, Variable Tilt, 2750 mm

INTEGRATED RET PROPERTIES	
Power Supply	10-30VDC Compliant with 3GPP/AISGv2.0
Power Consumption	≤ 2W (Idle), ≤ 10W (In Motion)
Hardware Interface	RS485 and Power
Logical Interface	HEX Coded Commands Based on HDLC Protocol
Protocol Supported	AISG v2.0
Adjustment Time (Full Range)	< 4Min
Adjustment Cycles	> 20,000
Torque Max	≥ 160 mN.m
Lightning Protection Rating	IEC 61000-4-5 Current Pulse Profile, 8/20 μs 10 Repetitions Min. @ 8 kA
Connectors	(2x) 8-Pin Circle Connector According to IEC 60130-9 and AISG Daisy Chain In: Male; Daisy Chain Out: Female Pin 3: RS485+; Pin 5: RS485-; Pin 6: 10~30V; Pin 7: GND



ARRAY LAYOUT	ARRAY	FREQUENCY	CONNECTOR	CONNECTOR TYPE
	R1	694-960	1-2	4.3-10 Female or 7/16 DIN Female
	R2	694-960	3-4	4.3-10 Female or 7/16 DIN Female
	Y1	1710-2690	5-6	4.3-10 Female or 7/16 DIN Female
	Y2	1710-2690	7-8	4.3-10 Female or 7/16 DIN Female
	Y3	1710-2690	9-10	4.3-10 Female or 7/16 DIN Female
	Y4	1710-2690	11-12	4.3-10 Female or 7/16 DIN Female
	Y5	1710-2690	13-14	4.3-10 Female or 7/16 DIN Female

Diagram shown at right depicts the view from the front of the antenna.
The illustration is not shown to scale.

Several patents pending regarding this product. Quoted performance parameters are provided to offer typical, peak or range values only and may vary as a result of normal testing, manufacturing and operational conditions. Extreme operational conditions and/or stress on structural supports is beyond our control. Such conditions may result in damage to this product. Improvements to products may be made without notice.

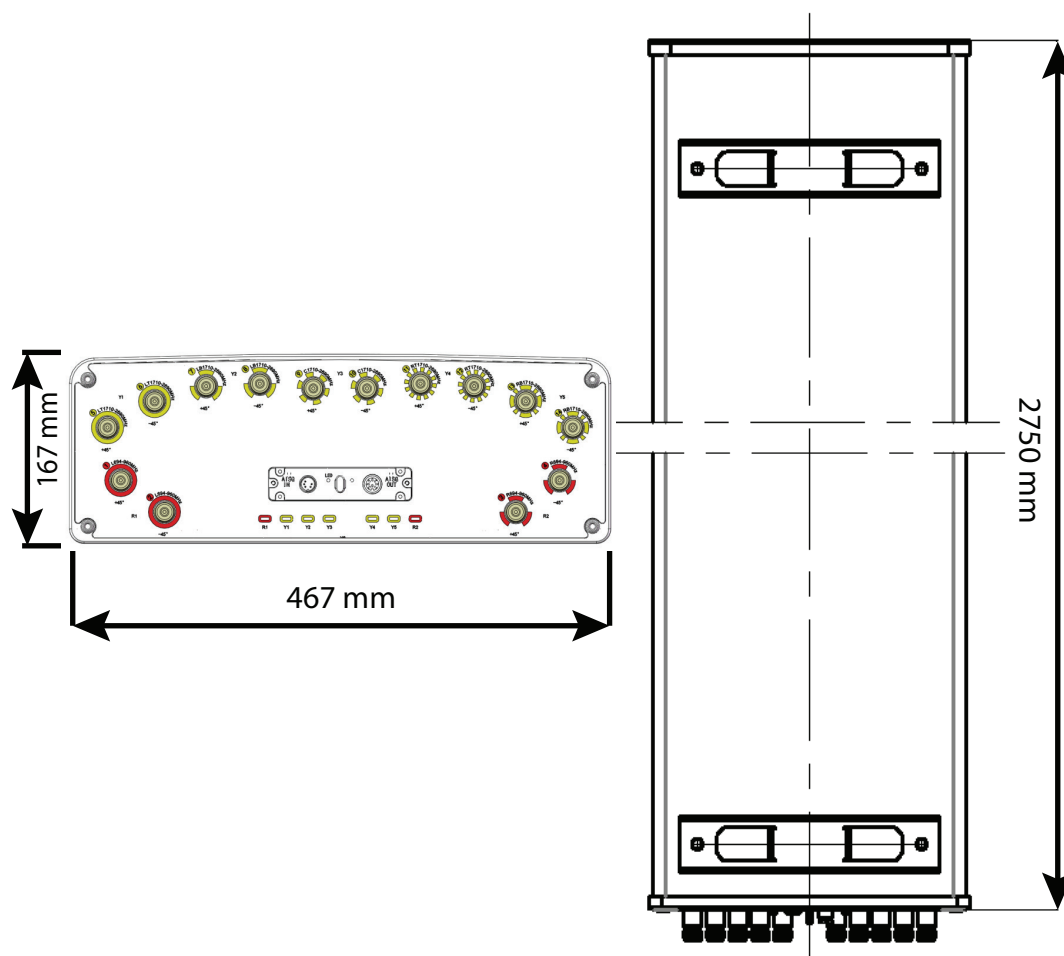
5790308G

5790308NG

7-Band, 14-Port, 65°, XPOL, Panel Antenna, Variable Tilt, 2750 mm

MECHANICAL CHARACTERISTICS		PACKAGING	
Dimensions (Height x Width x Depth)		2750 x 467 x 167 mm (108.2 x 18.3 x 6.5 in)	
Weight (excluding mounting accessory)		44 kg (97.0 lbs)	
Weight with mounting accessory		50 kg (110.2 lbs)	
Radome Material		Fiberglass	
Operating Temperature		-40°C to +60°C	
Maximum Wind Speed		200 km/h	
Wind Load at 150 km/h (93.2 mph)	Frontal	1185 N (266.3 lbf)	
	Rear	1325 N (297.8 lbf)	
	Lateral	525 N (118.0 lbf)	
MOUNTING KIT OPTIONS		POLE DIAMETER	MECHANICAL TILT
All mounting bracket kits are ordered separately unless otherwise indicated.			
Mounting Bracket Kit (Included)		Ø50-Ø125 mm	0°-10°

Carton Box
2.950 x 0.562 x 0.287 m
(116.1 x 22.1 x 11.2 in)



Several patents pending regarding this product. Quoted performance parameters are provided to offer typical, peak or range values only and may vary as a result of normal testing, manufacturing and operational conditions. Extreme operational conditions and/or stress on structural supports is beyond our control. Such conditions may result in damage to this product. Improvements to products may be made without notice.