

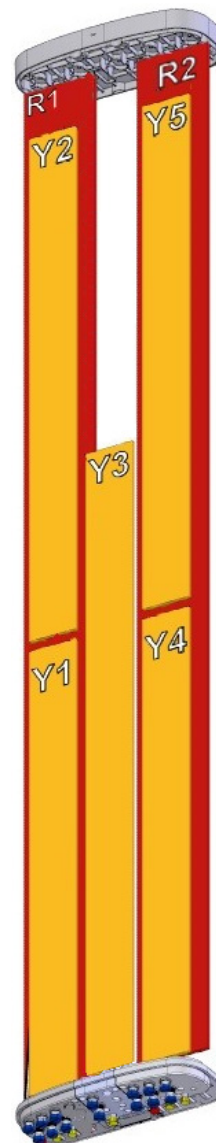
5780500

5780500G 5780500Dx

Hepta Band, 14-Port, 65°, XPOL, Panel Antenna, Variable Tilt, 2697 mm

- Hepta band antenna, dual polarisation, 14 connectors
- Independent tilt on each band 2-12° / 2-12° / 2-12° / 2-12° / 2-12° / 2-12° / 2-12°
- MET and RET versions, 3GPP/AISG2.0, in multiple single RET (multiple device type1) or in Multi-RET (device type 17, with firmware above MD3.10).
- Our patented, RET module controlling all tilt angles, fully inserted inside the antenna (field replaceable).
- 5G optimal integration with optional mMIMO & 8T8R Hybrid Kits (compatibility list available on request).

PRODUCT OVERVIEW	Frequency Range (MHz)	698-960	698-960	1427-2690	1427-2690	1427-2690	1427-2690	1427-2690
	Array	■ R1	■ R2	■ Y1	■ Y2	■ Y3	■ Y4	■ Y5
	Connector	1-2	3-4	5-6	7-8	9-10	11-12	13-14
	Polarization	XPOL	XPOL	XPOL	XPOL	XPOL	XPOL	XPOL
	Azimuth Beamwidth (avg)	65°	65°	65°	65°	65°	65°	65°
	Electrical Downtilt	2-12°	2-12°	2-12°	2-12°	2-12°	2-12°	2-12°
	Dimensions	2697 x 472 x 205 mm						



ORDERING OPTIONS Select from the different options listed below

SELECT ELECTRICAL DOWNTILT CONTROL & AISG PROTOCOL	SELECT ACTUATOR	SELECT CONNECTOR TYPE	ANTENNA MODEL NUMBER
Manual Electrical Tilt (MET)	---	4.3-10 Female	5780500
Remote Electrical Tilt (RET) AISG v2.0 / 3GPP	Multi-Device Control Unit (MDCU)	4.3-10 Female	5780500G
	Multi-Device Dual Unit (MDDU)	4.3-10 Female	5780500Dx*

*Pre-commissioned configuration; Contact Amphenol for further details.



Quoted performance parameters are provided to offer typical, peak or range values only and may vary as a result of normal testing, manufacturing and operational conditions. Extreme operational conditions and/or stress on structural supports is beyond our control. Such conditions may result in damage to this product. Improvements to products may be made without notice.

5G Ready

65°

2697 mm

5780500

5780500G 5780500Dx

Hepta Band, 14-Port, 65°, XPOL, Panel Antenna, Variable Tilt, 2697 mm

ELECTRICAL SPECIFICATIONS Ultra Low Band

■ R1

Frequency Range		MHz	698-960			
		MHz	698-806	790-862	824-894	880-960
Polarization		---	±45°			
Gain	Over all Tilts	dBi	15.6 ± 0.4	16.1 ± 0.4	16.3 ± 0.5	16.6 ± 0.4
Azimuth Beamwidth		degrees	72.7° ± 2.2°	68.0° ± 3.0°	65.8° ± 4.0°	59.5° ± 4.3°
Elevation Beamwidth		degrees	8.4° ± 0.6°	7.5° ± 0.4°	7.2° ± 0.5°	6.7° ± 0.4°
Electrical Downtilt		degrees	2°-12°			
Impedance		Ohms	50			
VSWR (Return Loss)		--- (dB)	< 1.5 (>14)			
Passive Intermodulation 3rd Order for 2 x 20W Carriers		dBc	< -153			
Front-to-Back Ratio, Total Power, ±30°		dB	> 24.2	> 25.4	> 25.7	> 24.8
Upper Sidelobe Suppression, Peak to 20°		dB	> 16.9	> 17.7	> 17.1	> 14.9
Cross Polar Discrimination (XPD) Sector Edges (±60°)		dB	> 10.1	> 8.5	> 8.5	> 7.5
Maximum Effective Power Per Port		Watts	250 W			
Inter/Intra Cluster Isolation		dB	> 25			

All parameters are compliant with BASTA revision V11.1

ELECTRICAL SPECIFICATIONS Ultra Low Band

■ R2

Frequency Range		MHz	698-960			
		MHz	698-806	790-862	824-894	880-960
Polarization		---	±45°			
Gain	Over all Tilts	dBi	15.6 ± 0.5	16.0 ± 0.4	16.3 ± 0.6	16.6 ± 0.4
Azimuth Beamwidth		degrees	73.5° ± 3.3°	69.0° ± 3.9°	65.4° ± 5.5°	60.1° ± 3.6°
Elevation Beamwidth		degrees	8.4° ± 0.7°	7.5° ± 0.5°	7.2° ± 0.5°	6.6° ± 0.4°
Electrical Downtilt		degrees	2°-12°			
Impedance		Ohms	50			
VSWR (Return Loss)		--- (dB)	< 1.5 (>14)			
Passive Intermodulation 3rd Order for 2 x 20W Carriers		dBc	< -153			
Front-to-Back Ratio, Total Power, ±30°		dB	> 23.8	> 23.3	> 23.7	> 25.2
Upper Sidelobe Suppression, Peak to 20°		dB	> 17.8	> 18.3	> 17.6	> 15.2
Cross Polar Discrimination (XPD) Sector Edges (±60°)		dB	> 9.3	> 7.6	> 7.7	> 7.6
Maximum Effective Power Per Port		Watts	250 W			
Inter/Intra Cluster Isolation		dB	> 25			

All parameters are compliant with BASTA revision V11.1

Quoted performance parameters are provided to offer typical, peak or range values only and may vary as a result of normal testing, manufacturing and operational conditions. Extreme operational conditions and/or stress on structural supports is beyond our control. Such conditions may result in damage to this product. Improvements to products may be made without notice.

5G Ready

65°

2697 mm

5780500

5780500G 5780500Dx

Hepta Band, 14-Port, 65°, XPOL, Panel Antenna, Variable Tilt, 2697 mm

ELECTRICAL SPECIFICATIONS MEGA Wide Band

Y1

Frequency Range		MHz	1427-2690				
		MHz	1427-1518	1695-1880	1920-2180	2300-2500	2490-2690
Polarization		---	±45°				
Gain	Over all Tilts	dBi	15.8 ± 0.5	16.4 ± 0.4	17.1 ± 0.3	17.2 ± 0.3	17.3 ± 0.4
Azimuth Beamwidth		degrees	70.1° ± 3.6°	68.8° ± 3.1°	66.7° ± 3.2°	66.3° ± 2.6°	63.1° ± 3.6°
Elevation Beamwidth		degrees	9.1° ± 0.5°	7.5° ± 0.5°	6.6° ± 0.5°	5.7° ± 0.4°	5.2° ± 0.2°
Electrical Downtilt		degrees	2°-12°				
Impedance		Ohms	50				
VSWR (Return Loss)		--- (dB)	< 1.5 (>14)				
Passive Intermodulation 3rd Order for 2 x 20W Carriers		dBc	< -153				
Front-to-Back Ratio, Total Power, ±30°		dB	> 23.6	> 27.6	> 27.8	> 26.9	> 27.2
Upper Sidelobe Suppression, Peak to 20°		dB	> 16.0	> 17.0	> 18.1	> 16.5	> 15.6
Cross Polar Discrimination (XPD) Sector Edges (±60°)		dB	> 7.0	> 7.5	> 9.6	> 7.2	> 7.2
Maximum Effective Power Per Port		Watts	200 W				
Inter/Intra Cluster Isolation		dB	> 25				

All parameters are compliant with BASTA revision V11.1

ELECTRICAL SPECIFICATIONS MEGA Wide Band

Y2

Frequency Range		MHz	1427-2690				
		MHz	1427-1518	1695-1880	1920-2180	2300-2500	2490-2690
Polarization		---	±45°				
Gain	Over all Tilts	dBi	15.8 ± 0.4	16.5 ± 0.4	17.0 ± 0.4	17.1 ± 0.4	17.5 ± 0.4
Azimuth Beamwidth		degrees	69.4° ± 4.3°	66.3° ± 4.8°	66.9° ± 4.0°	64.1° ± 3.9°	63.5° ± 5.5°
Elevation Beamwidth		degrees	8.9° ± 0.3°	7.3° ± 0.5°	6.4° ± 0.6°	5.5° ± 0.3°	5.1° ± 0.3°
Electrical Downtilt		degrees	2°-12°				
Impedance		Ohms	50				
VSWR (Return Loss)		--- (dB)	< 1.5 (>14)				
Passive Intermodulation 3rd Order for 2 x 20W Carriers		dBc	< -153				
Front-to-Back Ratio, Total Power, ±30°		dB	> 23.6	> 27.2	> 27.9	> 27.2	> 28.1
Upper Sidelobe Suppression, Peak to 20°		dB	> 15.7	> 17.7	> 18.8	> 17.2	> 15.2
Cross Polar Discrimination (XPD) Sector Edges (±60°)		dB	> 9.8	> 7.0	> 9.0	> 6.9	> 6.6
Maximum Effective Power Per Port		Watts	200 W				
Inter/Intra Cluster Isolation		dB	> 25				

All parameters are compliant with BASTA revision V11.1

Quoted performance parameters are provided to offer typical, peak or range values only and may vary as a result of normal testing, manufacturing and operational conditions. Extreme operational conditions and/or stress on structural supports is beyond our control. Such conditions may result in damage to this product. Improvements to products may be made without notice.

5G Ready

65°

2697 mm

5780500

5780500G 5780500Dx

Hepta Band, 14-Port, 65°, XPOL, Panel Antenna, Variable Tilt, 2697 mm

ELECTRICAL SPECIFICATIONS MEGA Wide Band

■ Y3

Frequency Range		MHz	1427-2690				
		MHz	1427-1518	1695-1880	1920-2180	2300-2500	2490-2690
Polarization		---	±45°				
Gain	Over all Tilts	dBi	15.8 ± 0.4	17.1 ± 0.4	17.5 ± 0.6	17.2 ± 0.2	17.6 ± 0.5
Azimuth Beamwidth		degrees	71.8° ± 3.5°	62.0° ± 4.0°	61.8° ± 3.7°	62.1° ± 3.1°	62.1° ± 4.2°
Elevation Beamwidth		degrees	7.3° ± 0.5°	6.3° ± 0.4°	5.5° ± 0.5°	4.9° ± 0.3°	4.4° ± 0.3°
Electrical Downtilt		degrees	2°-12°				
Impedance		Ohms	50				
VSWR (Return Loss)		--- (dB)	< 1.5 (>14)				
Passive Intermodulation 3rd Order for 2 x 20W Carriers		dBc	< -153				
Front-to-Back Ratio, Total Power, ±30°		dB	> 28.2	> 29.8	> 28.2	> 27.3	> 26.7
Upper Sidelobe Suppression, Peak to 20°		dB	> 15.1	> 14.5	> 14.6	> 14.3	> 12.1
Cross Polar Discrimination (XPD) Sector Edges (±60°)		dB	> 9.9	> 9.3	> 8.3	> 8.2	> 8.8
Maximum Effective Power Per Port		Watts	200 W				
Inter/Intra Cluster Isolation		dB	> 25				

All parameters are compliant with BASTA revision V11.1

ELECTRICAL SPECIFICATIONS MEGA Wide Band

■ Y4

Frequency Range		MHz	1427-2690				
		MHz	1427-1518	1695-1880	1920-2180	2300-2500	2490-2690
Polarization		---	±45°				
Gain	Over all Tilts	dBi	15.7 ± 0.5	16.5 ± 0.5	17.0 ± 0.4	17.1 ± 0.4	17.3 ± 0.4
Azimuth Beamwidth		degrees	69.1° ± 4.1°	68.8° ± 3.9°	67.1° ± 3.9°	65.9° ± 3.2°	61.8° ± 5.2°
Elevation Beamwidth		degrees	9.0° ± 0.5°	7.5° ± 0.5°	6.5° ± 0.5°	5.7° ± 0.4°	5.2° ± 0.3°
Electrical Downtilt		degrees	2°-12°				
Impedance		Ohms	50				
VSWR (Return Loss)		--- (dB)	< 1.5 (>14)				
Passive Intermodulation 3rd Order for 2 x 20W Carriers		dBc	< -153				
Front-to-Back Ratio, Total Power, ±30°		dB	> 23.5	> 27.1	> 28.6	> 28.1	> 25.8
Upper Sidelobe Suppression, Peak to 20°		dB	> 14.7	> 18.3	> 18.1	> 15.7	> 16.1
Cross Polar Discrimination (XPD) Sector Edges (±60°)		dB	> 8.9	> 6.7	> 9.1	> 7.5	> 6.9
Maximum Effective Power Per Port		Watts	200 W				
Inter/Intra Cluster Isolation		dB	> 25				

All parameters are compliant with BASTA revision V11.1

Quoted performance parameters are provided to offer typical, peak or range values only and may vary as a result of normal testing, manufacturing and operational conditions. Extreme operational conditions and/or stress on structural supports is beyond our control. Such conditions may result in damage to this product. Improvements to products may be made without notice.

5G Ready

65°

2697 mm

5780500

5780500G 5780500Dx

Hepta Band, 14-Port, 65°, XPOL, Panel Antenna, Variable Tilt, 2697 mm

ELECTRICAL SPECIFICATIONS MEGA Wide Band

■ Y5

Frequency Range		MHz	1427-2690				
		MHz	1427-1518	1695-1880	1920-2180	2300-2500	2490-2690
Polarization		---	±45°				
Gain	Over all Tilts	dBi	15.7 ± 0.5	16.5 ± 0.4	17.0 ± 0.3	17.1 ± 0.4	17.5 ± 0.5
Azimuth Beamwidth		degrees	70.5° ± 3.8°	68.2° ± 3.7°	67.6° ± 3.1°	63.8° ± 3.1°	62.4° ± 4.8°
Elevation Beamwidth		degrees	8.7° ± 0.4°	7.2° ± 0.5°	6.3° ± 0.6°	5.5° ± 0.4°	5.1° ± 0.3°
Electrical Downtilt		degrees	2°-12°				
Impedance		Ohms	50				
VSWR (Return Loss)		--- (dB)	< 1.5 (>14)				
Passive Intermodulation 3rd Order for 2 x 20W Carriers		dBc	< -153				
Front-to-Back Ratio, Total Power, ±30°		dB	> 24.5	> 26.1	> 28.1	> 28.5	> 26.7
Upper Sidelobe Suppression, Peak to 20°		dB	> 14.9	> 17.1	> 17.1	> 16.3	> 15.1
Cross Polar Discrimination (XPD) Sector Edges (±60°)		dB	> 7.1	> 6.7	> 7.8	> 7.4	> 6.4
Maximum Effective Power Per Port		Watts	200 W				
Inter/Intra Cluster Isolation		dB	> 25				

All parameters are compliant with BASTA revision V11.1

Quoted performance parameters are provided to offer typical, peak or range values only and may vary as a result of normal testing, manufacturing and operational conditions. Extreme operational conditions and/or stress on structural supports is beyond our control. Such conditions may result in damage to this product. Improvements to products may be made without notice.

5G Ready

65°

2697 mm

5780500

5780500G 5780500Dx

Hepta Band, 14-Port, 65°, XPOL, Panel Antenna, Variable Tilt, 2697 mm

ELECTRICAL DOWNTILT CONTROL

For multiband antennas, electrical downtilt for each band can be controlled separately.

Manual Electrical Tilt (MET) Control	A colored knob at the end of the tilt indicator allows change of the tilt without need of a tool. The knob color is identical to the corresponding connector color. The manual tilt 'override' function is always available with no need to remove the physical RET motor.
Remote Electrical Tilt (RET) Control	The remote control of the electrical tilt is managed by a Multi-Device Control Unit (MDCU) or a Multi-Device Dual Unit (MDDU) inserted in the bottom of the antenna. See details below and refer to the ordering options to see which actuators are available with this particular antenna. A single actuator individually controls the tilt of each band (no need for daisy chain cables between the bands). This module does not add any additional length to the antenna.

RET ACTUATOR

Amphenol's RET-READY antennas are delivered with the RET Actuator already installed and pre-commissioned with all antenna parameters. Every RET device is factory configured and calibrated so the antenna is ready to be used once delivered to the site which means that there is no need for further installation of RET devices or for programming their configuration or for running a calibration process.

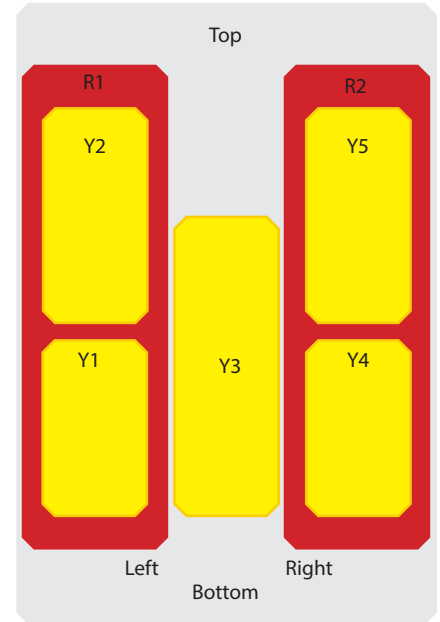
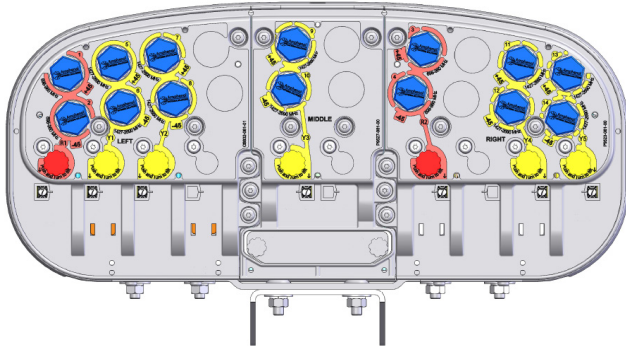
RET-READY ACTUATORS	Multi-Device Control Unit (MDCU). The MDCU is an electronic module that allows the remote control of the electrical downtilt (RET) in Amphenol antennas with factory embedded motors. The MDCU is factory installed. Refer to the ORDERING OPTIONS for availability with this model.	
	Multi-Device Dual Unit (MDDU). The MDDU allows two separate RET Controllers to independently drive the RETs in antennas with factory embedded motors (for antenna sharing or two technologies). The MDDU is factory installed. Refer to the ORDERING OPTIONS for availability with this model.	
Number of RET-READY Actuators	One per antenna	
Input Voltage	+10 to +30 V	
Power Consumption	Idle State (AISG P1)	0.5 W
	High Power Mode (AISG P2)	3 W
Protocol	3GPP/AISG 2.0	
Tilt Change Duration	Less than 15 seconds, typical (may vary dependent on antenna type and outdoor temperature)	
Precision	±0.5°	
Tilt Change Capability	50,000 minimum	
RET Interface	MDCU	One pair of AISG Male and Female (type IEC60130-9)
	MDDU	Two male AISG 8 pin connectors (type IEC60130-9 Ed 3.0)
Field Replaceable Unit	Yes	

Quoted performance parameters are provided to offer typical, peak or range values only and may vary as a result of normal testing, manufacturing and operational conditions. Extreme operational conditions and/or stress on structural supports is beyond our control. Such conditions may result in damage to this product. Improvements to products may be made without notice.

5780500

5780500G 5780500Dx

Hepta Band, 14-Port, 65°, XPOL, Panel Antenna, Variable Tilt, 2697 mm



ARRAY LAYOUT	ARRAY	FREQUENCY	CONNECTOR	CONNECTOR TYPE
	R1	698-960	1-2	4.3-10 Female
	R2	698-960	3-4	4.3-10 Female
	Y1	1427-2690	5-6	4.3-10 Female
	Y2	1427-2690	7-8	4.3-10 Female
	Y3	1427-2690	9-10	4.3-10 Female
	Y4	1427-2690	11-12	4.3-10 Female
	Y5	1427-2690	13-14	4.3-10 Female

Diagram shown at right depicts the view from the front of the antenna. The illustration is not shown to scale.

MECHANICAL SPECIFICATIONS

Length	mm (in)	2697 (106.1)	
Width	mm (in)	472 (18.6)	
Depth	mm (in)	205 (8.0)	
Net Weight - Antenna Only	kg (lbs)	59.5 (130)	
Mechanical Distance Between Mounting Points	mm (in)	Refer to Diagram	
Windload (EN 1991-1-4:2005 using Wind Tunnel Coefficients)	Calculation	km/h (mph)	150 (93.2)
	Frontal	N (lbf)	989 (222.3)
	Lateral	N (lbf)	628 (141.2)
	Rearside	N (lbf)	998 (224.4)
Operational Wind Speed	km/h (mph)	160 (99.4)	
Survival Wind Speed	km/h (mph)	240 (149)	
Radome Color	---	Gray RAL7035	
Radome Material	---	Outdoor Fiberglass	
Lightning Protection	---	Direct Ground	
Shipping	Shipping Dimensions (Length x Width x Depth)	mm (in)	2940 x 540 x 370 (115.7 x 21.2 x 14.5)
	Shipping Weight	kg (lbs)	70.5 (154.3)
	Shipping Volume	m ³ (ft ³)	0.587 (20.7)

Quoted performance parameters are provided to offer typical, peak or range values only and may vary as a result of normal testing, manufacturing and operational conditions. Extreme operational conditions and/or stress on structural supports is beyond our control. Such conditions may result in damage to this product. Improvements to products may be made without notice.

5780500

5780500G 5780500Dx

Hepta Band, 14-Port, 65°, XPOL, Panel Antenna, Variable Tilt, 2697 mm

ENVIRONMENTAL SPECIFICATIONS

Environmental Standard	---	ETS 300 019
Operating Temperature	° C (° F)	-40° to +60° (-40° to 140°)
Product Environmental Compliance	---	Product is RoHs Compliant

ACCESSORIES All accessories are ordered separately unless otherwise indicated

ITEM	MODEL NUMBER	WEIGHT
Brackets for pole Ø48 to Ø115 mm (Ø1.9 to Ø4.5 in) delivered as standard	O8464	3.4 kg (7.5 lbs)
Brackets for pole Ø70 to Ø150 mm (Ø2.8-Ø5.9 in) optional	O8465	3.9 kg (8.6 lbs)
Kit to add mechanical tilt (0° to 10°) to above brackets optional	0900396/00	2.3 kg (5.1 lbs)

INSTALLATION Please read all installation notes before installing this product.

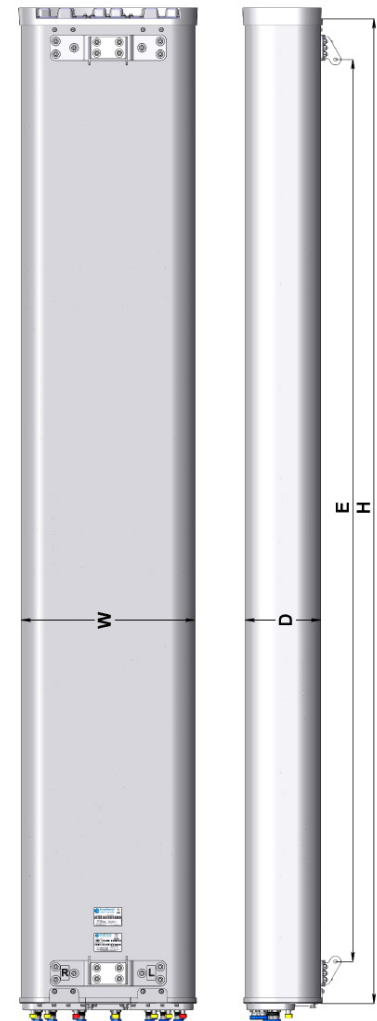


Always attach the antenna by all mounting points.

Do not install the antenna with the connectors facing upwards.

MAIN DIMENSIONS

Dimension	Symbol	Unit	Value
Length	H	mm (in)	2697 (106.1)
Width	W	mm (in)	472 (18.6)
Depth	D	mm (in)	205 (8.0)
Distance between mounting points	E	mm (in)	2471 (97.3)



Quoted performance parameters are provided to offer typical, peak or range values only and may vary as a result of normal testing, manufacturing and operational conditions. Extreme operational conditions and/or stress on structural supports is beyond our control. Such conditions may result in damage to this product. Improvements to products may be made without notice.