

2C6U4MT360X12Fwxys2



Features

- Dual antennas integrated under a single radome
- 5G Pseudo Omni configuration with 24 connectors
- Ideal for Small Cell / DAS applications
- This antenna meets the requirements of the U-NII
- Available for order with a grey, brown or black radome

PRODUCT OVERVIEW	Frequency Range (MHz)	LOW (2x) 696-960		MID (6x) 1695-2700						CBRS (2x) 3550-3700		LAA (2x) 5150-5925	
	Array	■ R1	■ R2	■ Y1	■ Y2	■ Y3	■ Y4	■ Y5	■ Y6	■ P1	■ P2	■ O1	■ O2
	Connector	1-2	3-4	5-6	7-8	9-10	11-12	13-14	15-16	17-18	19-20	21-22	23-24
	Polarization	XPOL	XPOL	XPOL	XPOL	XPOL	XPOL	XPOL	XPOL	XPOL	XPOL	XPOL	XPOL
	Azimuth Beamwidth (avg)	360°		360°						360°		360°	
	Electrical Downtilt	0°		2°, 4°, 6°						0°		0°	
	Configuration	OMNI CONFIGURATION											
	Total Connector Count	24 PORTS											
	Connector Type	4.3-10 FEMALE											
	Dimensions	1219 x Ø371 mm (48.0 x Ø14.6 in)											
Radome Color Options	GREY, BROWN or BLACK												

ELECTRICAL SPECIFICATIONS Low Band

■ R1 ■ R2

Frequency Range		MHz	(2x) 696-960	
Frequency Sub-Range		MHz	696-806	806-960
Polarization		---	(2x) ±45°	
Gain	BASTA	dBi	3.4 ± 0.7	2.9 ± 0.8
	MAX	dBi	4.1	3.7
Azimuth Beamwidth (3 dB)		degrees	360°	
Elevation Beamwidth (3 dB)		degrees	86.4° ± 20.6°	
Electrical Downtilt		degrees	(w) 0°	
Impedance		Ohms	50	
VSWR		---	≤ 1.5:1	
Passive Intermodulation 3rd Order for 2x20 W Carriers		dBc	< -153	
Upper Sidelobe Suppression		dB	> 12	> 12
Isolation	Intraband	dB	25	
	Interband	dB	> 28	
Input Power		Watts	500W	

Quoted performance parameters are provided to offer typical, peak or range values only and may vary as a result of normal testing, manufacturing and operational conditions. Extreme operational conditions and/or stress on structural supports is beyond our control. Such conditions may result in damage to this product. Improvements to products may be made without notice.

2C6U4MT360X12Fwxys2

ELECTRICAL SPECIFICATIONS Mid Band

■ Y1 ■ Y2 ■ Y3 ■ Y4 ■ Y5 ■ Y6

Frequency Range	MHz	(6x) 1695-2700				
Frequency Sub-Range	MHz	1695-1880	1850-1990	1920-2200	2300-2700	
Polarization	---	(6x) ±45°				
Gain	BASTA	dBi	7.9 ± 0.7	8.3 ± 0.6	8.4 ± 0.6	9.2 ± 0.7
	MAX	dBi	8.6	8.9	9.0	9.9
Azimuth Beamwidth (3 dB)	degrees	360°				
Elevation Beamwidth (3 dB)	degrees	23.5° ± 2.7°	21.9° ± 2.4°	20.8° ± 2.3°	17.4° ± 2.0°	
Electrical Downtilt	degrees	(x) 2°, 4°, 6°				
Impedance	Ohms	50				
VSWR	---	≤ 1.5:1				
Passive Intermodulation 3rd Order for 2x20 W Carriers	dBc	< -153				
Upper Sidelobe Suppression	dB	> 12	> 12	> 12	> 12	
Isolation	Intraband	dB	25			
	Interband	dB	> 28			
Input Power	Watts	300W				

ELECTRICAL SPECIFICATIONS CBRS Band

■ P1 ■ P2

Frequency Range	MHz	(2x) 3550-3700	
Polarization	---	(2x) ±45°	
Gain	BASTA	dBi	4.6 ± 0.8
	MAX	dBi	5.4
Azimuth Beamwidth (3 dB)	degrees	360°	
Elevation Beamwidth (3 dB)	degrees	37.8 ± 4.6°	
Electrical Downtilt	degrees	(y) 0°	
Impedance	Ohms	50	
VSWR	---	≤ 1.5:1	
Passive Intermodulation 3rd Order for 2x20 W Carriers	dBc	N/A	
Upper Sidelobe Suppression	dB	> 14	
Isolation	Intraband	dB	25
	Interband	dB	> 28
Input Power	Watts	100W	

Quoted performance parameters are provided to offer typical, peak or range values only and may vary as a result of normal testing, manufacturing and operational conditions. Extreme operational conditions and/or stress on structural supports is beyond our control. Such conditions may result in damage to this product. Improvements to products may be made without notice.

2C6U4MT360X12Fwxys2

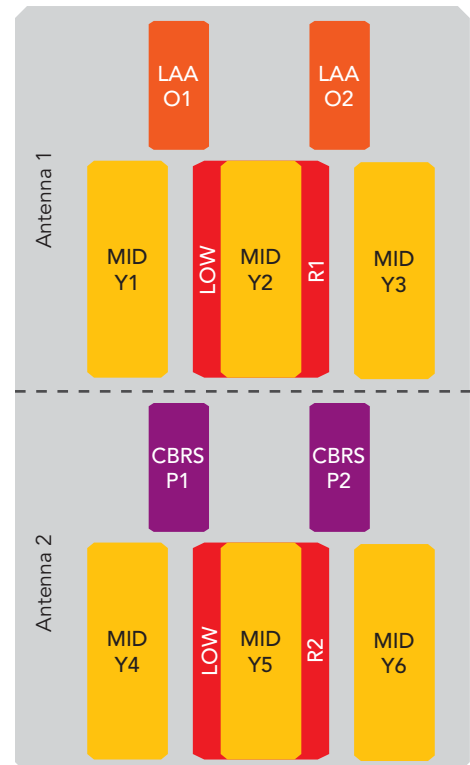
ELECTRICAL SPECIFICATIONS LAA Band

■ O1 ■ O2

Frequency Range	MHz	(2x) 5150-5925	
Polarization	---	(2x) ±45°	
Gain	BASTA	dBi	5.0 ± 0.7
	MAX	dBi	5.7
Azimuth Beamwidth (3 dB)	degrees	360°	
Elevation Beamwidth (3 dB)	degrees	22.6° ± 2.9°	
Electrical Downtilt	degrees	(y) 0°	
Impedance	Ohms	50Ω	
VSWR	---	≤ 1.5:1	
Passive Intermodulation 3rd Order for 2x20 W Carriers	dBc	N/A	
Upper Sidelobe Suppression	dB	Meets FCC requirements upper pattern control for use in LAA outdoor network	
Isolation	Intraband	dB	25
	Interband	dB	> 28
Input Power	Watts	50W	
U-NII Compliant	---	Yes	

ARRAY LAYOUT	ARRAY	FREQUENCY	CONNECTOR	CONNECTOR TYPE
	■ R1	696-960	1-2	4.3-10 Female
	■ R2	696-960	3-4	4.3-10 Female
	■ Y1	1695-2700	5-6	4.3-10 Female
	■ Y2	1695-2700	7-8	4.3-10 Female
	■ Y3	1695-2700	9-10	4.3-10 Female
	■ Y4	1695-2700	11-12	4.3-10 Female
	■ Y5	1695-2700	13-14	4.3-10 Female
	■ Y6	1695-2700	15-16	4.3-10 Female
	■ P1	3550-3700	17-18	4.3-10 Female
	■ P2	3550-3700	19-20	4.3-10 Female
	■ O1	5150-5925	21-22	4.3-10 Female
	■ O2	5150-5925	23-24	4.3-10 Female

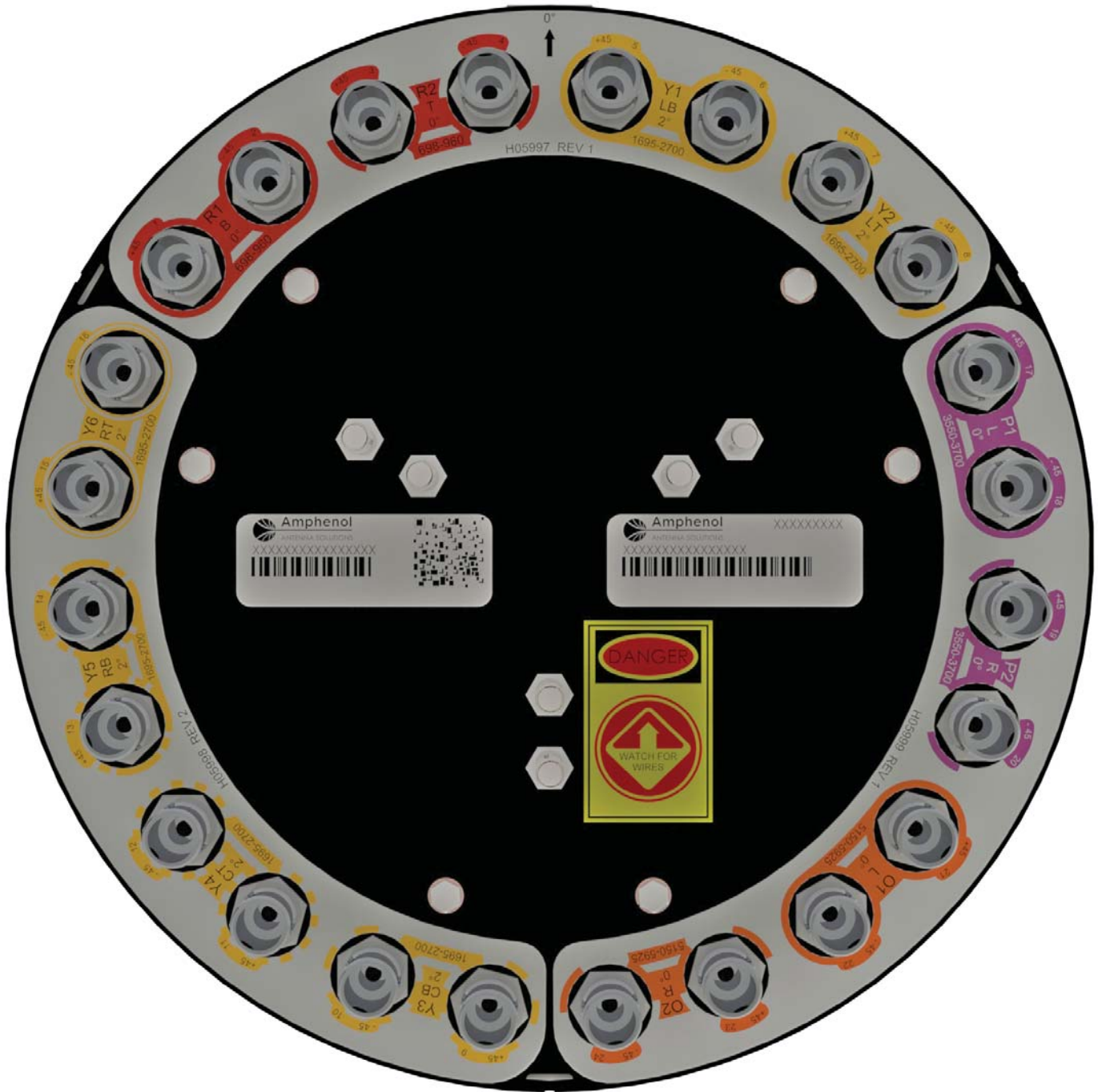
The illustration at right is not shown to scale.



Quoted performance parameters are provided to offer typical, peak or range values only and may vary as a result of normal testing, manufacturing and operational conditions. Extreme operational conditions and/or stress on structural supports is beyond our control. Such conditions may result in damage to this product. Improvements to products may be made without notice.

2C6U4MT360X12Fwxys2

BOTTOM VIEW - LABELING

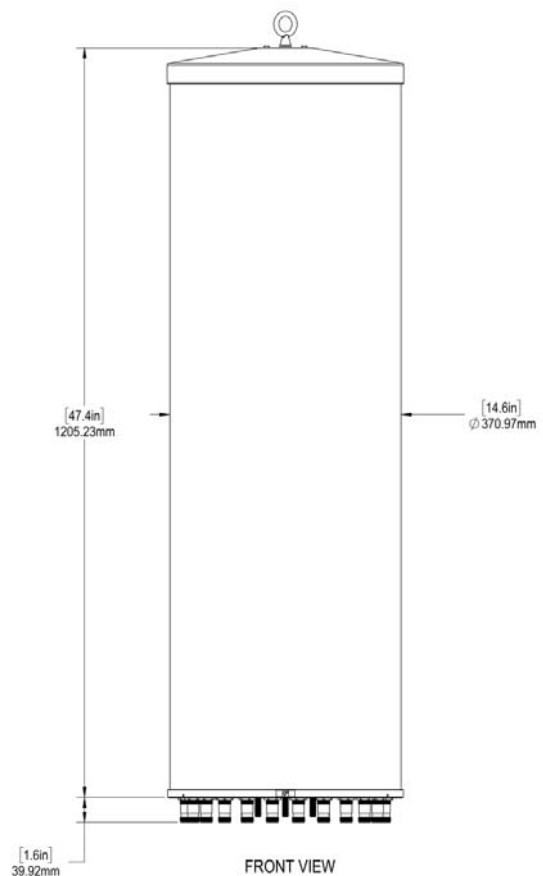


Quoted performance parameters are provided to offer typical, peak or range values only and may vary as a result of normal testing, manufacturing and operational conditions. Extreme operational conditions and/or stress on structural supports is beyond our control. Such conditions may result in damage to this product. Improvements to products may be made without notice.

2C6U4MT360X12Fwxys2

MECHANICAL SPECIFICATIONS

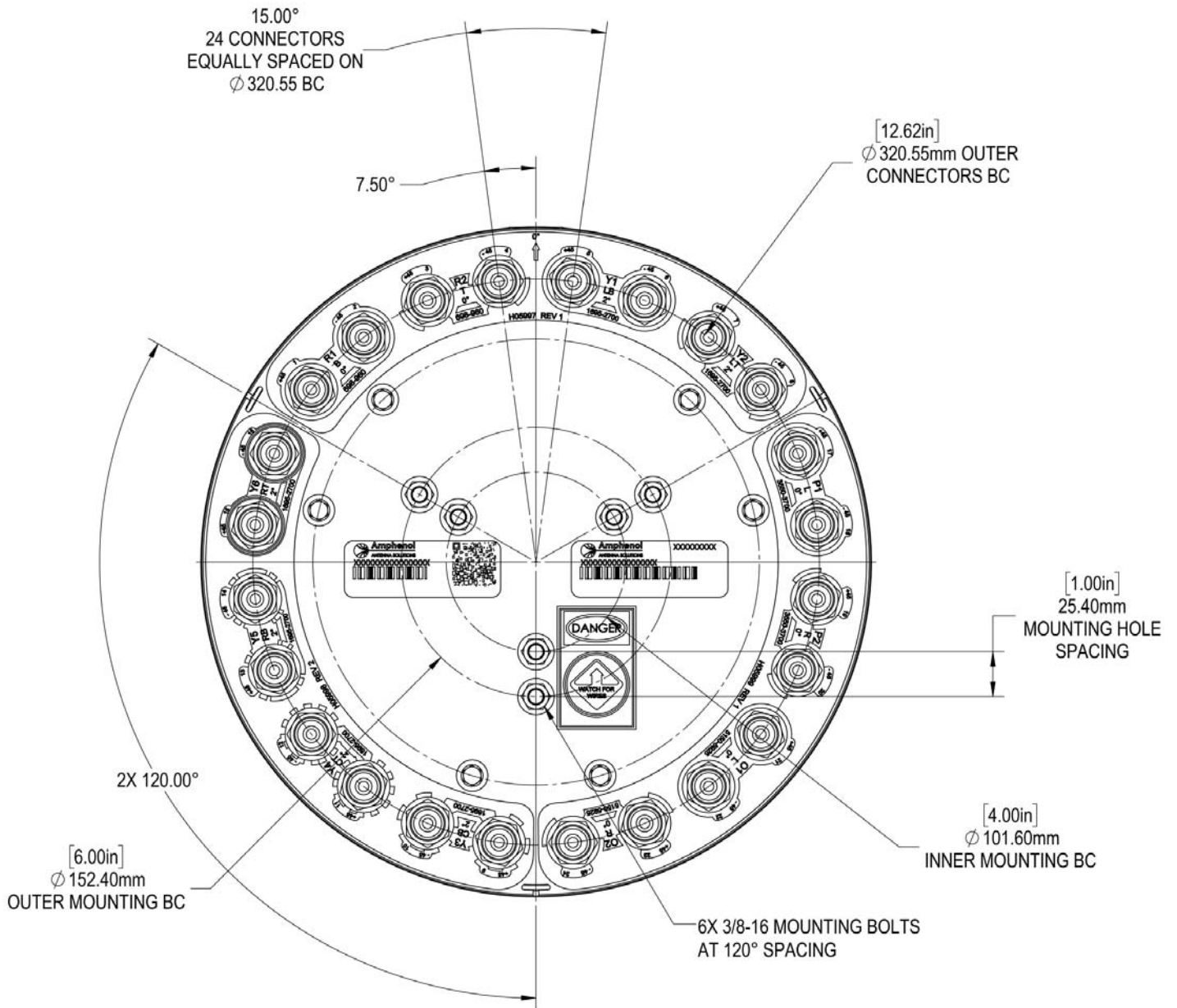
Antenna	Height	mm (in)	1219 (48.0)
	Diameter	mm (in)	371 (14.6)
Net Weight - Antenna Only		kg (lbs)	19.1 (42.0)
Windload	Calculation	km/h (mph)	160 (100)
	Frontal	N (lbf)	391 (88)
Survival Wind Speed		km/h (mph)	241 (150)
Wind Area		m ² (ft ²)	0.47 (5.0)
Volume		m ³ (ft ³)	0.13 (4.7) Total (2x 0.065 (2.33))
Connector	Type	---	4.3-10 Female
	Quantity	---	24
	Position	---	Bottom
Radome Color		---	Grey (Pantone 420 C), Brown (Pantone 476 C), Black (RAL 9011)
Lightning Protection (Grounding Type)		---	Direct Ground



Quoted performance parameters are provided to offer typical, peak or range values only and may vary as a result of normal testing, manufacturing and operational conditions. Extreme operational conditions and/or stress on structural supports is beyond our control. Such conditions may result in damage to this product. Improvements to products may be made without notice.

2C6U4MT360X12Fwxys2

BOTTOM VIEW - CONNECTOR DIAGRAM



INSTALLATION Please read all installation notes before installing this product.







Always attach the antenna using all mounting points.

Do not install the antenna with the connectors facing upwards.

Quoted performance parameters are provided to offer typical, peak or range values only and may vary as a result of normal testing, manufacturing and operational conditions. Extreme operational conditions and/or stress on structural supports is beyond our control. Such conditions may result in damage to this product. Improvements to products may be made without notice.

2C6U4MT360X12Fwxys2

ACCESSORIES All accessories are ordered separately unless otherwise indicated

MODEL NUMBER	DESCRIPTION
 CWT-MKS-SIDE	Side mounting bracket kit for canister antenna
 CWT-MKS-TOP	Top mounting bracket kit for canister antenna
 WB3X-MKS-01	Utility pole mounting bracket kit for canister antenna
 CWT-MKS-BASE-xx	Wide diameter pole top mounting bracket kit for canister antenna

ORDERING OPTIONS Select from the following ordering options

SELECT RADOME COLOR	SELECT DEGREE OF ELECTRICAL DOWNTILT FOR EACH BAND				ORDERING MODEL NUMBER
	LOW BAND	MID BAND	CBRS BAND	LAA BAND	
Grey Pantone 420 C	0°	2°	0°	0°	2C6U4MT360X12F020s2
	0°	4°	0°	0°	2C6U4MT360X12F040s2
	0°	6°	0°	0°	2C6U4MT360X12F060s2
Brown Pantone 476 C	0°	2°	0°	0°	2C6U4MT360X12F020s2BR
	0°	4°	0°	0°	2C6U4MT360X12F040s2BR
	0°	6°	0°	0°	2C6U4MT360X12F060s2BR
Black RAL 9011	0°	2°	0°	0°	2C6U4MT360X12F020s2BK
	0°	4°	0°	0°	2C6U4MT360X12F040s2BK
	0°	6°	0°	0°	2C6U4MT360X12F060s2BK

Quoted performance parameters are provided to offer typical, peak or range values only and may vary as a result of normal testing, manufacturing and operational conditions. Extreme operational conditions and/or stress on structural supports is beyond our control. Such conditions may result in damage to this product. Improvements to products may be made without notice.