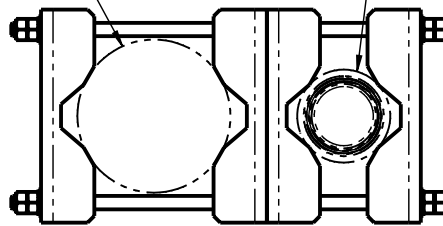


JAYBEAM LTD. Reserve the right to alter or modify dimensions and specifications without notice.

© JAYBEAM LTD. No copying in any form whatsoever without prior permission.

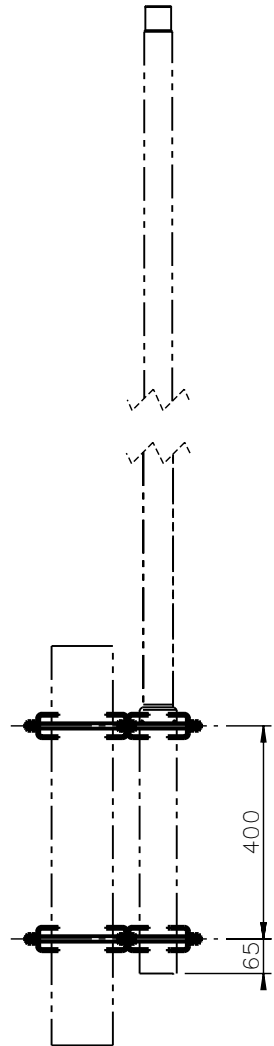
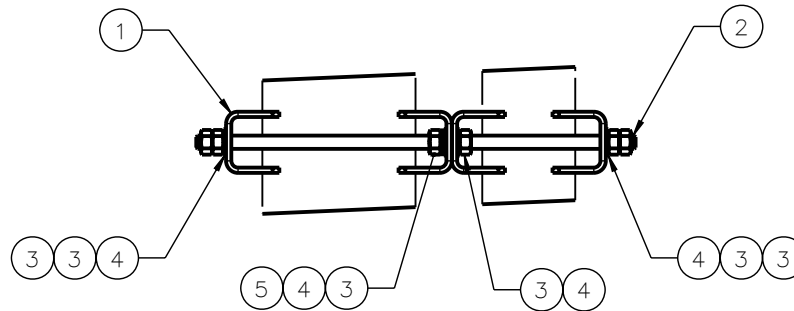
MOUNTING PIPE  
Ø48 - Ø115

ANTENNA



NOTES

1. ALL ITEMS TO BE PACKED IN A PLASTIC BAG, ALONG WITH A COPY OF THIS DRAWING
2. RECOMMENDED TORQUE FOR ALL NUTS = 30Nm




ITEM NO.	PART NO.	DESCRIPTION	DRAWING No.	UNIT	QTY	No OFF	TOT QTY.
1	3902534/68	MOUNTING BRACKET CLAMP	3/9250534	EA	1	8	8
2	6084330-00	M10 x 330MM STUDDING		EA	1	4	4
3	6284700/00	M10 FULL NUT S/S		EA	1	24	24
4	6784600/00	M10 PLAIN WASHER S/S		EA	1	16	16
5	6884100/00	M10 S/COIL SPRING WASHER SS		EA	1	4	4

U.O.S. Screw Threads to be ISO METRIC,  
COARSE PITCH, MEDIUM CLASS to BS 3643 Part 2

U.O.S. Hole Tolerance to ISO 286 Part 2 H12

REV.	DESCRIPTION	DATE	DCR
5	ITEM 3 QTY WAS 8 NOW 24 ITEM 6 - 6584500/00 M10 NYLOCK NUT REMOVED	24/12/2008	08-118
4	ITEM 1 WAS 3902534/88 AND ITEM 2 WAS 6084110/00	10/02/2005	8739
<b>REVISIONS</b>			

MATERIAL:		 <b>JAYBEAM LTD.</b> RUTHERFORD DRIVE PARK FARM SOUTH WELLINGBOROUGH NN8 6AX ENGLAND	
FINISH:			
DO NOT SCALE DRAWING	DEBURR AND BREAK SHARP EDGES		
SCALE: 1:10	MODIFICATIONS: FOR LATEST REVISION - SEE TABLE	CHECKED	
UNLESS OTHERWISE SPECIFIED DIMENSIONS ARE IN MILLIMETERS	NAME	DATE	FIRST USED ON: 7549
TOLERANCES: UNLESS OTHERWISE STATED	DRAWN	DATE	TITLE:
0 ±0.5	A BILNEY	10/02/05	<b>MOUNTING ASSEMBLY (7549)</b>
0.0 ±0.25	CHK'D	15/02/05	
0.00 ±0.1	A PHARAOH		DWG NO.
0.000 ±0.05			<b>9251638</b>
ANGULAR: ±0.5	<b>A3</b>	PART No:	<b>5</b>
	SHEET 1 OF 1	<b>0900638/00</b>	ISSUE: