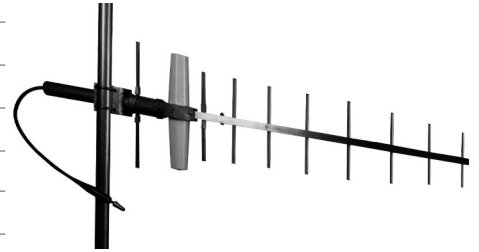


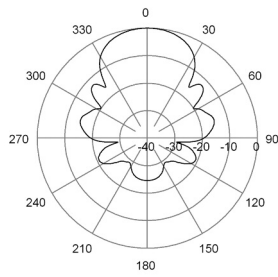
A 10-Element UHF Yagi antenna for PMR/Trunked Radio/TETRA networks. The driven element for this design is enclosed in a weather resistant plastic shroud to provide consistent, reliable performance in all weather conditions.

MA421RS06

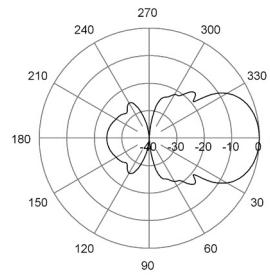
V-Pol | 10-Element Shrouded Yagi | 45° | 10.0 dBd



Electrical Characteristics	
Frequency band	440-470 MHz
Polarization	Vertical
Horizontal beamwidth	45°
Vertical beamwidth	39°
Gain	10.0 dBd
Impedance	50Ω
VSWR	<1.5:1
Front-to-back ratio	>20 dB
Maximum power	250 W
Connector type	N-Female + 0.65 coaxial cable
Lightning protection	DC grounded
Mechanical Characteristics	
Materials	Boom, 45 mm dia., aluminium Elements, 14 mm dia., aluminium Balun, enclosed in polyethylene shroud
Dimensions (Length)	1700 mm 66.9 in
Weight without bracket	7.0 kg 15.4 lbs
Wind load @ 160 km/hr (100 mph)	200 N 45.0 lbf
Mounting Options	
Mounting bracket	MA621AZ51



Horizontal



Vertical

Quoted performance parameters are provided to offer typical or range values only and may vary as a result of normal manufacturing and operational conditions. Extreme operational conditions and/or stress on structural supports is beyond our control. Such conditions may result in damage to this product. Improvements to product may be made without notice.