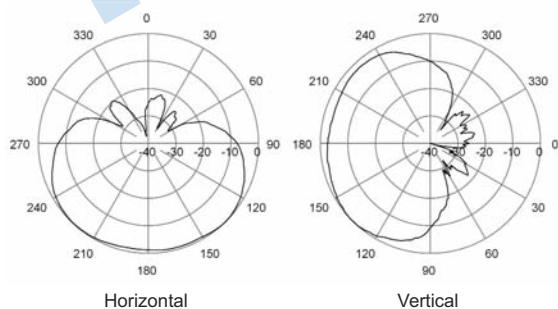
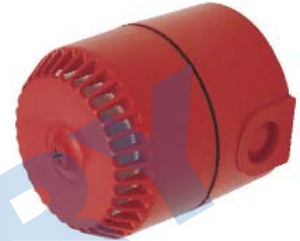


5073xxx

Replace 'xxx' with desired model number option.

X-Pol | Disguised Antenna | 120° | 6.0 dBi

Electrical Characteristics	
Frequency band	2500-2700 MHz
Model number options (xxx)	5073101 - Red unit 5073102 - White unit
Polarization	±45°
Horizontal beamwidth (-3 dB)	120° (±10°)
Vertical beamwidth (-3 dB)	120° (±10°)
Gain	3.9 dBd (6.0 dBi)
VSWR	<1.5:1 max
Isolation	>25 dB
Front-to-back ratio	20 dB
Cross-pol discrimination	>15 dB (essential for mimo)
Input power	50 W per port
Connector(s)	2 Ports / N-Socket + 0.5m RG303 (white)
Mechanical Characteristics	
Shroud	Red / White resistant plastic TBC
Dimensions Depth x Diameter	148 x 93 mm 5.8 x 3.7 in
Weight	0.25 kg 0.6 lbs
Wind load @ 161 km/hr (100 mph)	25 N 5.6 lbf
Packaging	
Packing dimensions	150 x 150 x 30 mm 5.9 x 5.9 x 1.1 in
Packing weight	0.50 kg 1.1 lbs
Mounting Options	
Mounting	Integrated bracket for wall mounting



Quoted performance parameters are provided to offer typical or range values only and may vary as a result of normal manufacturing and operational conditions. Extreme operational conditions and/or stress on structural supports is beyond our control. Such conditions may result in damage to this product. Improvements to product may be made without notice.