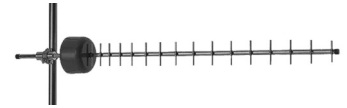


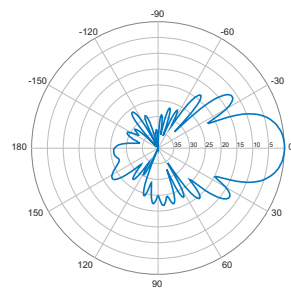
7132860

V-Pol | Yagi | 27° | 16.7 dBi

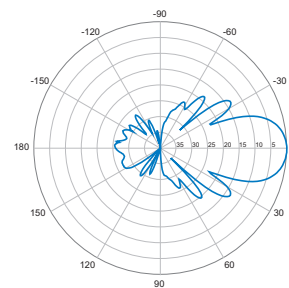
Electrical Characteristics	
Frequency band	824-896 MHz
Polarization	Vertical
Horizontal beamwidth	27°
Vertical beamwidth	25°
Gain	14.6 dBd / 16.7 dBi
VSWR	<1.35:1
Front-to-back ratio	>20 dB
Input power	150 W
Connector type / Location	N-Female / Rear of Shroud
Mechanical Characteristics	
Dimensions (Length)	2200 mm 86.6 in
Weight without bracket	4.0 kg 8.8 lbs
Survival wind speed	200 km/hr 125 mph
Wind load @ 160 km/hr (100 mph)	200 N 45 lbf
Mounting Options	
Mounting bracket	Part Number 99284 + U-bolts to match mounting pipe diameter Available U-bolts: UB03 (2-inch), UB06 (3-inch), UB07 (4-inch)



Please order Mounting Bracket separately.



Horizontal



Vertical

Quoted performance parameters are provided to offer typical or range values only and may vary as a result of normal manufacturing and operational conditions. Extreme operational conditions and/or stress on structural supports is beyond our control. Such conditions may result in damage to this product. Improvements to product may be made without notice.