

## Overview

These instructions describe how to fit a RETU-Ex01 (RET) to an Amphenol Antenna Solutions SmartTilt antenna with remote adjustable electrical tilt.

Typically, the RET unit is installed at the factory and further install work or adjustment isn't necessary. However, it can be retrofitted to a manually adjustable electrical tilt antenna that has already been installed, or is at a warehouse.

**NOTE** The entire installation process should take place **ON THE GROUND**, in order to minimize the need for an expensive and time consuming tower climb!

## Check the Parts

Amphenol Antenna Solutions part number RETU-Ex01 Contains:

- RET unit (replace x with):
  - B = AISG 1.1
  - G = AISG 2.0 / 3GPP
  - E = Ericsson Mode
- Caps for male AISG type connectors
- Caps for female AISG type connectors
- Four machine screws



## Check Cables

Make sure you have the **correct** AISG jumper cables to interconnect the RET to the PCU-4 (or alternate) controller.

Each cable has a male connector on one end and a female on the other.

The **male** connector plugs into the **PCU-4**, and the **female** to the **RET unit**.



## Set Antenna to Minimum Tilt

1. Rotate knob clockwise  $\frac{1}{2}$  degree beyond the minimum tilt value on the indicator gauge.
2. Rotate knob counter-clockwise until the minimum tilt setting is achieved.

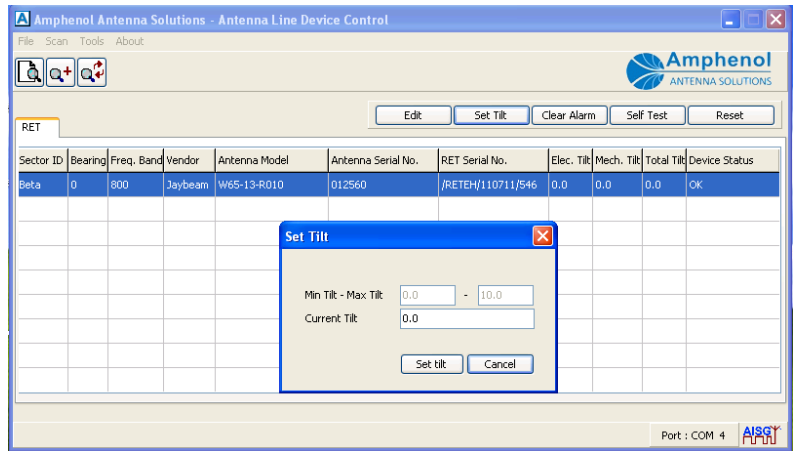


## Set RET Unit to Minimum Tilt

Follow instructions provided with Antenna Line Device (ALD) control software to set RET motor to the minimum tilt setting for that model.

**NOTE** This step requires a laptop computer with ALD control software and a PCU-4 Portable Control Kit.

**NOTE** Verify that the antenna model shown in the "Antenna Model" column is correct. If not, the RET will need to be re-configured before proceeding.



## Attach RET Unit to Antenna

Attach using the (4) self-locking M6 screws provided. (M10 wrench required)

**NOTE** Tighten the screws until the RET Unit flange is secure. **DO NOT** over-tighten.

## Test and Record Data

1. Using ALD control software, drive the antenna to max tilt to verify operation over the full range of actuator travel.
2. Program the RET Unit with the Sector ID where this unit will be installed, along with any other desired user information.
3. Record the RET Unit unique ID number + the antenna serial number on the site configuration log.



## Amphenol Antenna Solutions

1300 Capital Drive

Rockford, Illinois 61109 USA

+1 815.399.0001

[www.amphenol-antennas.com](http://www.amphenol-antennas.com)