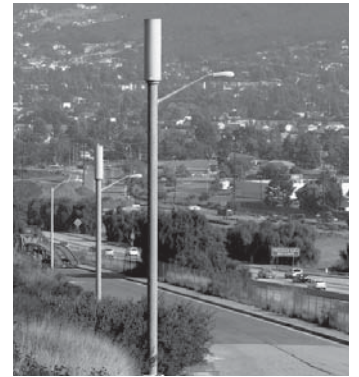


UNX20-xx

20-inch Diameter Antenna Enclosure

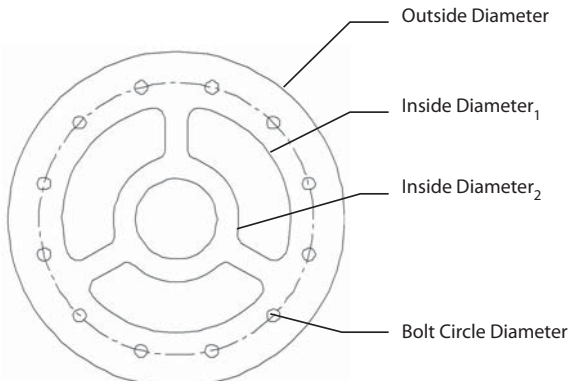
- 3-sectors inside cylindrical enclosure
- Accommodates a wide variety of antennas
- Stackable to satisfy co-location requirements
- Removable radome segments for easy field access



| Mechanical Characteristics | | | | | | | |
|----------------------------------|--|-----------|----------|-----------|----------|-----------|---------|
| UNICELL Model Number (xx) | UNX20-14 | | UNX20-19 | | UNX20-25 | | |
| Diameter of Radome | 511 mm | 20.1 in | 511 mm | 20.1 in | 511 mm | 20.1 in | |
| Height | 1829 mm | 72.0 in | 2438 mm | 96.0 in | 2743 mm | 108.0 in | |
| Weight (excluding antennas) | 80.3 kg | 177 lbs | 90.0 kg | 198 lbs | 100.7 kg | 222 lbs | |
| Antennas Accommodated | Refer to individual antenna datasheets | | | | | | |
| Stackable | Yes | | Yes | | Yes | | |
| Wind Load (160 km/hr or 100 mph) | 463 N | 104 lbf | 606 N | 136 lbf | 770 N | 173 lbf | |
| Survival Wind Speed | Single Model | 241 km/hr | 150 mph | 241 km/hr | 150 mph | 241 km/hr | 150 mph |
| | Stacked Models | 201 km/hr | 125 mph | 160 km/hr | 100 mph | 137 km/hr | 85 mph |

| Electrical Characteristics | |
|--|-------------|
| Gain Loss Through Radome | < 0.3 dB |
| VSWR | < 1.4:1 Max |
| Port to Port Isolation | > 28 dB |
| Sector to Sector Isolation | > 45 dB |
| Front To Back Ratio | > 25 dB |
| Refer to individual antenna datasheets for all other electrical specifications | |

| Accessories | Part Number | Description |
|--------------------------|-------------|--|
| Mounting Mast | UNX20-M-120 | Mounting mast, 120 in x 20 in diameter |
| Cable Access Canister | UNX20-C | 20-inch UNICELL Canister |
| Lightning Protection Kit | UNX-LPK | Copper air finial with 6m (20 ft) cable attached |

| UNICELL Flange Interface | |
|---|--|
|  | OD: 520.7 mm 20.50 in |
| | ID₁: 393.7 mm 15.50 in |
| | ID₂: 179.1 mm 7.05 in |
| | BCD: 12 x 13.5 mm (0.53 in) diameter on 457.2 mm (18.0 in) diameter bolt circle |

Quoted performance parameters are provided to offer typical, peak or range values only and may vary as a result of normal testing, manufacturing and operational conditions. Extreme operational conditions and/or stress on structural supports is beyond our control. Such conditions may result in damage to this product. Improvements to products may be made without notice.