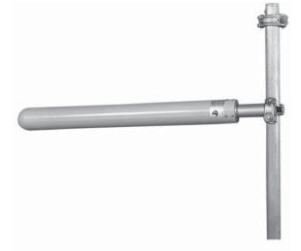


7360012

Single Band | Shrouded Yagi | V / H-Pol | 26° | 17.0 dBi

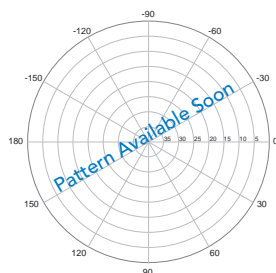
- Shrouded Yagi antenna for Links in the 2.3-2.5 GHz band
- All elements enclosed in a weather resistant, glassfibre shroud
- Able to provide consistent, reliable performance in all weather conditions



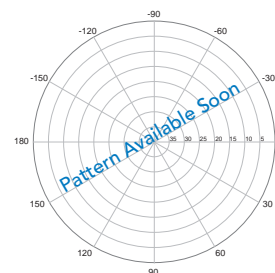
Electrical Characteristics	
Frequency Band	2300-2500 MHz
Polarization	Vertical or Horizontal
Horizontal Beamwidth	26°
Vertical Beamwidth	24°
Gain	17.0 dBi
Impedance	50Ω
VSWR	< 1.5:1
Front-to-Back Ratio	> 20 dB
Power Rating	100 W
Lightning Protection	DC Grounded
Connector(s)	N-Female

Mechanical Characteristics			
Materials	Shroud	GRP	
	Radiating Assembly	Brass	
	Mounting Section (diameter)	Aluminum	
50 mm		1.9 in	
Dimensions (Length)	1000 mm	39.4 in	
Weight without Mounting Bracket	1.7 kg	3.7 lbs	
Wind Load (160 km/hr or 100 mph)	91 N	20.5 lbf	
Mounting Options		Part Number	
Mounting brackets are ordered separately.			
Mounting Bracket	3202078/68		
Alternate Mounting Bracket	0300064/00 + U-bolts to match mounting pipe diameter		

2300-2500 MHz



Horizontal



Vertical

Quoted performance parameters are provided to offer typical or range values only and may vary as a result of normal manufacturing and operational conditions. Extreme operational conditions and/or stress on structural supports is beyond our control. Such conditions may result in damage to this product. Improvements to product may be made without notice.